

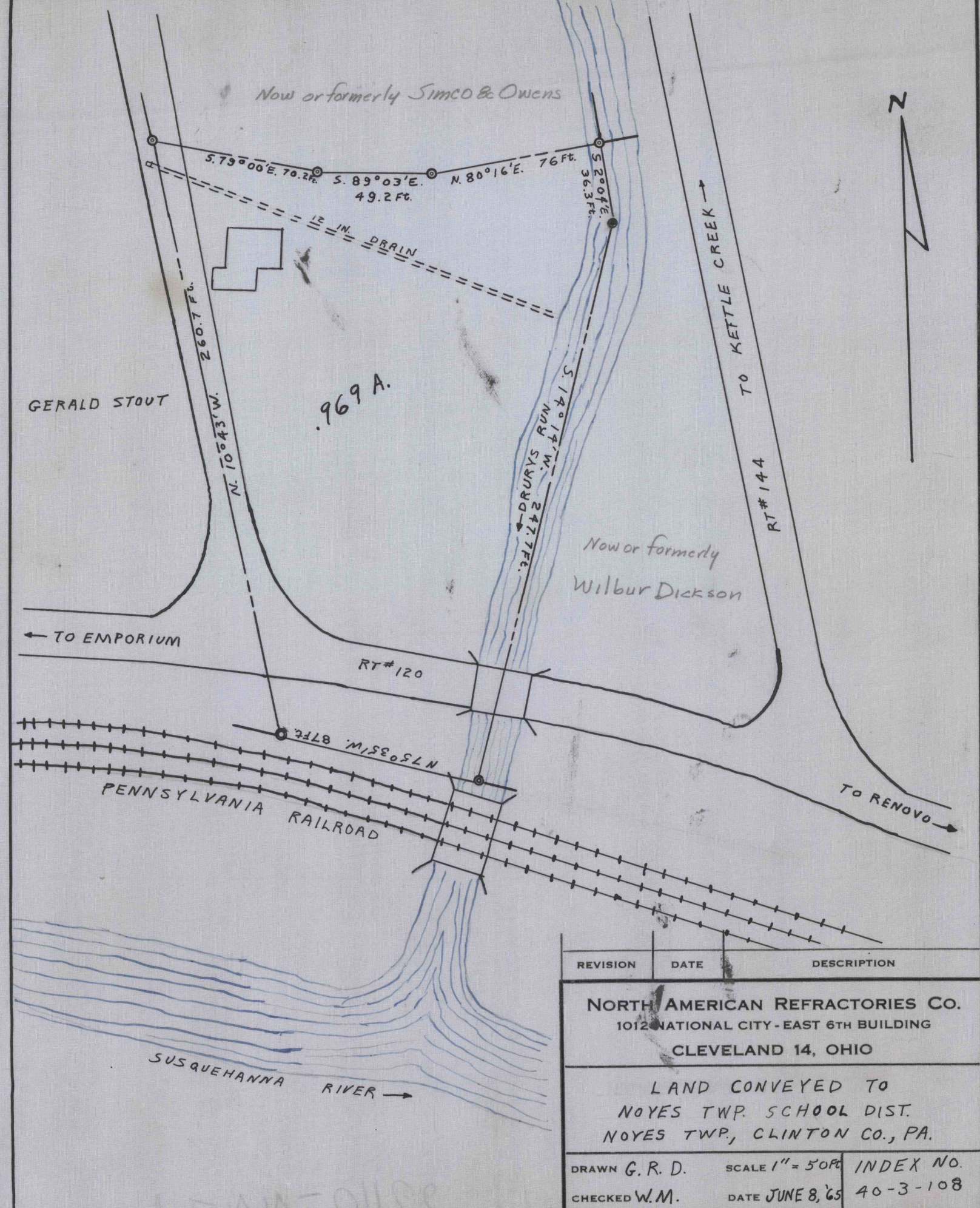
Now or formerly Simco & Owens



GERALD STOUT

969 A.

Now or formerly
Wilbur Dickson



REVISION	DATE	DESCRIPTION
NORTH AMERICAN REFRACTORIES CO. 1012 NATIONAL CITY - EAST 6TH BUILDING CLEVELAND 14, OHIO		
LAND CONVEYED TO NOYES TWP. SCHOOL DIST. NOYES TWP., CLINTON CO., PA.		
DRAWN G. R. D.	SCALE 1" = 50 FT.	INDEX NO.
CHECKED W. M.	DATE JUNE 8, '65	40-3-108