

NORTH AMERICAN REFRACTORIES CO.

1012 NATIONAL CITY—EAST 6TH BUILDING
CLEVELAND 14, OHIO

ENV. No.

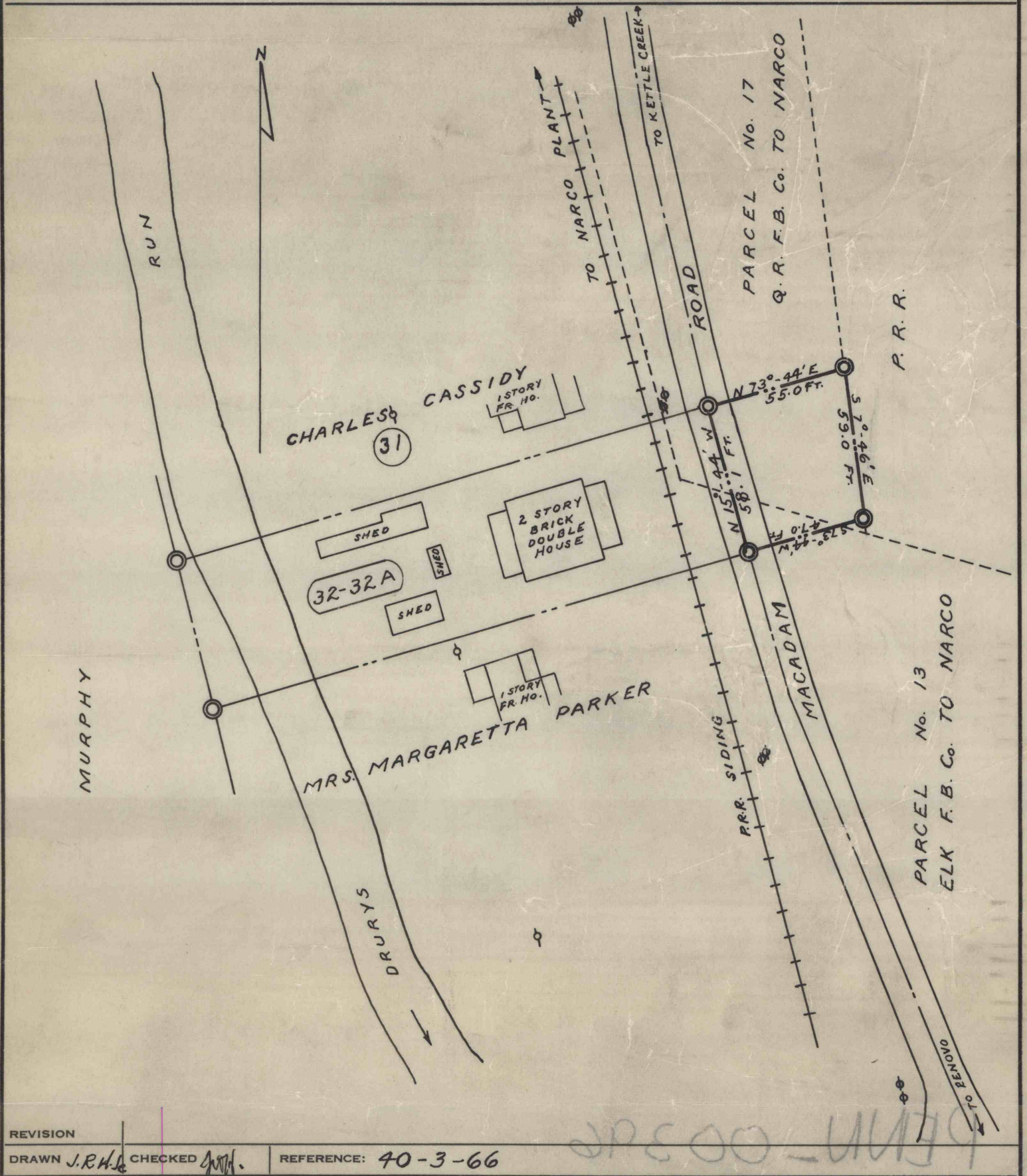
SHEET No.

40-3-102

Land Requested by Wm H. Haas
Drury's Run

SCALE 1" = 50 FT.

DATE 12/31/54



REVISION

DRAWN J.R.H.

CHECKED [Signature]

REFERENCE: 40-3-66