

REFERENCE DATA

CRESCENT REFRACTORIES CO.

CURWENSVILLE, CLEARFIELD COUNTY, PA.

ENGINEERING DEPARTMENT

PROPERTY OF JOHN PORTER EST.

SHOWING RESERVATION

ENV. No. LT

SHEET No. 135

50-3-320

DATE 10-1-19

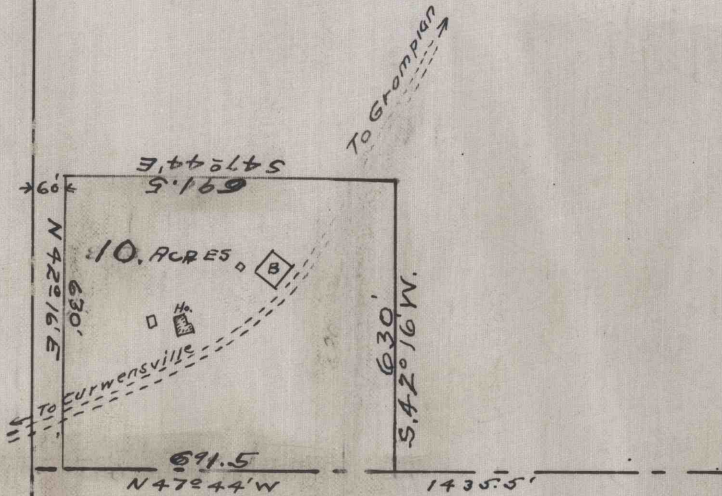
SCALE 1" = 400'

M. CASSIDY

CLARK NORRIS EST.

JOHN PORTER EST.

57.22 ACRES

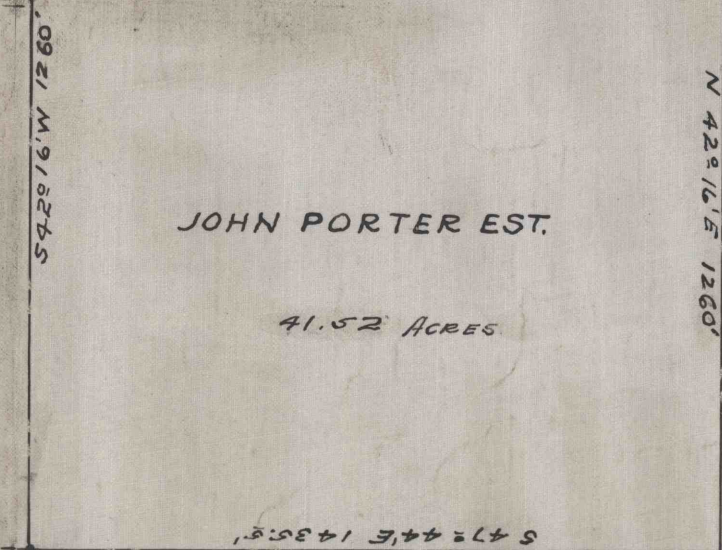
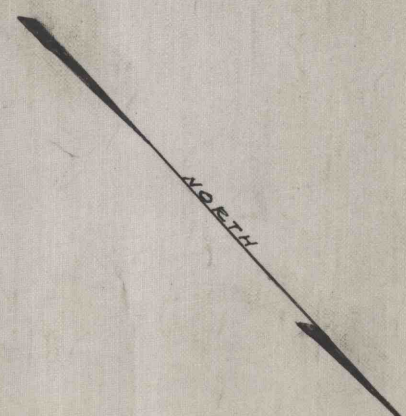


I. B. NORRIS

GEO. MCCLURE

JOHN PORTER EST.

41.52 ACRES



I. B. NORRIS