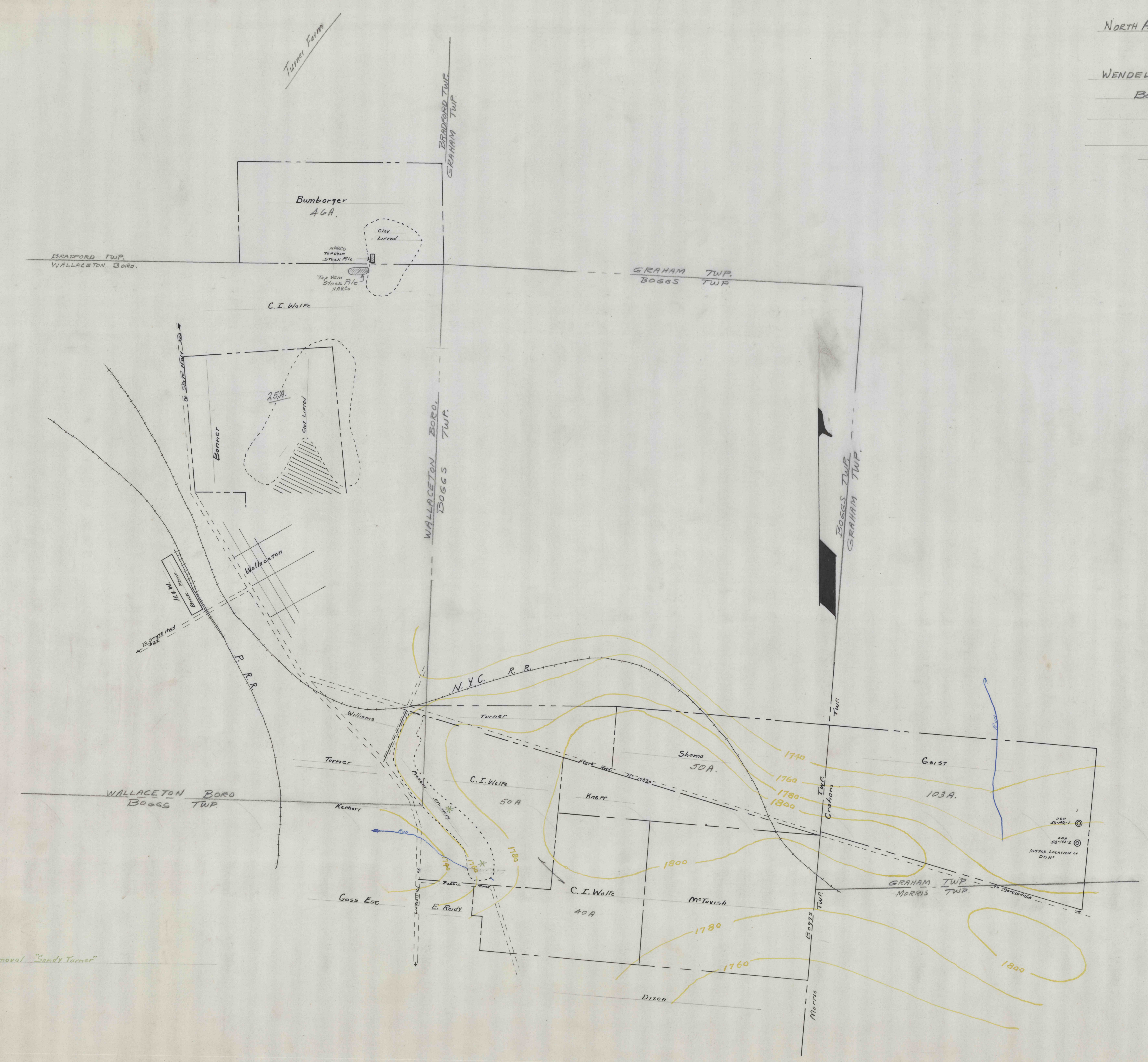


NORTH AMERICAN REFRACTORIES CO.  
 CLEVELAND 14, OHIO  
 MAP SHOWING LOCATION  
 OF  
 WENDELL TURNER CLAY PROPERTIES  
 IN  
 Boggs & Graham Twp.  
 Clearfield County, Pa.  
 5/8/56      Approx. 1"=400'  
 Do Not Scale



\*: Location showing Removal "Sandy Turner"