

NORTH AMERICAN REFRACTORIES CO.

1012 NATIONAL CITY BANK BUILDING

CLEVELAND, OHIO

ENV. No.

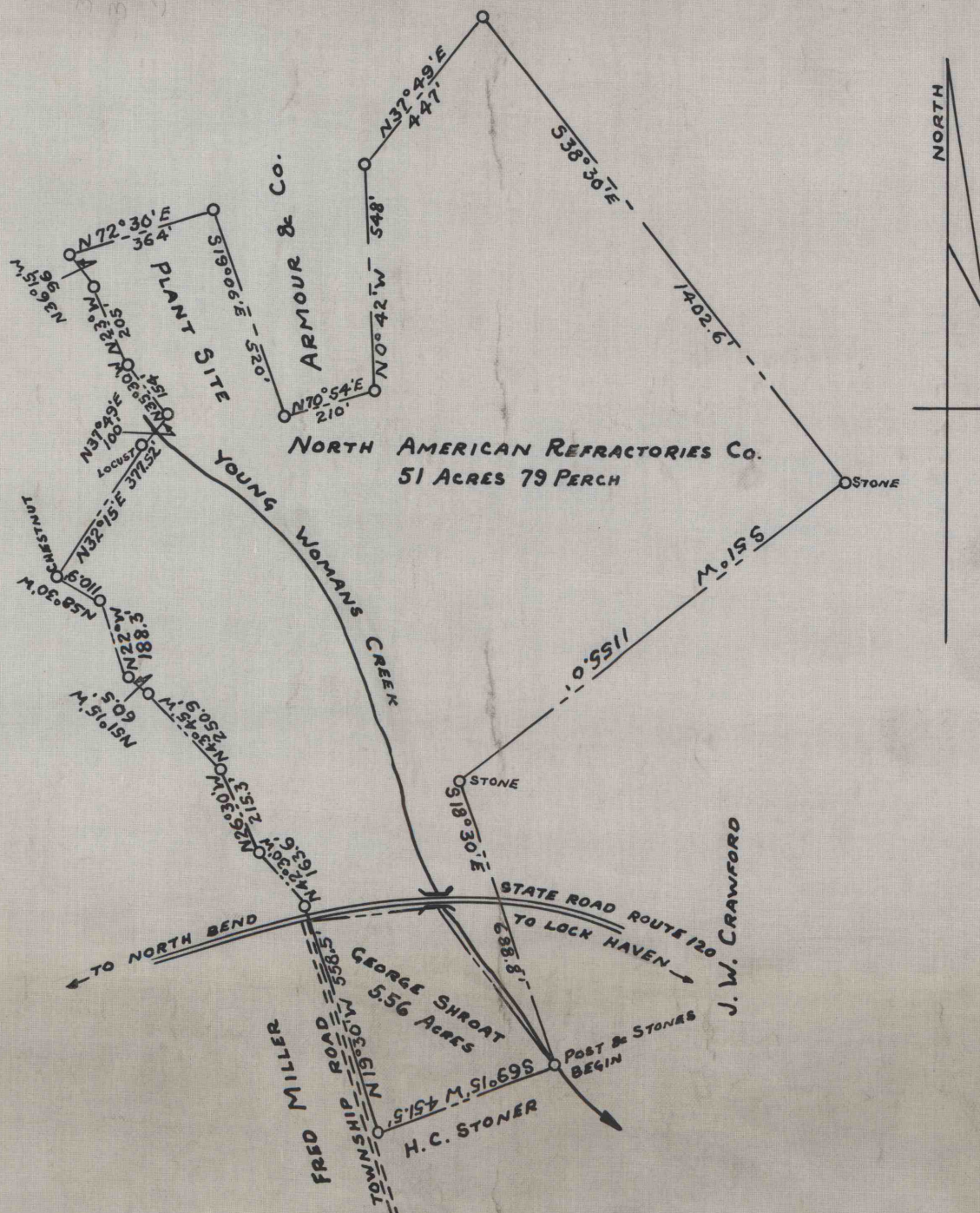
SHEET No.

25-3-32

PROPERTY OF
NORTH AMERICAN REFRACTORIES CO.
LOCATED IN
NORTH BEND, CLINTON COUNTY, PA.

SCALE 1" = 400 FT.

DATE APRIL 29, 1938



NOTE:
REVISION OF 25-3-12

WORKED FROM OUR TRACING 25-3-12

DRAWN BY *EB*

CHECKED BY *[Signature]*