

NORTH AMERICAN REFRACTORIES CO.

MINING DEPT., - RESEARCH CENTER

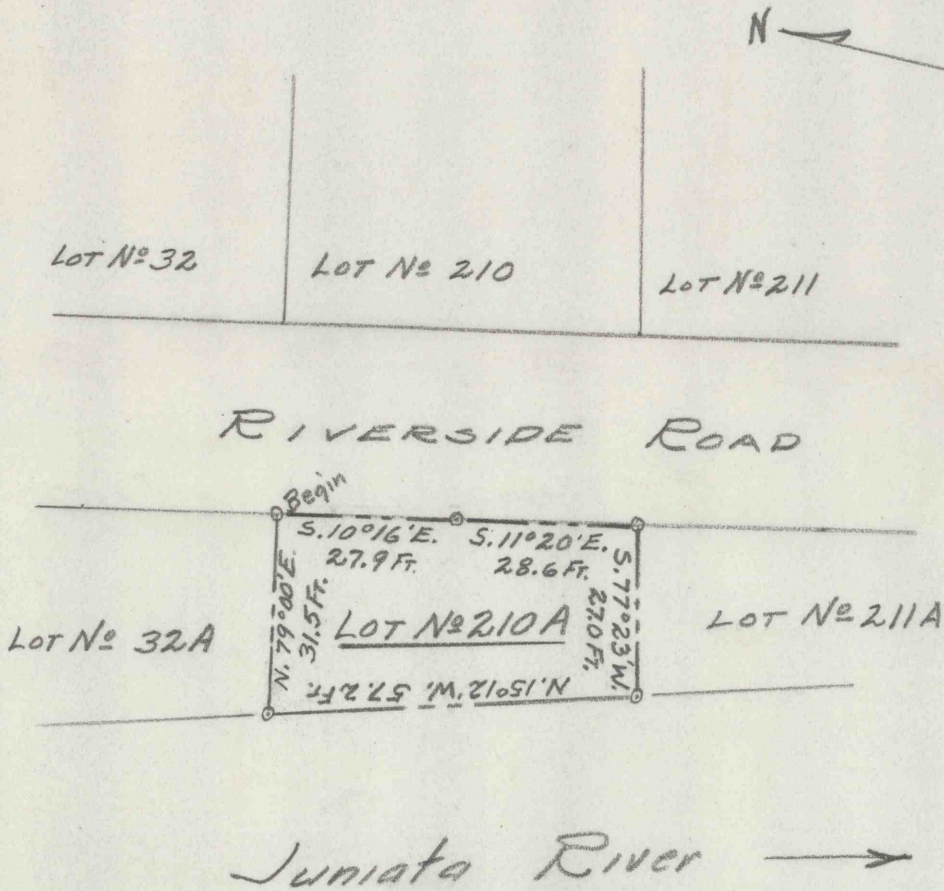
CURWENSVILLE, PA.

SCALE 1" = 30 FT.

DATE March 22, 1968

LOT No 210A

KISTLER BORO. - MIFFLIN CO. - PA.



REVISION

DRAWN WM

CHECKED *[Signature]*

REFERENCE:

60-3-376-50