

NORTH AMERICAN REFRACTORIES CO.

1012 NATIONAL CITY—EAST 6TH BUILDING

CLEVELAND 14, OHIO

ENV. No.

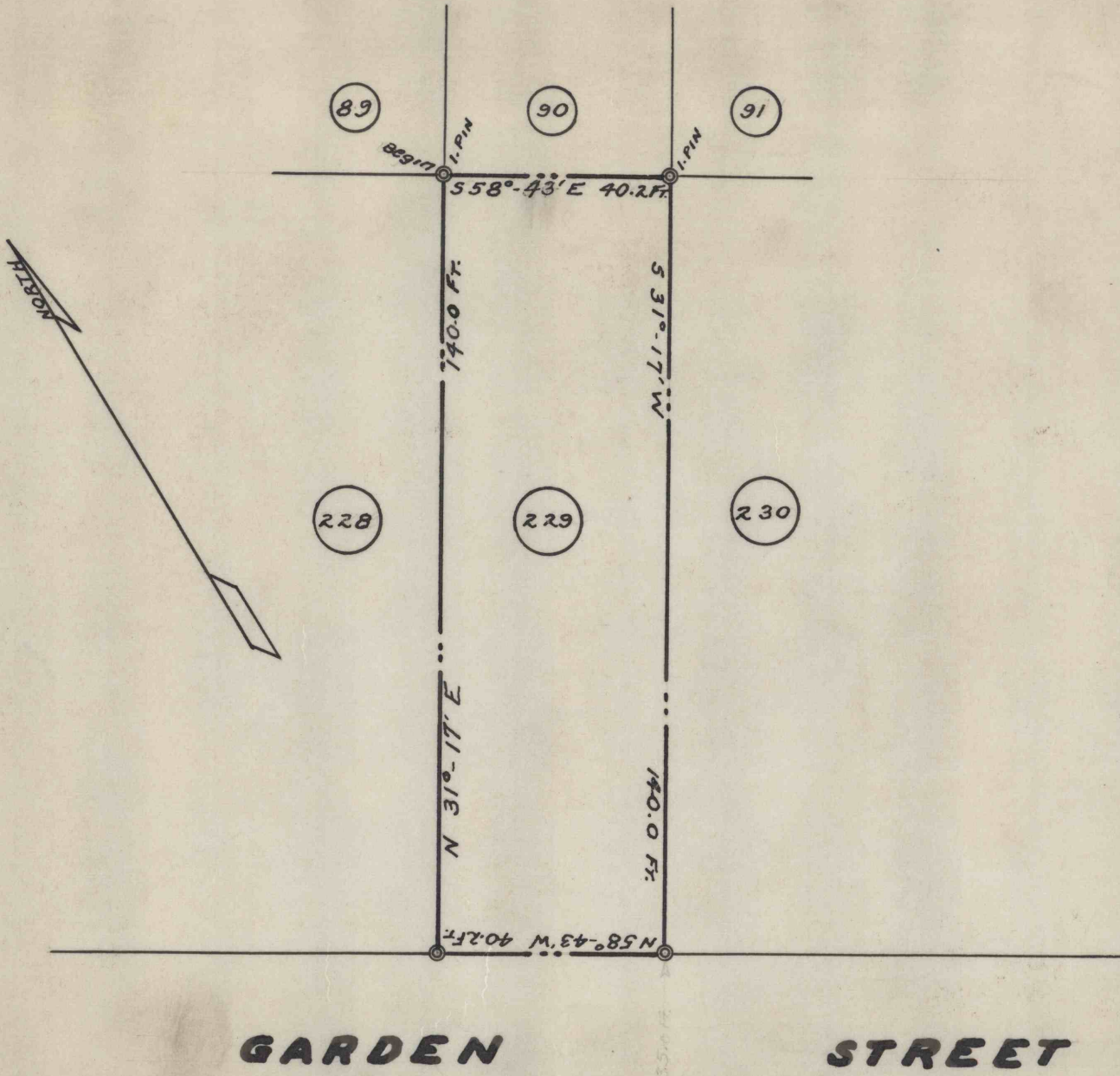
SHEET No.

60-3-290-50

MAP OF LOT No. 229 KISTLER, MIFFLIN CO., PA.

SCALE 1" = 30 Ft.

DATE 11-30-55



REVISION

DRAWN J.R.H., Jr. CHECKED *[Signature]*

REFERENCE:

MAP OF KISTLER BOROUGH - 1" = 50 FT.

60-3-290-50