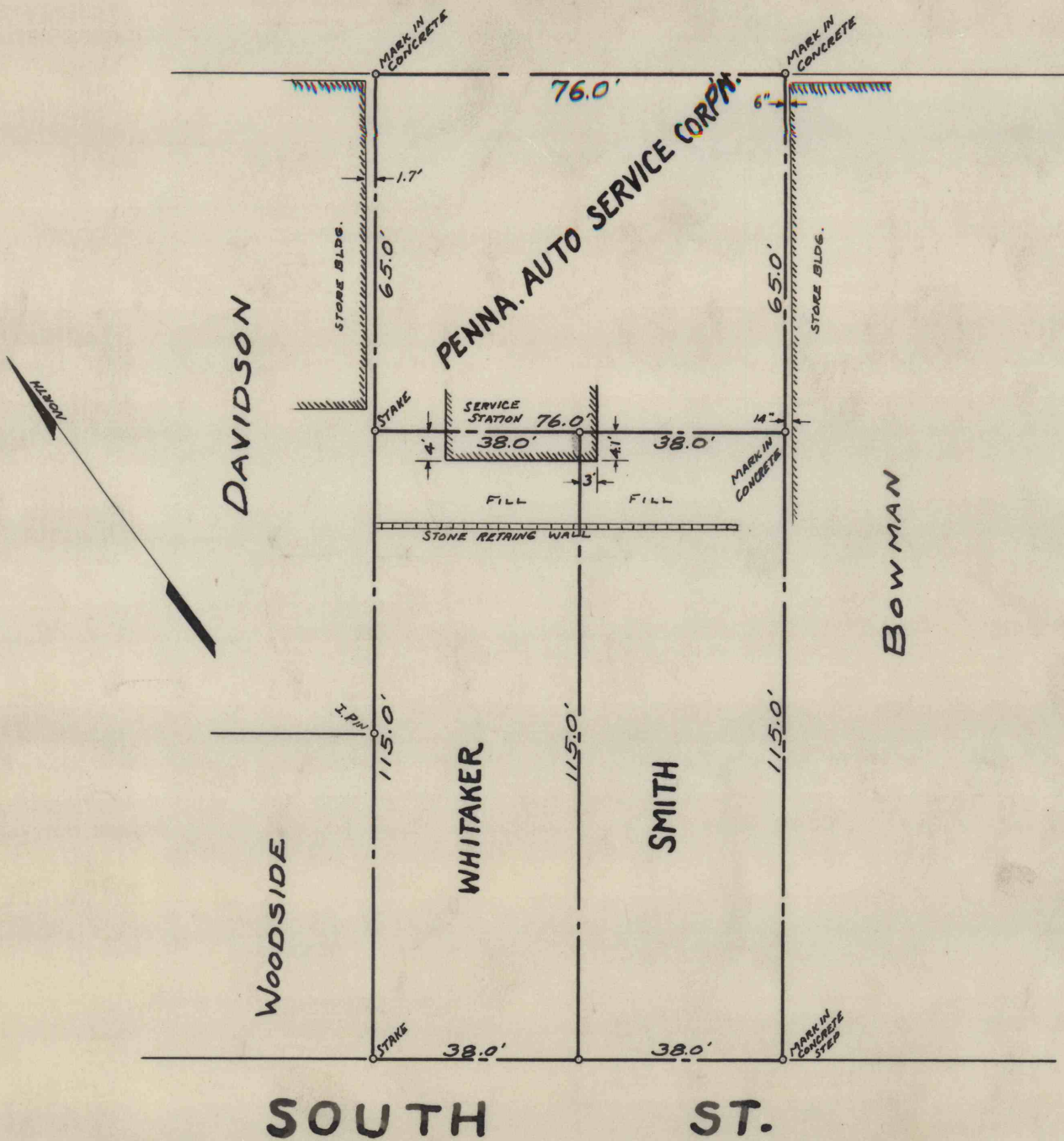


STATE ST.



MAP OF LOTS
 SURVEYED FOR
 MARY EVA SMITH - CHESTER WHITAKER & WIFE
 AND
 PENNA. AUTO SERVICE CORPN.
 CURWENSVILLE BORO. - CLEARFIELD COUNTY - PENNA.
 SURVEYED MAY 30, 1946 - JOHN D. HAINES, JR. - SCALE 1" = 30 FT.

PS 40-6039
 50-3-1134