

NORTH AMERICAN REFRACTORIES CO.

1012 NATIONAL CITY BANK BUILDING

CLEVELAND, OHIO

MAP OF

MARTIN HASSELMAN ESTATE

BENZINGEIR TWP.,

ELK CO.,

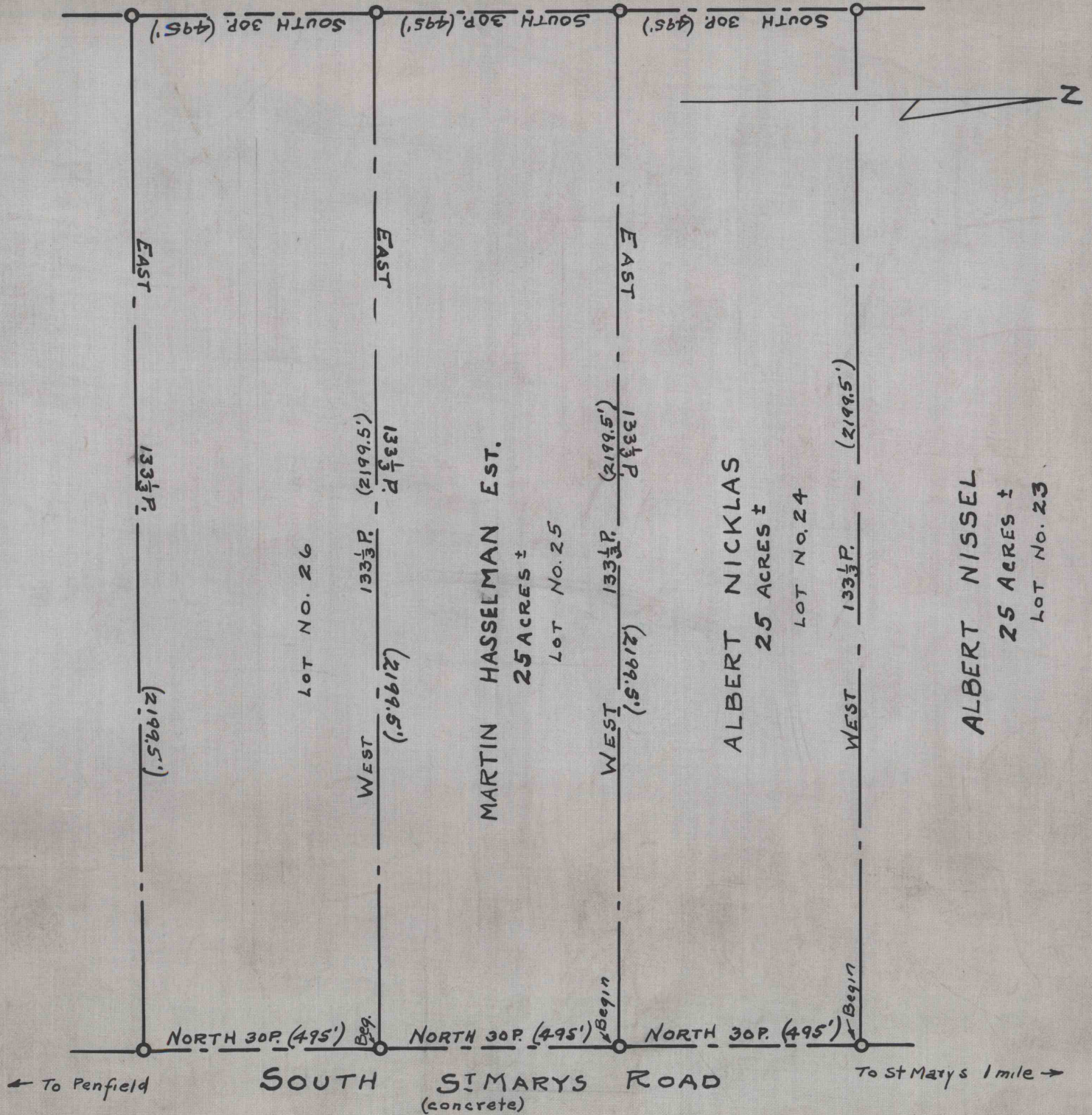
PA.

ENV. No.

SHEET No. 30-3-52

SCALE 1" = 30'

DATE Dec. 17, 1938.



WORKED FROM Deed description

DRAWN BY R.J.F.

CHECKED BY