

"THE JORDAN TRACT"

LAWRENCE TWP. - CLEARFIELD CO. - PA.

REFERENCE DATA

NORTH AMERICAN REFRACTORIES CO.

1012 NATIONAL CITY BANK BUILDING
CLEVELAND, OHIO

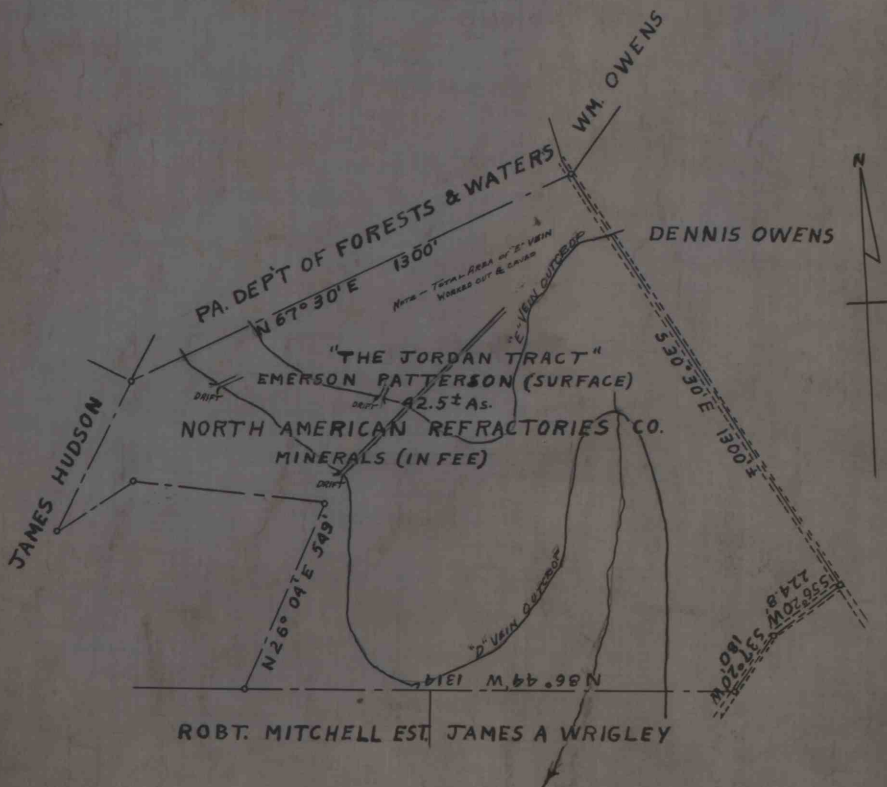
ENV. No.

SHEET No.

45-3-58

SCALE 1"=300'

DATE 6-28-39



WORKED FROM 45-3-56

DRAWN BY R.H.Jr.

CHECKED BY