

REFERENCE DATA

NORTH AMERICAN REFRACTORIES CO.  
1012 NATIONAL CITY BANK BUILDING  
CLEVELAND, OHIO

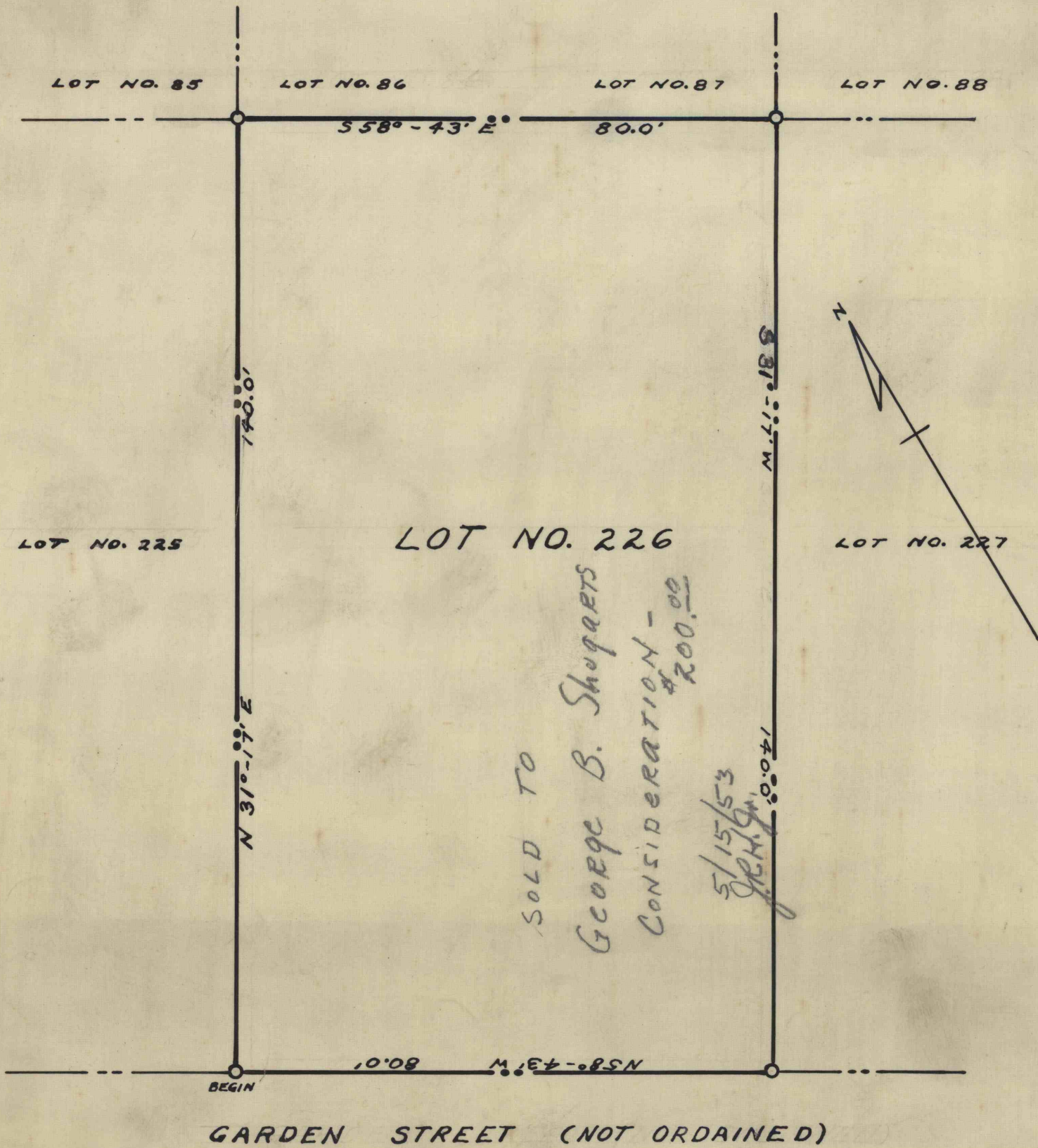
ENV. No.  
SHEET No.

MAP OF LOT NO. 226 IN KISTLER  
BOROUGH, MIFFLIN COUNTY, PA.

60-3-258-50

SCALE 1" = 20'

DATE 7-29-52



60-3-162-50  
WORKED FROM 60-3-166-50  
60-3-190-50

DRAWN BY J.R.H., JR.

CHECKED BY

60-3-258-20