

REFERENCE DATA

NORTH AMERICAN REFRACTORIES CO.

1012 NATIONAL CITY BANK BUILDING
CLEVELAND, OHIO

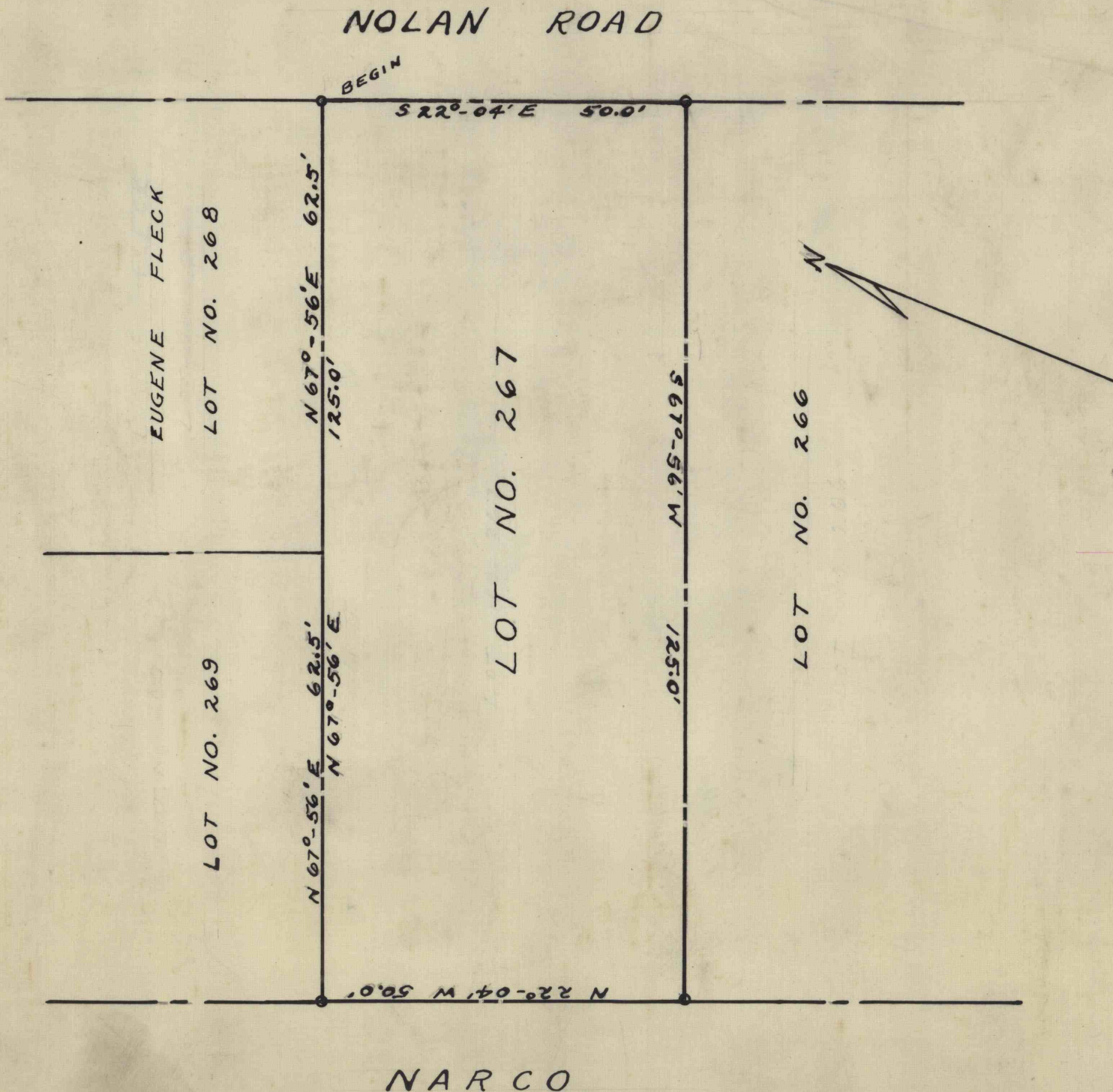
ENV. No.

SHEET No.

60-3-254-50

MAP OF LOT NUMBER 267

SCALE 1" = 20' KISTLER BOROUGH, MIFFLIN CO., PA. DATE 6-10-52



WORKED FROM TRACING No. 60-3-236-50

DRAWN BY *J.R.H.*

CHECKED BY *J.H.K.*