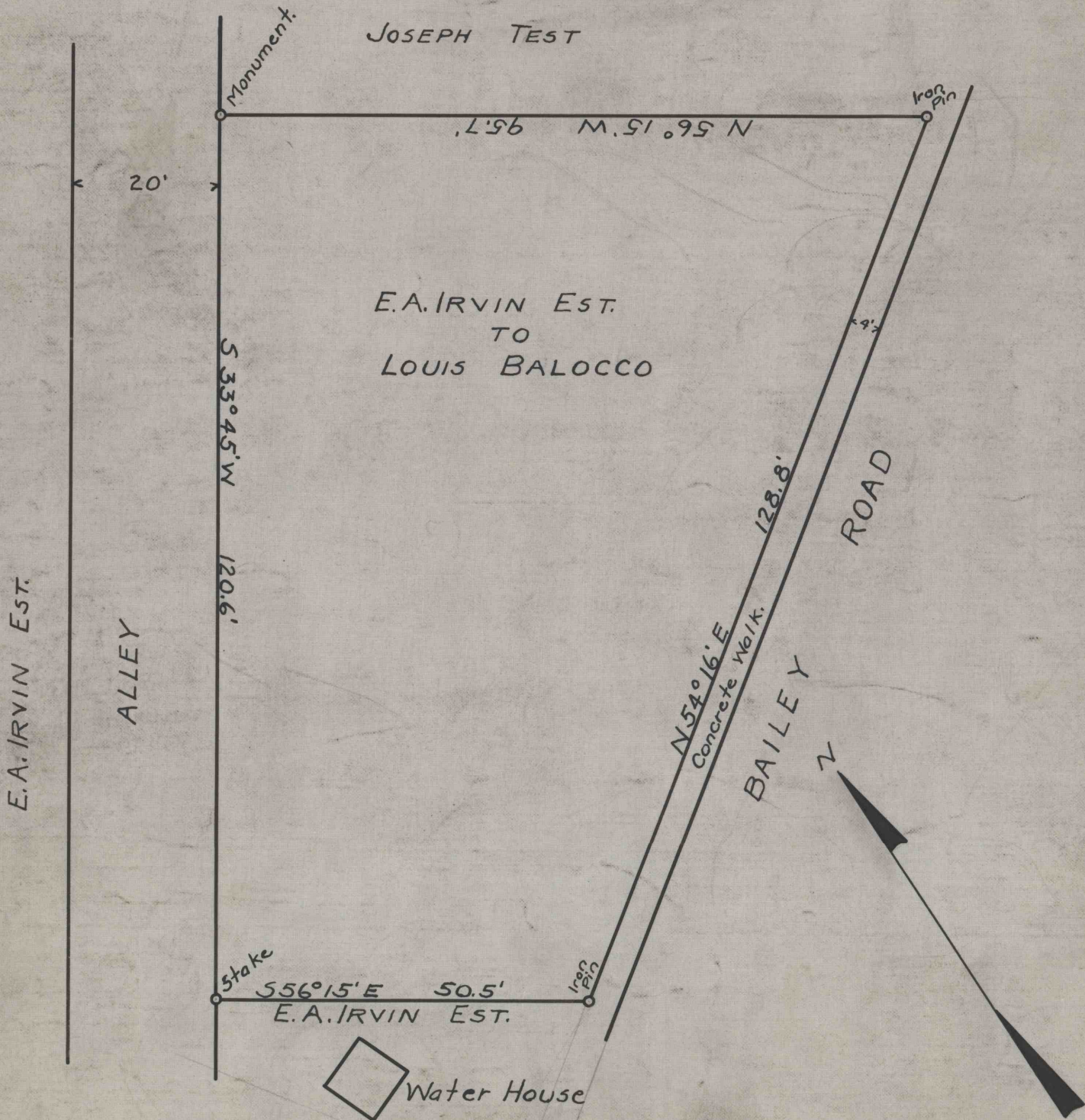


REFERENCE DATA

[REDACTED]
CURWENSVILLE, CLEARFIELD COUNTY, PA.
ENGINEERING DEPARTMENT
PLAT OF LAND IN CURWENSVILLE BORO.
CONVEYED BY
E.A. IRVIN EST. TO LOUIS BALOCCO.

ENV. NO. R2
SHEET NO. 67
50-3460
DATE 4-26-24

SCALE 1" = 20'



WORKED FROM Survey.

DRAWN BY C.M.L.

CHECKED BY C.F.S.