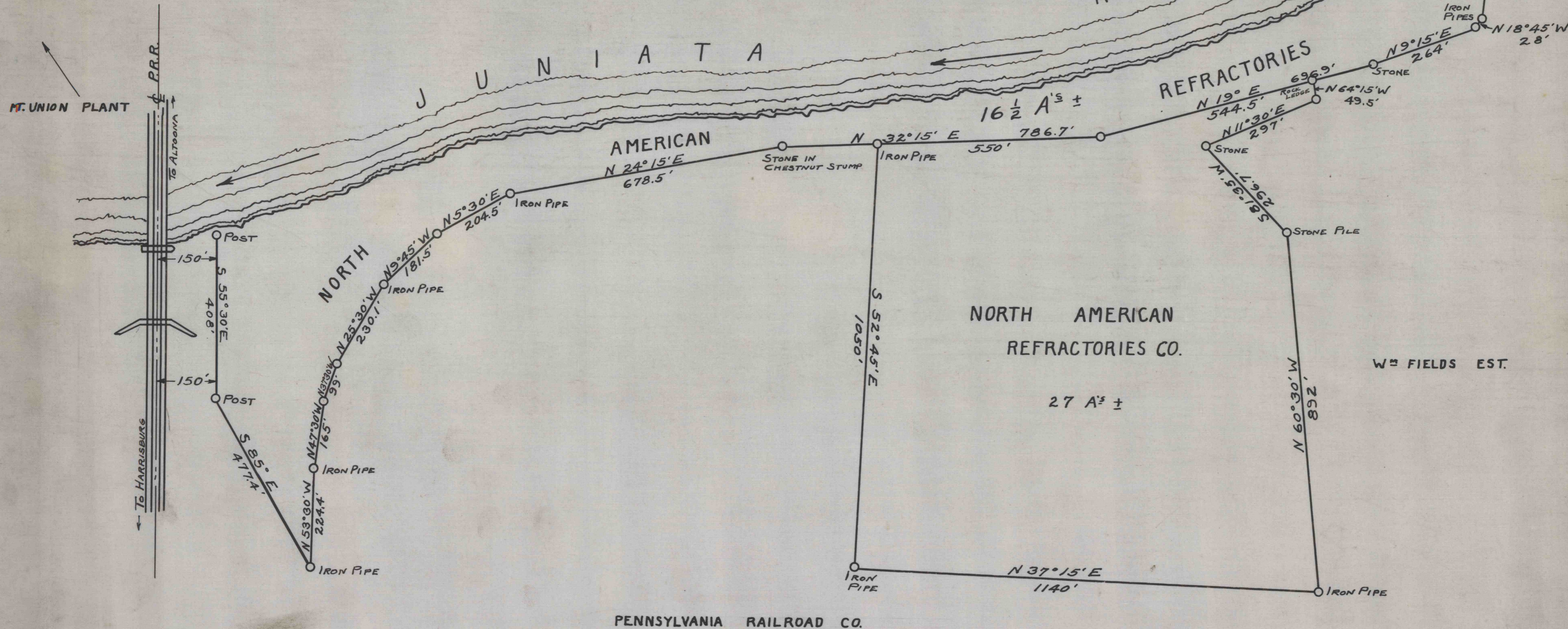
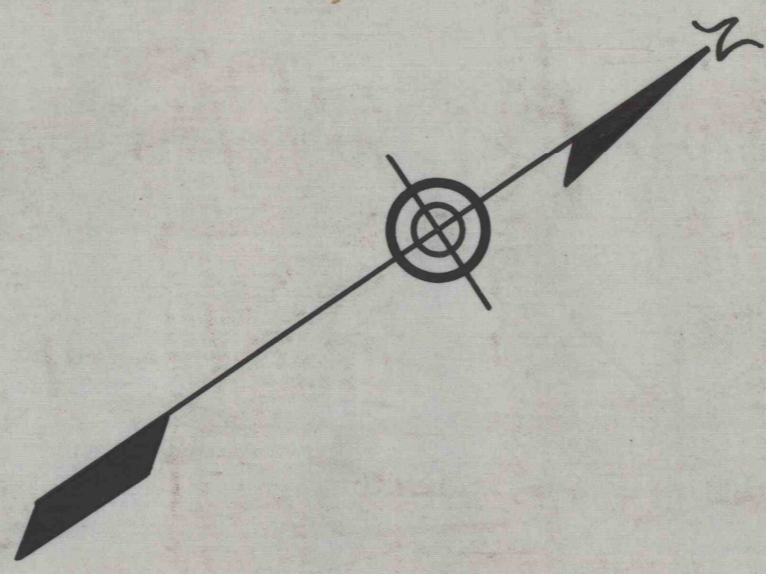


MT. UNION



A DRAFT OF TWO TRACTS OF LAND SITUATED IN WAYNE TOWNSHIP, MIFFLIN COUNTY, PENNA., THE PROPERTY OF THE NORTH AMERICAN REFRACTORIES CO. SURVEYED IN 1919 BY THE J. MURRAY AFRICA CO. RE-SURVEYED IN OCT. 1932 AND FOUND AS ABOVE REPRESENTED.

NORTH AMERICAN REFRACTORIES CO.		
CLEVELAND, OHIO.		
ENGINEERING DEPARTMENT CURWENSVILLE, PA.		
THE RESERVOIR TRACT NEAR THE MOUNT UNION PLANT.		
DRAWN <i>J.M.</i>	SCALE 1" = 200'	INDEX
CHECKED	DATE Oct. 28, 1932	60-3-450
REFERENCE	ORDER	