

# CRESCENT REFRACTORIES CO.

CURWENSVILLE, CLEARFIELD COUNTY, PA.

ENGINEERING DEPARTMENT

Tract of Land Bought of J. D. Bailey  
situated in  
Pike Twp., Clearfield Co., Pa.

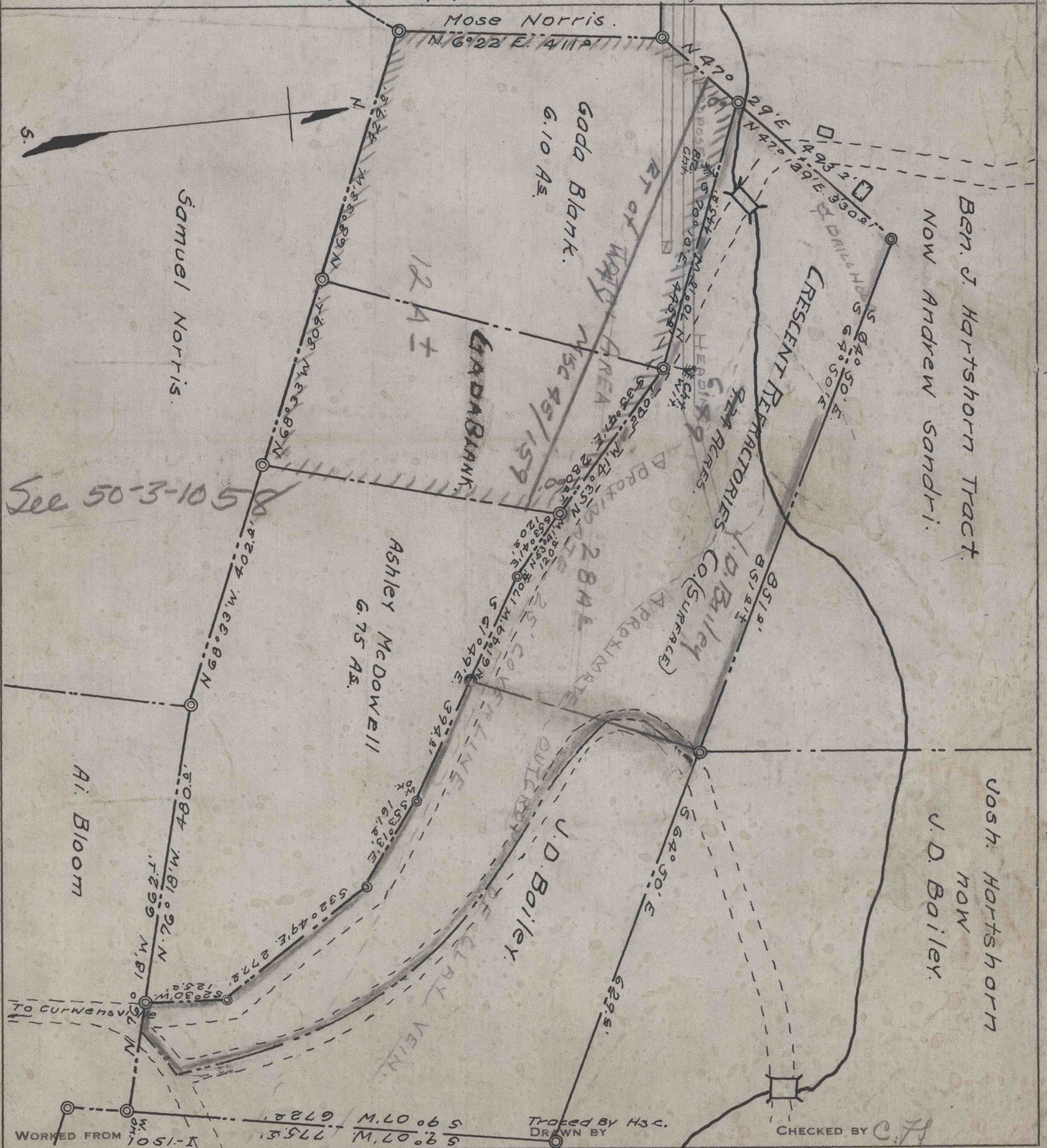
ENV. No. *LI*

SHEET No. *146-A*

*50-3-346*

DATE Feb, 23, 1920.

SCALE 1"=200'



*See 50-3-1058*

*Bought May 8, 1920 Red Book 242 Page 45.*