

Michael Sherman
To
Mrs. H. H. H. H.
July 25, 1884
D. S. 200
East of Main St. and North of
Front St.
Signed in book of Deeds 1884
Book 1, Page 25, 73 and 200
June 15, 1887 Deeds D. S. 257

Michael Sherman
To
John L. Dyer
July 18, 1883
D. S. 200
East of Main St. and North of
Front St.

Michael Sherman
To
James A. Perry
October 1, 1887
D. S. 200
East of Main St. and North of
Front St.

Michael Sherman
To
D. L. Perry
October 1, 1887
D. S. 200
East of Main St. and North of
Front St.

Michael Sherman
To
John L. Dyer
May 25, 1883
D. S. 200
East of Main St. and North of
Front St.

Michael Sherman
To
John L. Dyer
May 25, 1883
D. S. 200
East of Main St. and North of
Front St.

Michael Sherman
To
John L. Dyer
May 25, 1883
D. S. 200
East of Main St. and North of
Front St.

Michael Sherman
To
John L. Dyer
May 25, 1883
D. S. 200
East of Main St. and North of
Front St.

Michael Sherman
To
John L. Dyer
May 25, 1883
D. S. 200
East of Main St. and North of
Front St.

Michael Sherman
To
John L. Dyer
May 25, 1883
D. S. 200
East of Main St. and North of
Front St.

Michael Sherman
To
John L. Dyer
May 25, 1883
D. S. 200
East of Main St. and North of
Front St.

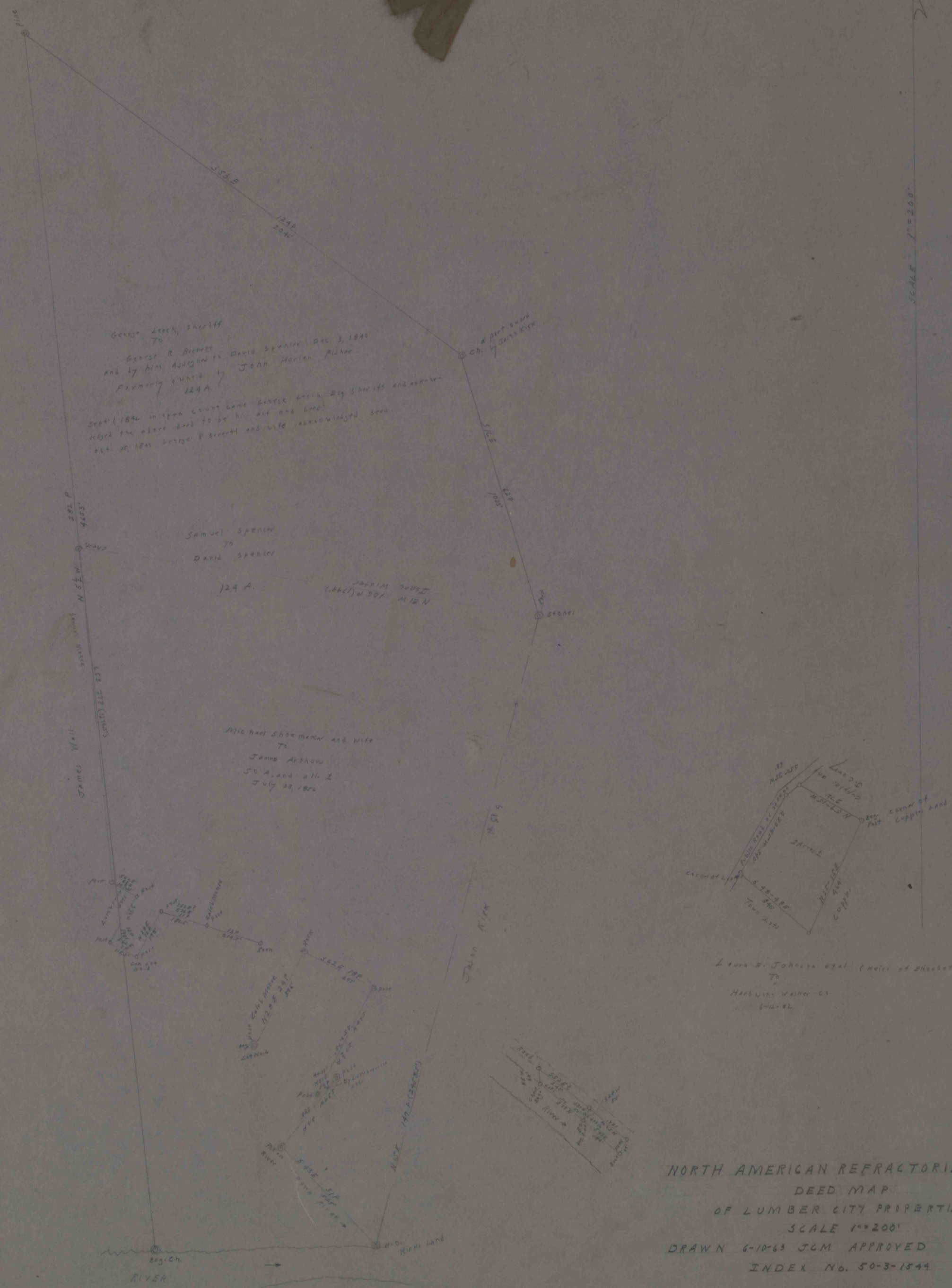
Michael Sherman
To
John L. Dyer
May 25, 1883
D. S. 200
East of Main St. and North of
Front St.

Michael Sherman
To
John L. Dyer
May 25, 1883
D. S. 200
East of Main St. and North of
Front St.

Michael Sherman
To
John L. Dyer
May 25, 1883
D. S. 200
East of Main St. and North of
Front St.

Michael Sherman
To
John L. Dyer
May 25, 1883
D. S. 200
East of Main St. and North of
Front St.

Michael Sherman
To
John L. Dyer
May 25, 1883
D. S. 200
East of Main St. and North of
Front St.



NORTH AMERICAN REFRACTORIES CO.
DEED MAP
OF LUMBER CITY PROPERTIES
SCALE 1"=200'
DRAWN 4-10-13 JCM APPROVED
INDEX No. 50-2-1844