

REFERENCE DATA

CRESCENT REFRACTORIES CO.

CURWENSVILLE, CLEARFIELD COUNTY, PA.

ENGINEERING DEPARTMENT

LAND CONVEYED BY WILEY COAL CO.
TO HARRY AUGHENBAUGH
LAWRENCE TOWNSHIP CLEARFIELD CO. PA.

ENV. No. *R2*

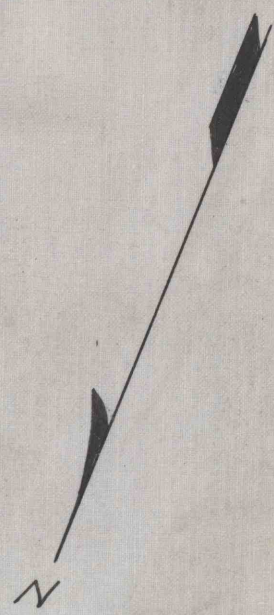
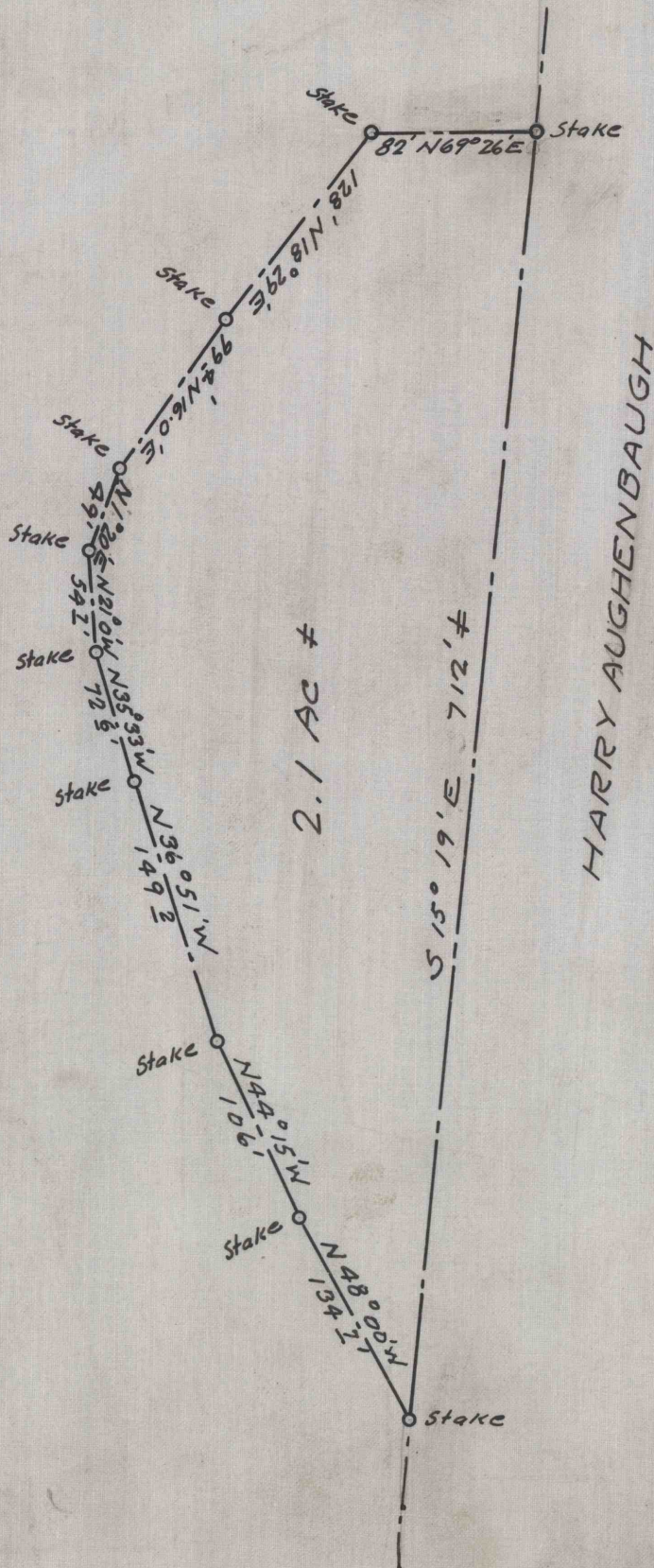
SHEET No. *64*

50-3-454

SCALE 1" = 100 FT

DATE

THE WILEY COAL CO.



WORKED FROM Survey 9-13-23

DRAWN BY *R.R.*

CHECKED BY *R.H.*