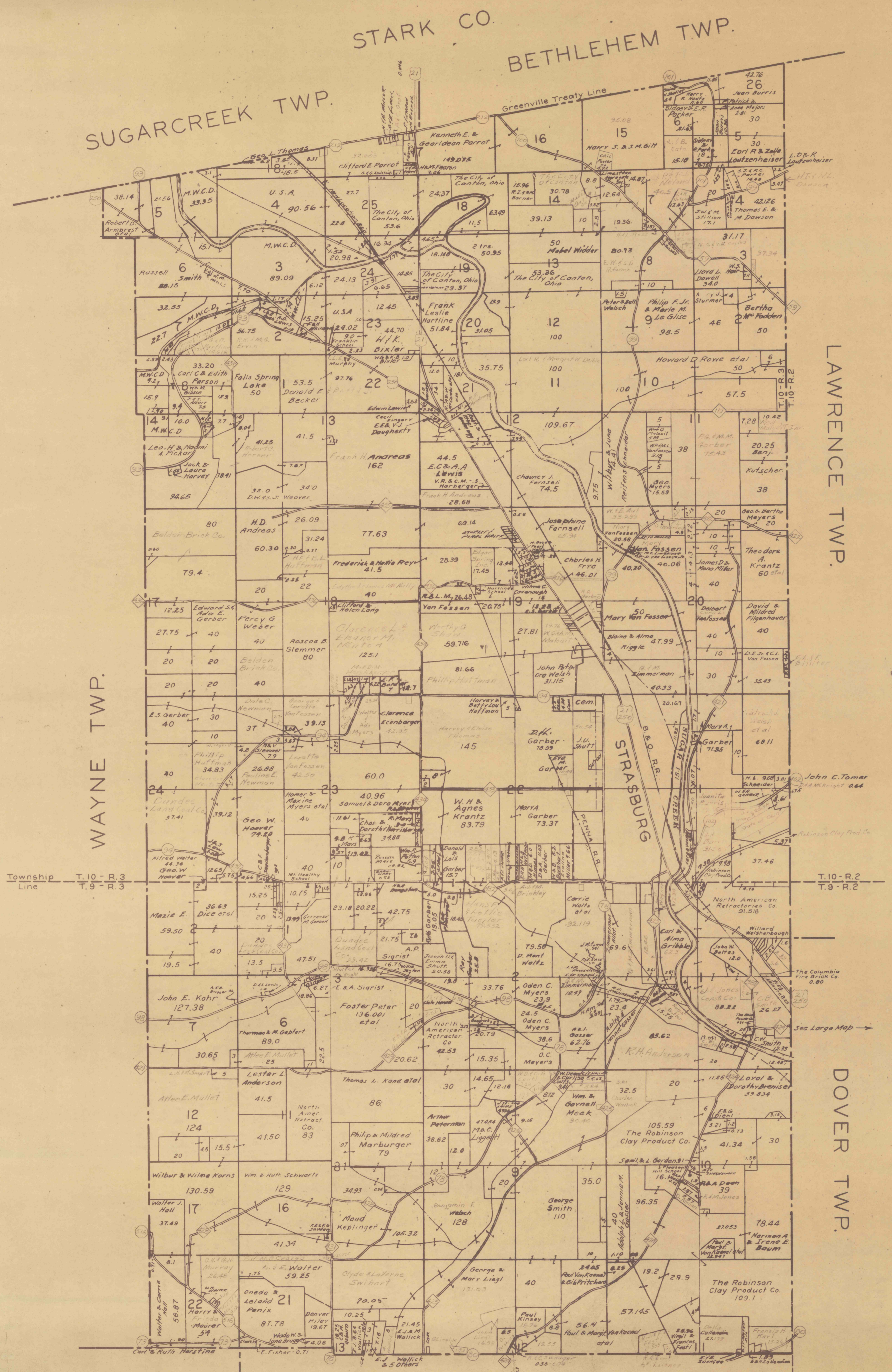
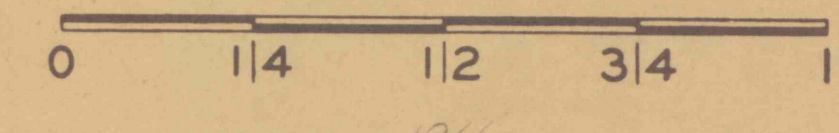


PROPERTY MAP  
OF  
**FRANKLIN TOWNSHIP**  
TUSCARAWAS COUNTY, OHIO

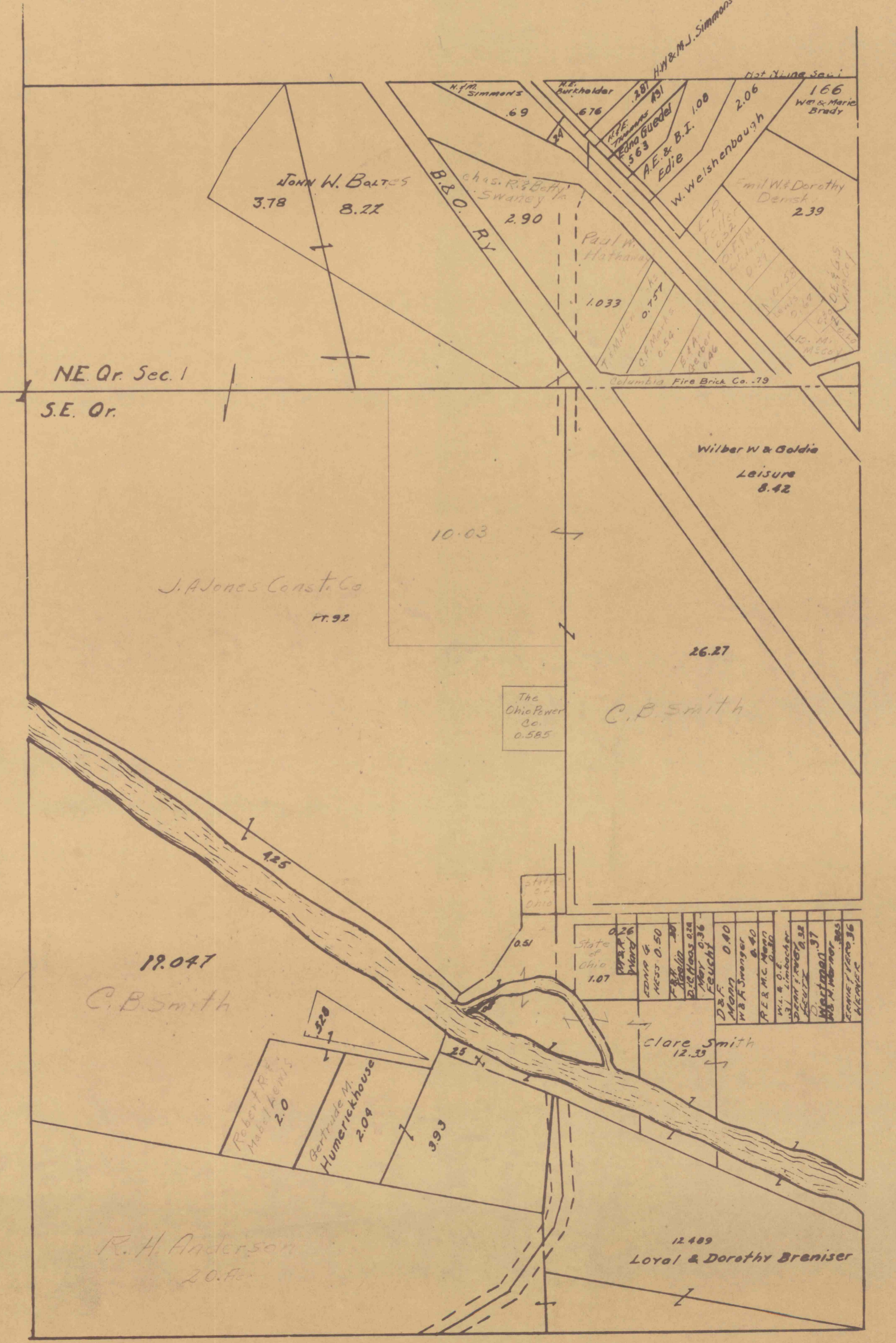
GEO. R. FIEDLER	COUNTY SURVEYOR	1924 TO 1929
E. R. McCULLOUGH	"	1929 " 1933
GEO. E. ARNOLD	"	1933 " 1940
"	COUNTY ENGINEER	1940 " 1961
CHARLES R. YOUNG	"	1961 "

INDEX 75-3-248

SCALE IN MILES



- FEDERAL ROUTES
- STATE ROUTES
- COUNTY ROADS
- ◇ TOWNSHIP ROADS



SCALE 4 CHS. = 1 IN

SUGARCREEK TWP.

DOVER TWP.