

NORTH AMERICAN REFRACTORIES CO.

**NORTH AMERICAN REFRACTORIES CO.**

CLEVELAND 14, OHIO

MAP SHOWING

**HOMER STARR PROPERTY**

- LOCATED IN -

CROMWELL TWP, HUNTINGDON CO. PA.

SCALE: 1" = 100'

DRAWN: M.W.D. TRACED: M.W.D. APPROVED: J.C.M. DATE: 6-18-56

INDEX NO 61-2-178-50

**NORTH AMERICAN REFRACTORIES CO.**  
FORMERLY  
**HOMER STARR**  
48.6 A. ±

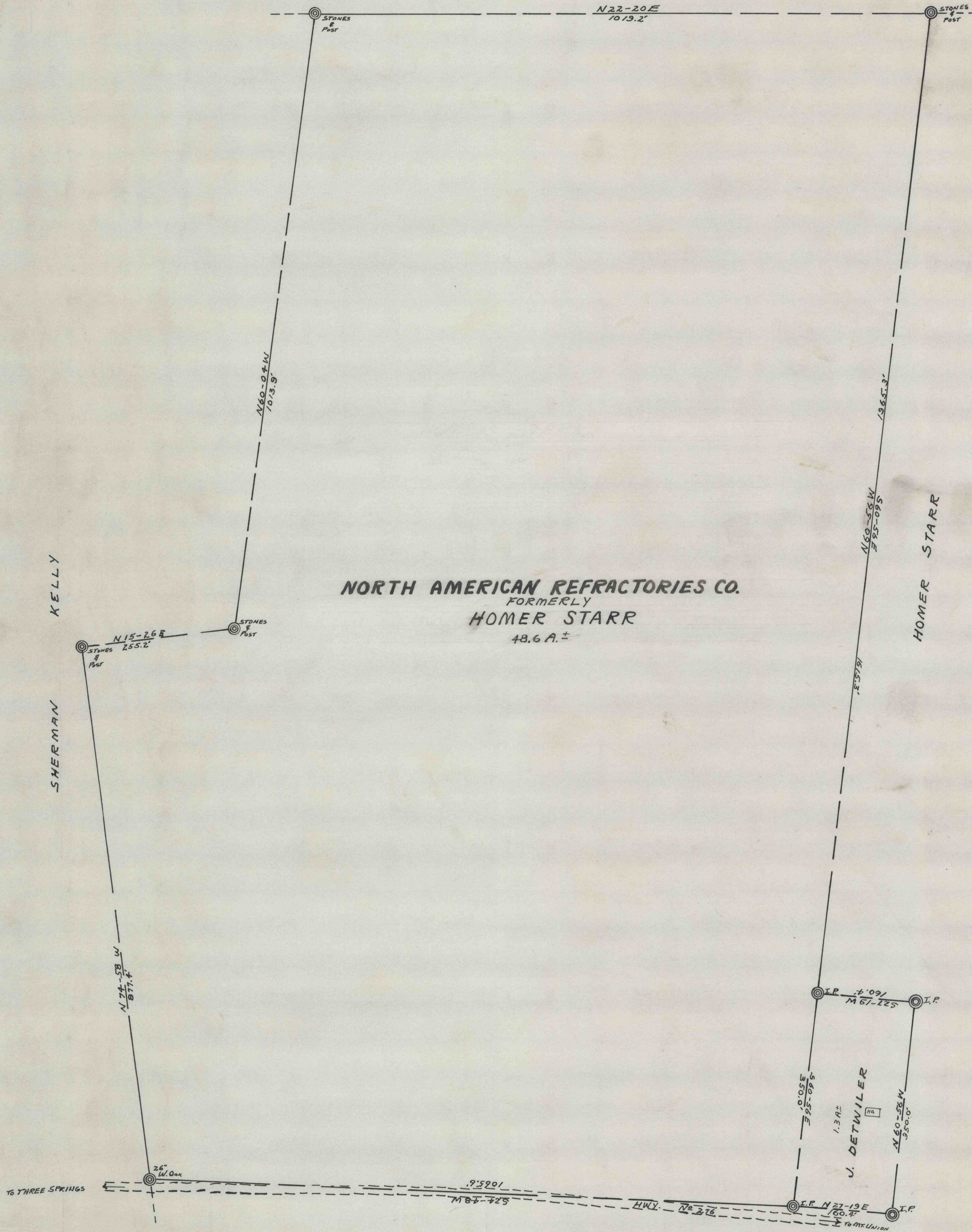
HOMER STARR

KELLY

SHERMAN

J. DETWILER

HOMER STARR



91-5-118-20

91-5-118-20