

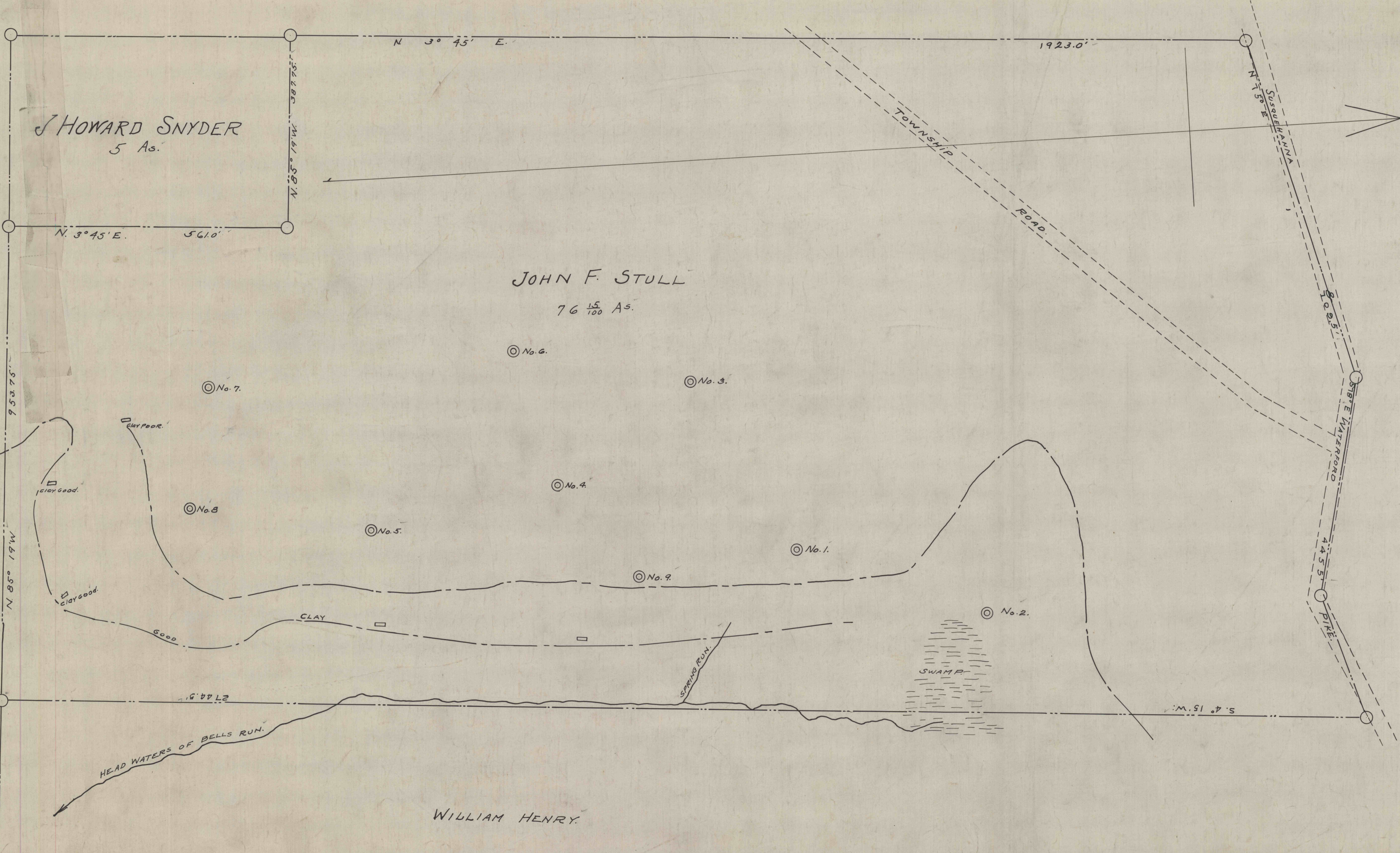
WILLIAM L. BLOOM

J HOWARD SNYDER  
5 As.

JOHN F. STULL  
76 <sup>15</sup>/<sub>100</sub> A<sup>s</sup>.

WILLIAM HENRY

GEO WEAVER EST.



CRESCENT REFRACTORIES CO. CURWENSVILLE, CLEARFIELD COUNTY, PA. ENGINEERING DEPARTMENT		
JOHN F. STULL EST. Surveyed for Curwensville Fb. Co. Bloom Township. 1906.		
Placed: H.S.C.	SCALE 1"=100'	50-3-94
DRAWN	DATE JAN 26/17	1057-1
CHECKED: C.S.	ORDER	
REFERENCE		

Traced from Print of Geo. H. Ayres