

REFERENCE DATA

CRESCENT REFRACTORIES CO.

CURWENSVILLE, CLEARFIELD COUNTY, PA.

ENGINEERING DEPARTMENT

LAND CONVEYED BY HARRY AUGHENBAUGH

TO WILEY COAL CO.

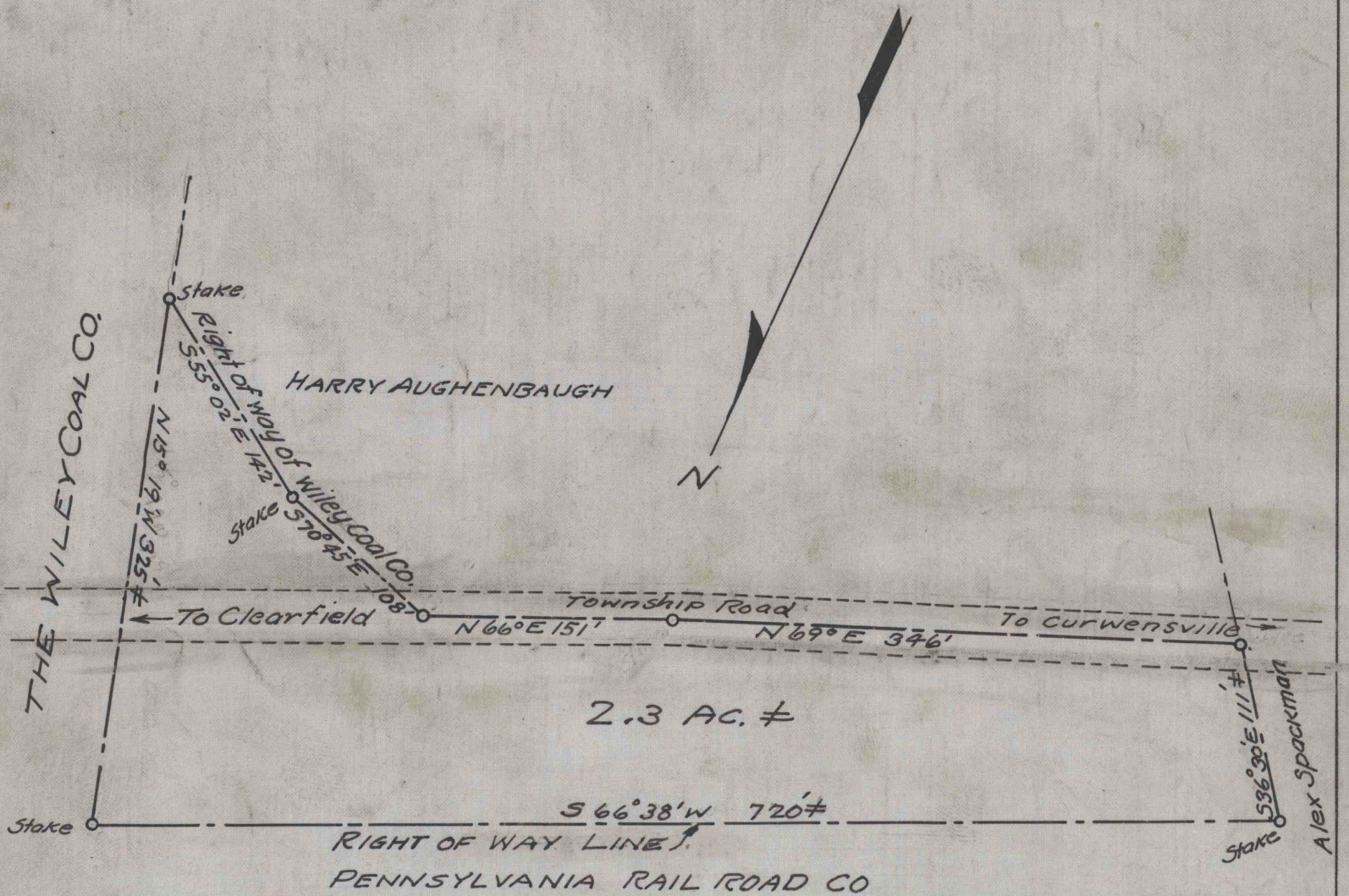
LAWRENCE TOWNSHIP CLEARFIELD CO PA DATE

ENV. No. R2

SHEET No. 65

50-3-456

SCALE 1" = 100 FT



WORKED FROM Survey 9-13-23

DRAWN BY R.Q.

CHECKED BY R.Q.