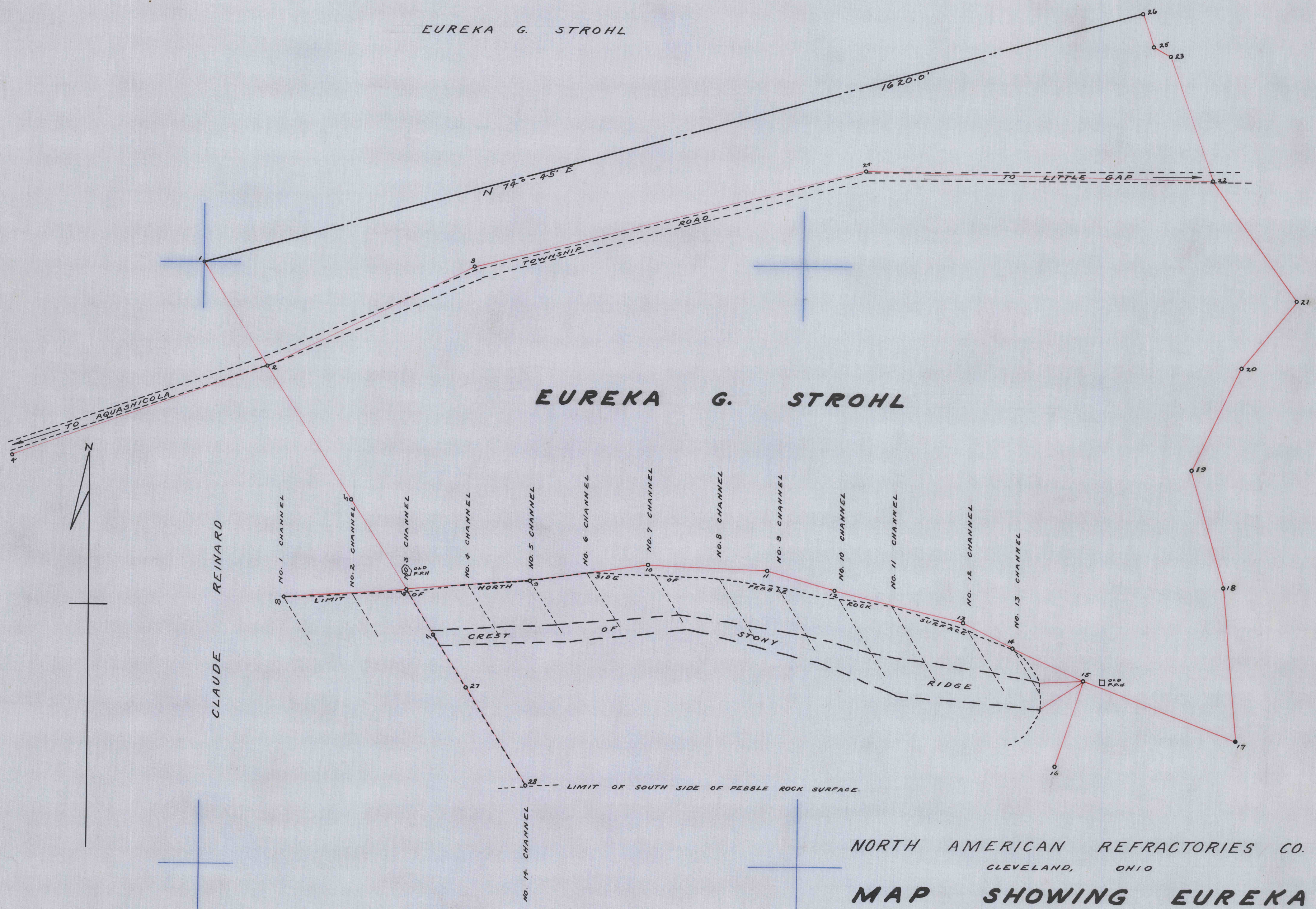


EUREKA G. STROHL



EUREKA G. STROHL

NORTH AMERICAN REFRACTORIES CO.  
CLEVELAND, OHIO

**MAP SHOWING EUREKA  
G. STROHL PROPERTY**

LOWER TOWAMENSING TOWNSHIP,  
CARBON COUNTY, PENNSYLVANIA.

SCALE: 1" = 100'  
DRAWN: J.R.H., JR. DATE: AUGUST 6, 1954  
TRACED: J.R.H., JR. CHECKED: J.C.M.

NOTEBOOK NO. 270.

INDEX No. 50-3-1256