

REFERENCE DATA

NORTH AMERICAN REFRACTORIES CO.  
1012 NATIONAL CITY BANK BUILDING  
CLEVELAND, OHIO

ENV. No.  
SHEET No.

60-3-160-50

SCALE 1"=50'

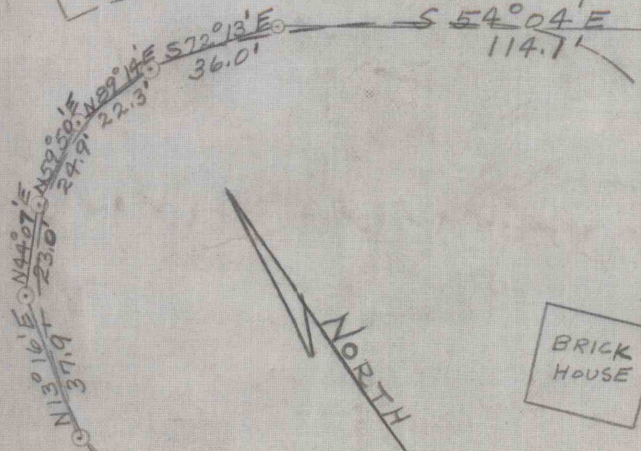
Nov. 9, 1939

← TO MOUNT UNION

STATE HIGHWAY

CINDER WALK

BEGIN.



CINDER WALK

PARK

NORTH

BRICK HOUSE

BRICK GARAGE

MANHOLE

FIRE PLUG

HEDGE

PARK ROAD

4" CONCRETE WALK  
MAPLE STREET  
4" CONCRETE WALK

6" RETAINING WALL

WORKED FROM SURVEY

DRAWN BY R.H.JV

CHECKED BY

RJL