

02-3-58

02-3-58

SUPERINTENDENT'S OFFICE LOT
FROSTBURG, Md.

REFERENCE DATA

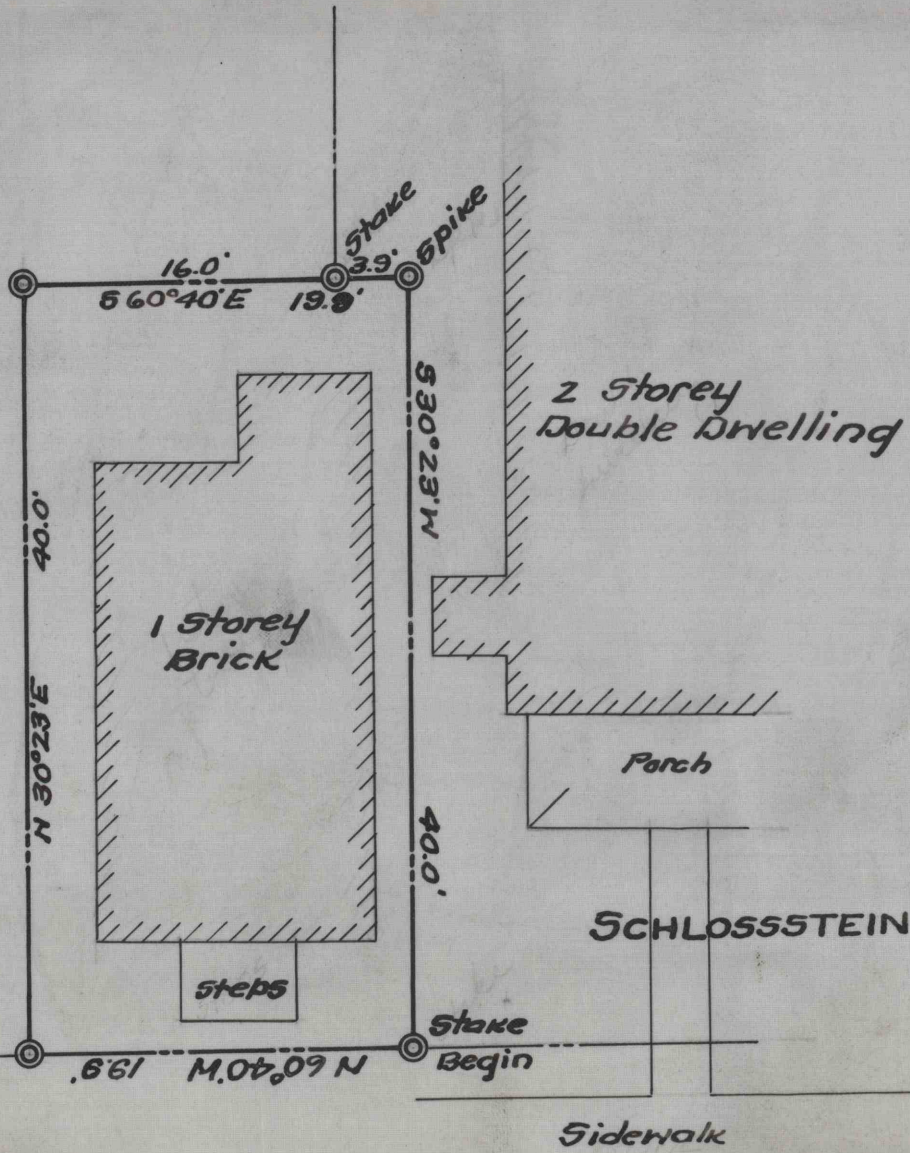
NORTH AMERICAN REFRACTORIES CO.
1012 NATIONAL CITY BANK BUILDING
CLEVELAND, OHIO

ENV. No.
SHEET No.
65-3-28

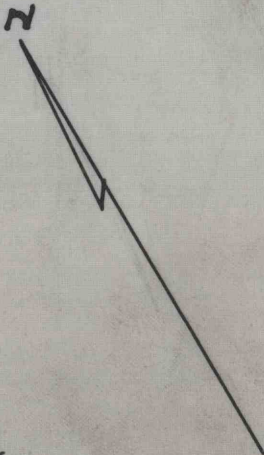
SCALE 1"=10 Ft.

DATE **SEPT. 20, 1943**

MCKENZIE



MCCULLOH STREET



WORKED FROM **SURVEY**

DRAWN BY **A.M.D.**

CHECKED BY *[Signature]*