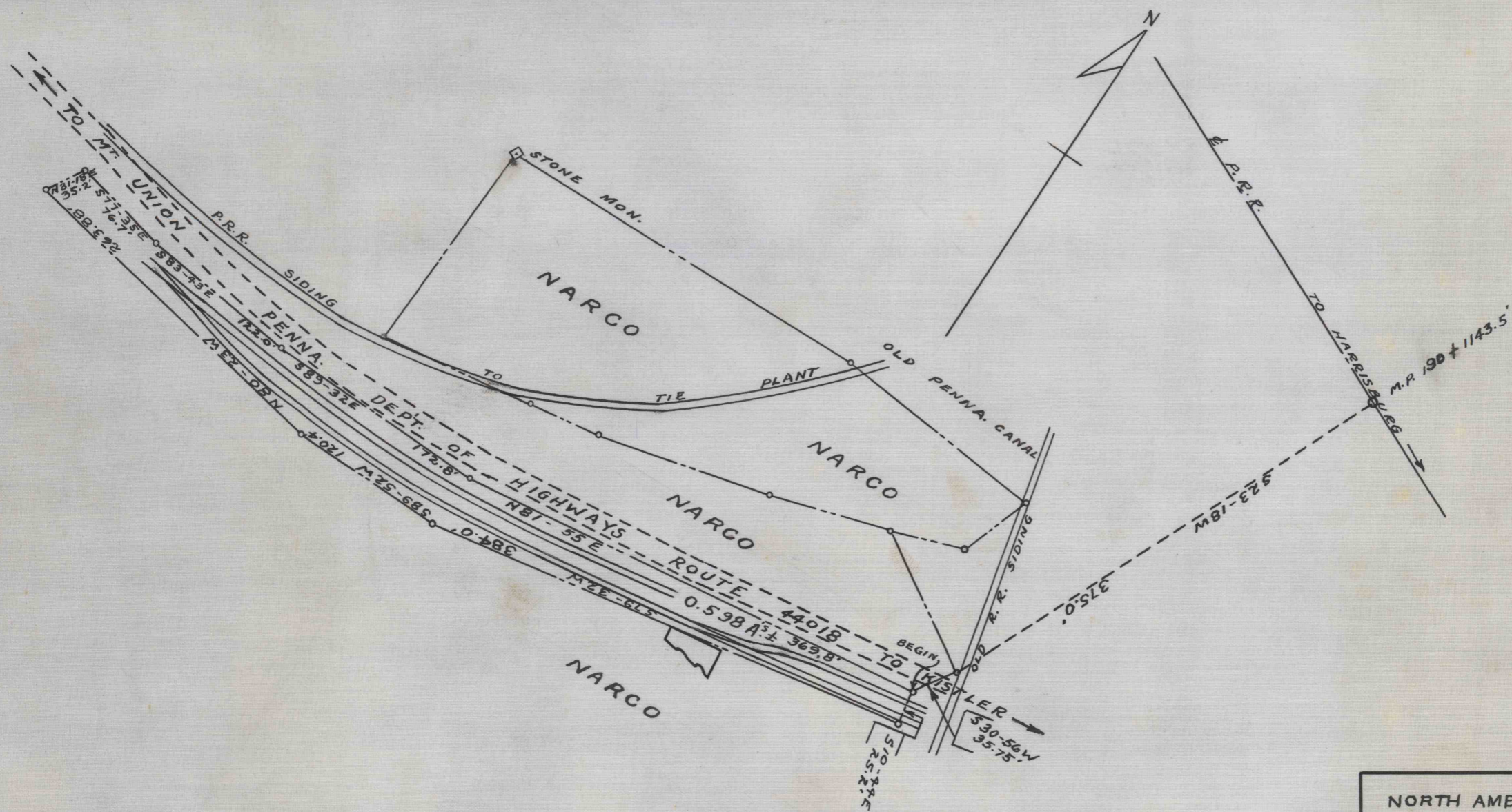


60-3-276-50

60-3-276-50

LEFT ONLY



NORTH AMERICAN REFRACTORIES CO. 1012 NATIONAL CITY BANK BUILDING CLEVELAND, OHIO	
MAP OF LAND INTENDED TO BE CONVEYED TO NARCO BY P.R.R. CO. 0.598 A'S ± MT. UNION BOROUGH, HUNTINGDON CO., PENNA.	
DRAWN J.R.H., JR. SCALE 1" = 100' CHECKED <i>JRH</i> , DATE 12-15-53 REFERENCE ORDER	60-3-276-50

60-3-276-50

60-3-276-50