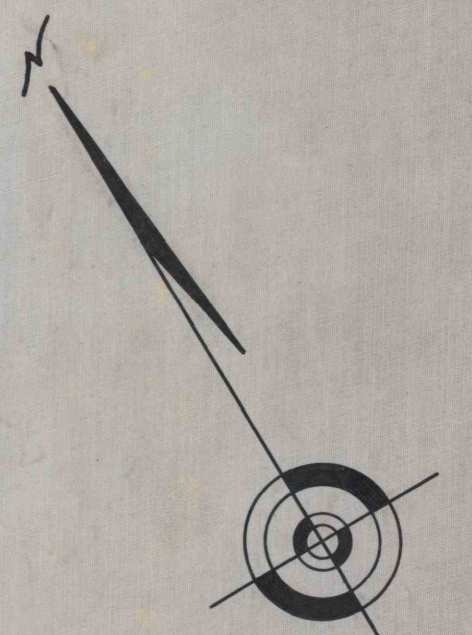
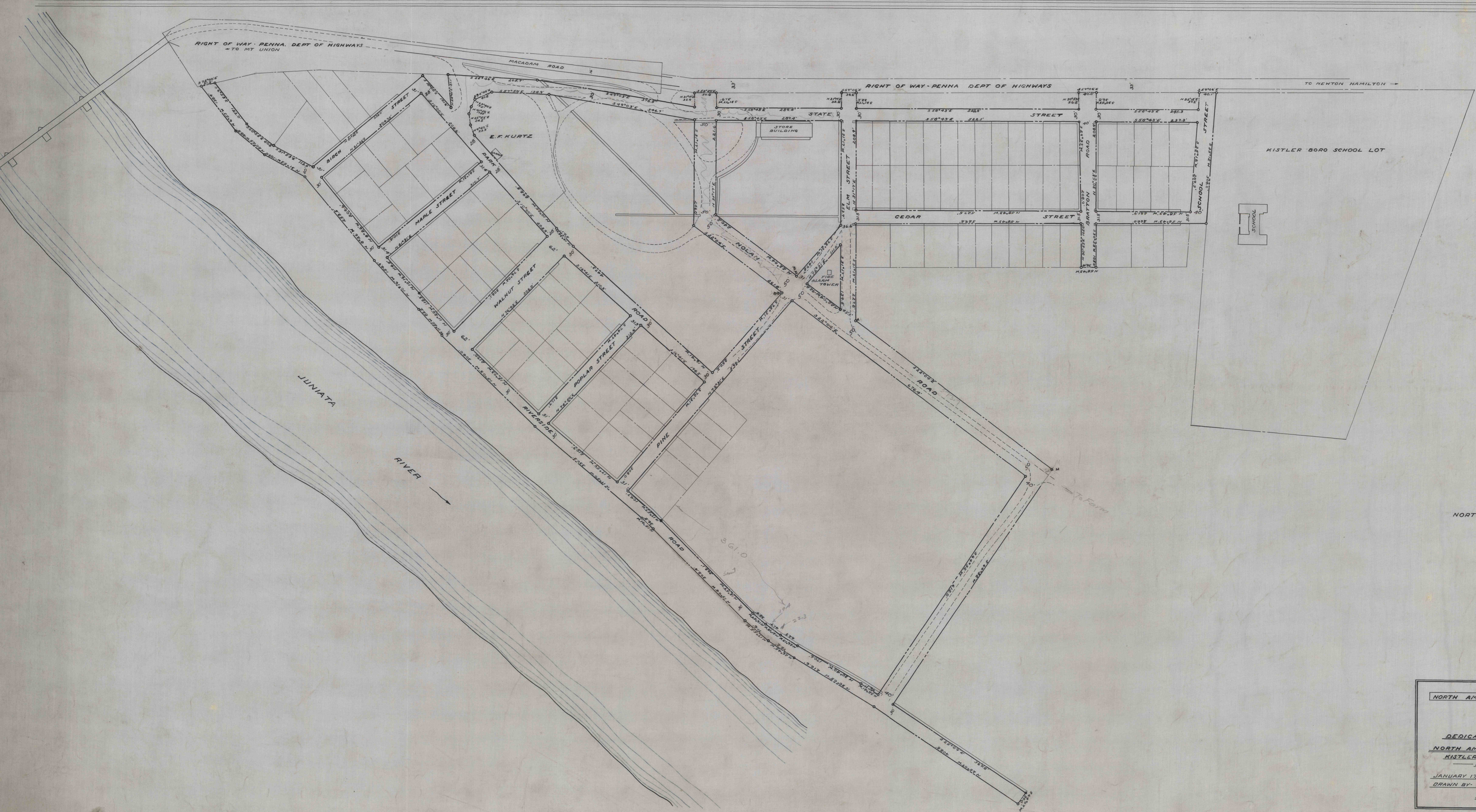


- TO ALTOONA

MAIN LINE - PENNSYLVANIA RAILROAD

TO HARRISBURG -



NORTH AMERICAN REFRACTORIES COMPANY

NORTH AMERICAN REFRACTORIES COMPANY
 CLEVELAND, OHIO

MAP OF
 STREETS
 TO BE
 DEDICATED TO KISTLER BOROUGH
 BY
 NORTH AMERICAN REFRACTORIES COMPANY
 KISTLER BOROUGH - WAYNE TOWNSHIP IN
 MIFFLIN COUNTY, PENNA.

JANUARY 17, 1940
 DRAWN BY: B.W.B.
 SCALE - 1 INCH = 100 FEET
 CHECKED BY: J.B.F.
 INDEX-60-3-166-50