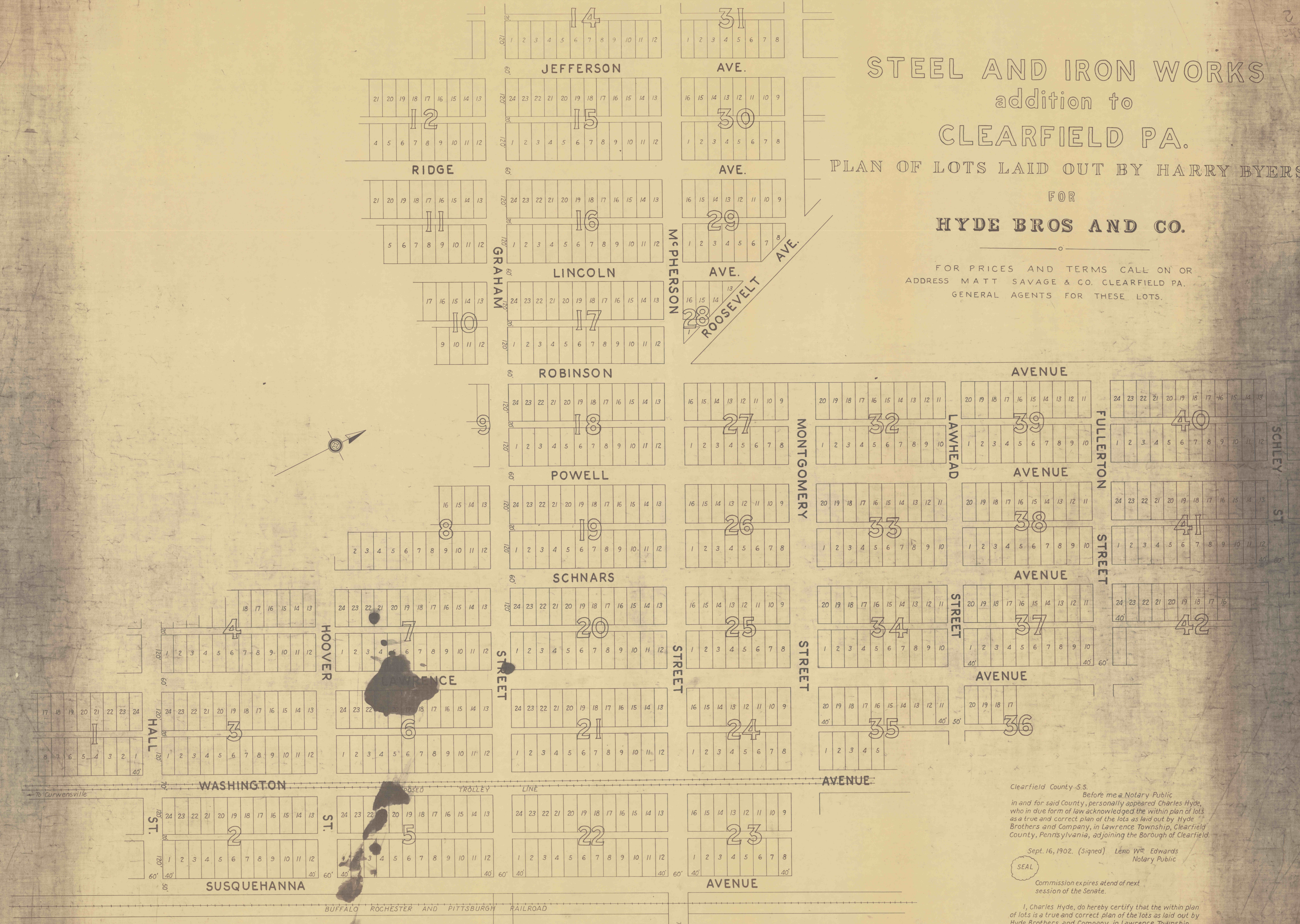


STEEL AND IRON WORKS addition to CLEARFIELD PA.

PLAN OF LOTS LAID OUT BY HARRY BYERS
FOR
HYDE BROS AND CO.

FOR PRICES AND TERMS CALL ON OR
ADDRESS MATT SAVAGE & CO. CLEARFIELD PA.
GENERAL AGENTS FOR THESE LOTS.



LOCATION CLEARFIELD
STEEL AND IRON WORKS

Clearfield County S.S.
Before me a Notary Public
in and for said County, personally appeared Charles Hyde,
who in due form of law acknowledged the within plan of lots
as a true and correct plan of the lots as laid out by Hyde
Brothers and Company, in Lawrence Township, Clearfield
County, Pennsylvania, adjoining the Borough of Clearfield.

Sept. 16, 1902. (Signed) Leno W^m Edwards
Notary Public



Commission expires at end of next
session of the Senate.

I, Charles Hyde, do hereby certify that the within plan
of lots is a true and correct plan of the lots as laid out by
Hyde Brothers and Company, in Lawrence Township,
Clearfield County, Pennsylvania, adjoining the Borough
of Clearfield, Penna.

COPIED 1946.

CLEARFIELD CO. S.S.
ENTERED OF RECORD
SEPT 16, 1902

Index No. - 50-3-1458