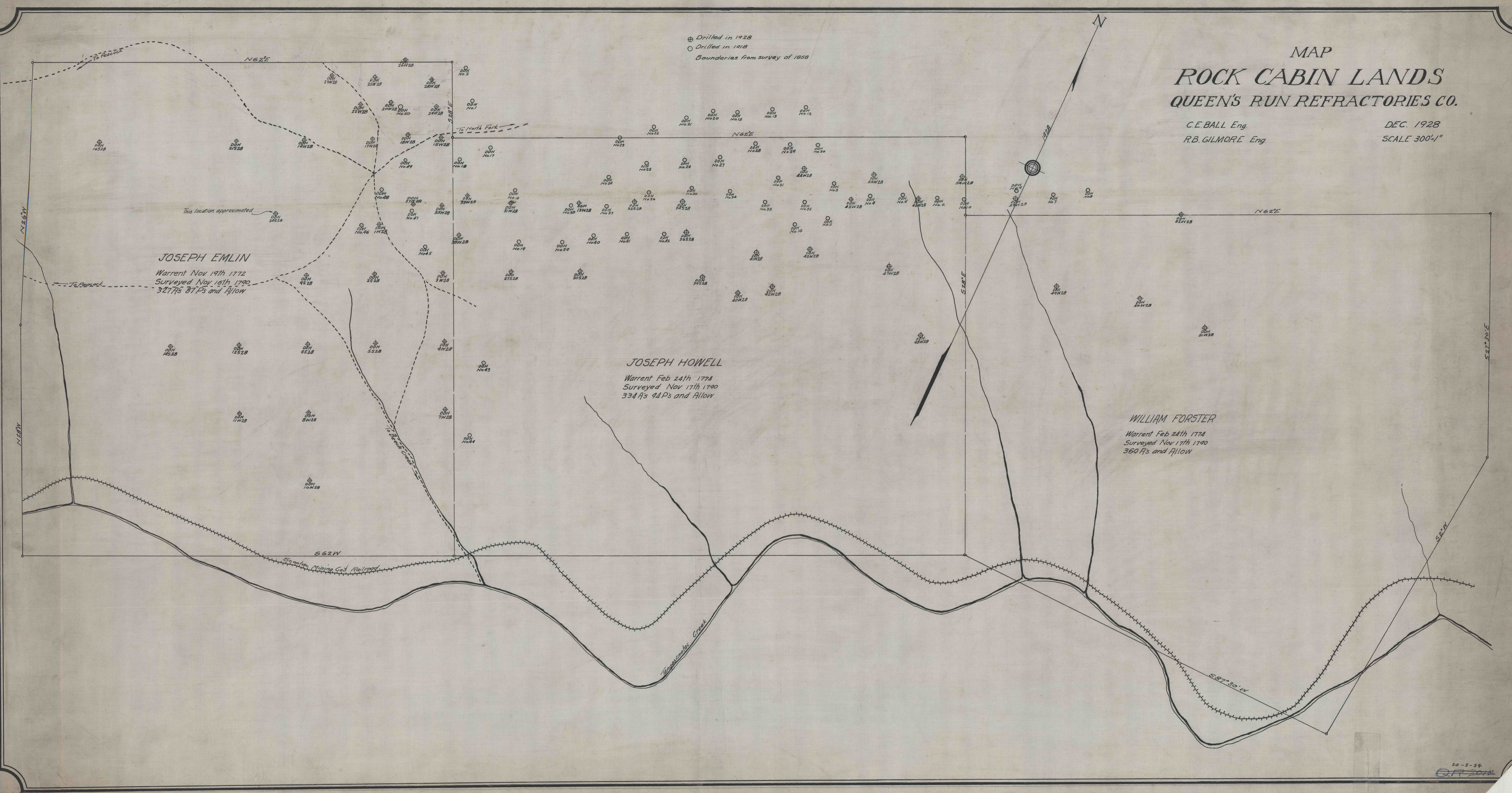


MAP
ROCK CABIN LANDS
QUEEN'S RUN REFRACTORIES CO.

C.E. BALL Eng. DEC. 1928
 R.B. GILMORE Eng. SCALE 300' = 1"

⊕ Drilled in 1928
 ○ Drilled in 1918
 Boundaries from survey of 1858



JOSEPH EMLIN
 Warrent Nov 19th 1772
 Surveyed Nov 15th 1790
 327A's 87Ps and Allow

JOSEPH HOWELL
 Warrent Feb 24th 1774
 Surveyed Nov 17th 1790
 334A's 94Ps and Allow

WILLIAM FORSTER
 Warrent Feb 24th 1774
 Surveyed Nov 17th 1790
 360A's and Allow