

41-E-05

41-E-05

# NORTH AMERICAN REFRACTORIES CO.

1012 NATIONAL CITY—EAST 6TH BUILDING

CLEVELAND 14, OHIO

ENV. No.

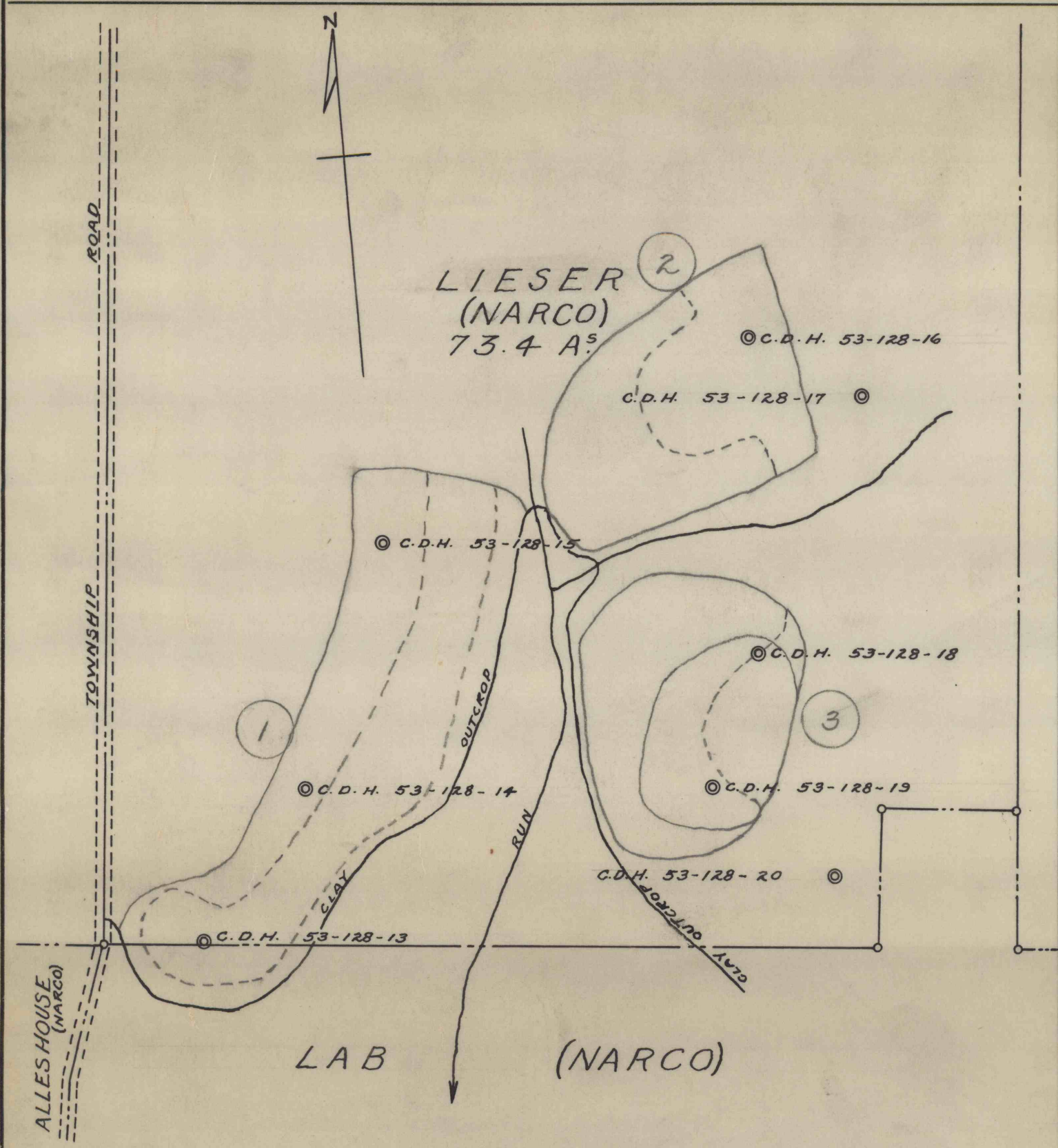
70-3-14

SHEET No.

## MAP SHOWING 1953 DRILLING ON LIESER TRACT - STRASBURG, OHIO

SCALE 1" = 200'

DATE 5-13-54



REVISION

DRAWN J.R.H./R.

CHECKED *[Signature]*

REFERENCE:

41-E-05