

NORTH AMERICAN REFRACTORIES CO.

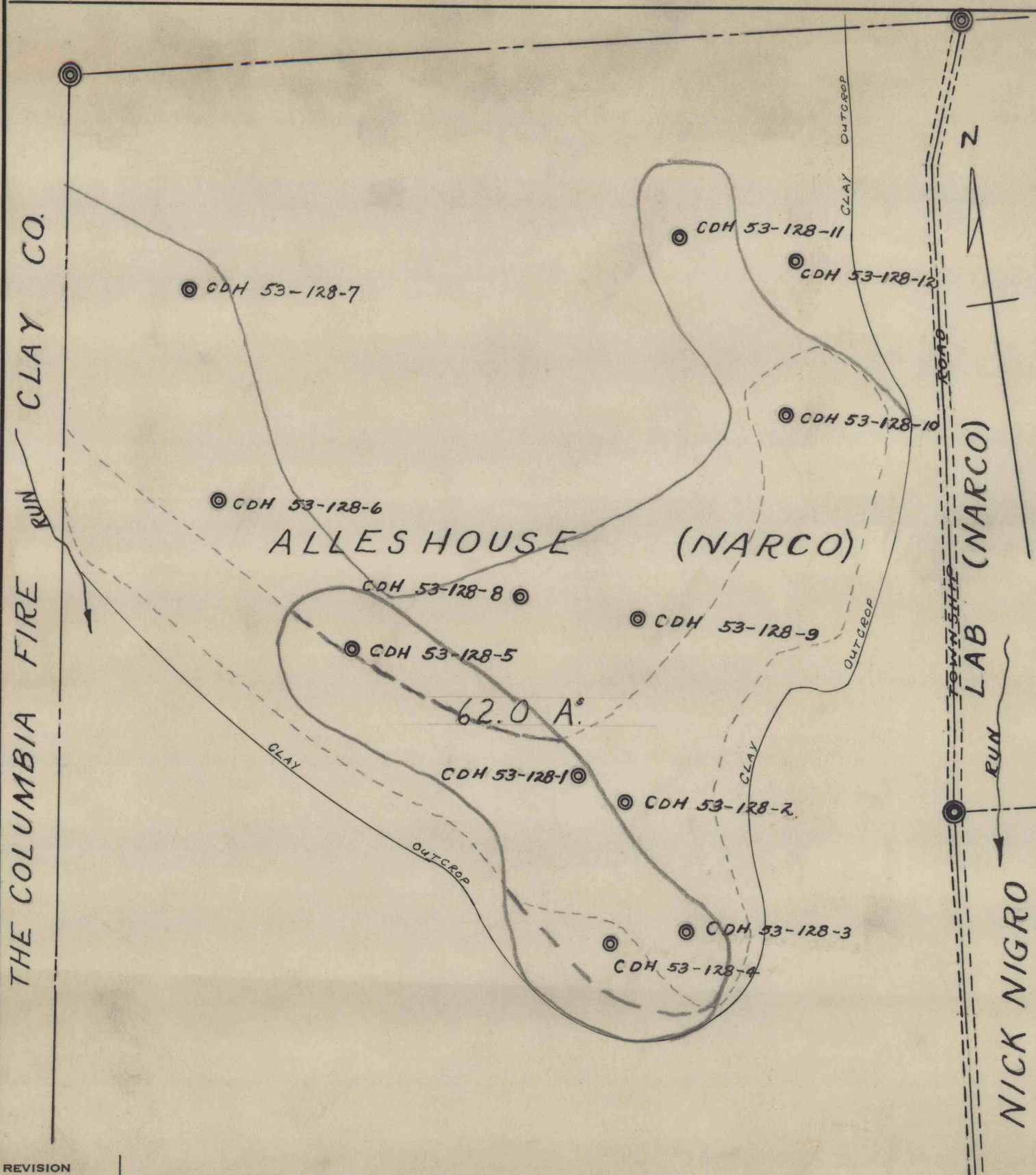
1012 NATIONAL CITY—EAST 6TH BUILDING  
CLEVELAND 14, OHIO

ENV. No. 70-3-10  
SHEET No.

MAP SHOWING 1953 DRILLING  
ON ALLESHOUSE TRACT - STRASBURG, OHIO

SCALE 1" = 200'

DATE 5-7-54



REVISION

DRAWN J.R.H.

CHECKED [Signature]

REFERENCE: