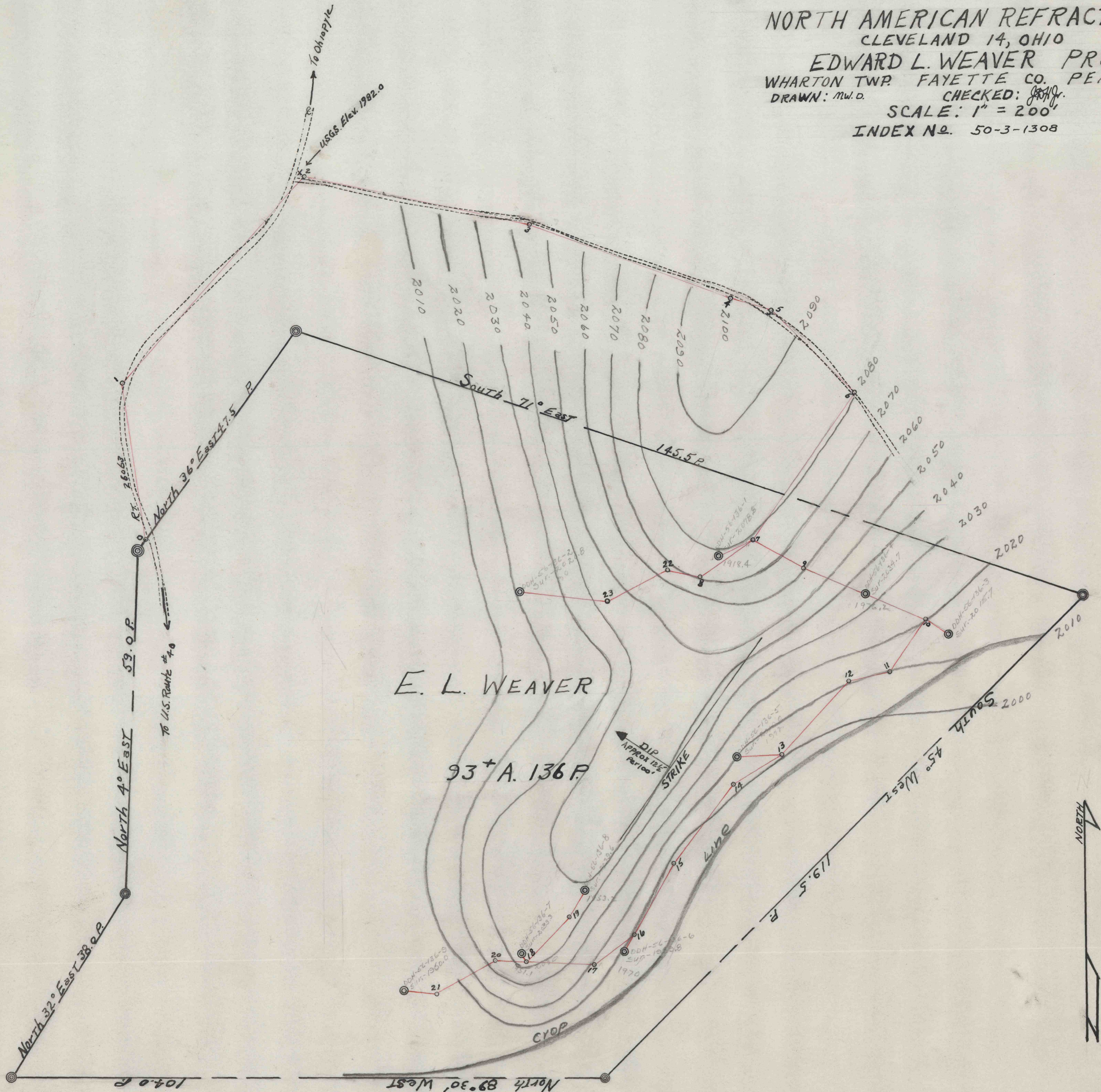


NORTH AMERICAN REFRACTORIES CO.
 CLEVELAND 14, OHIO
 EDWARD L. WEAVER PROPERTY
 WHARTON TWP. FAYETTE CO. PENNSYLVANIA
 DRAWN: M.W.D. CHECKED: J.M.G. DATE: 5-23-56
 SCALE: 1" = 200'
 INDEX No. 50-3-1308



50-3-1308