

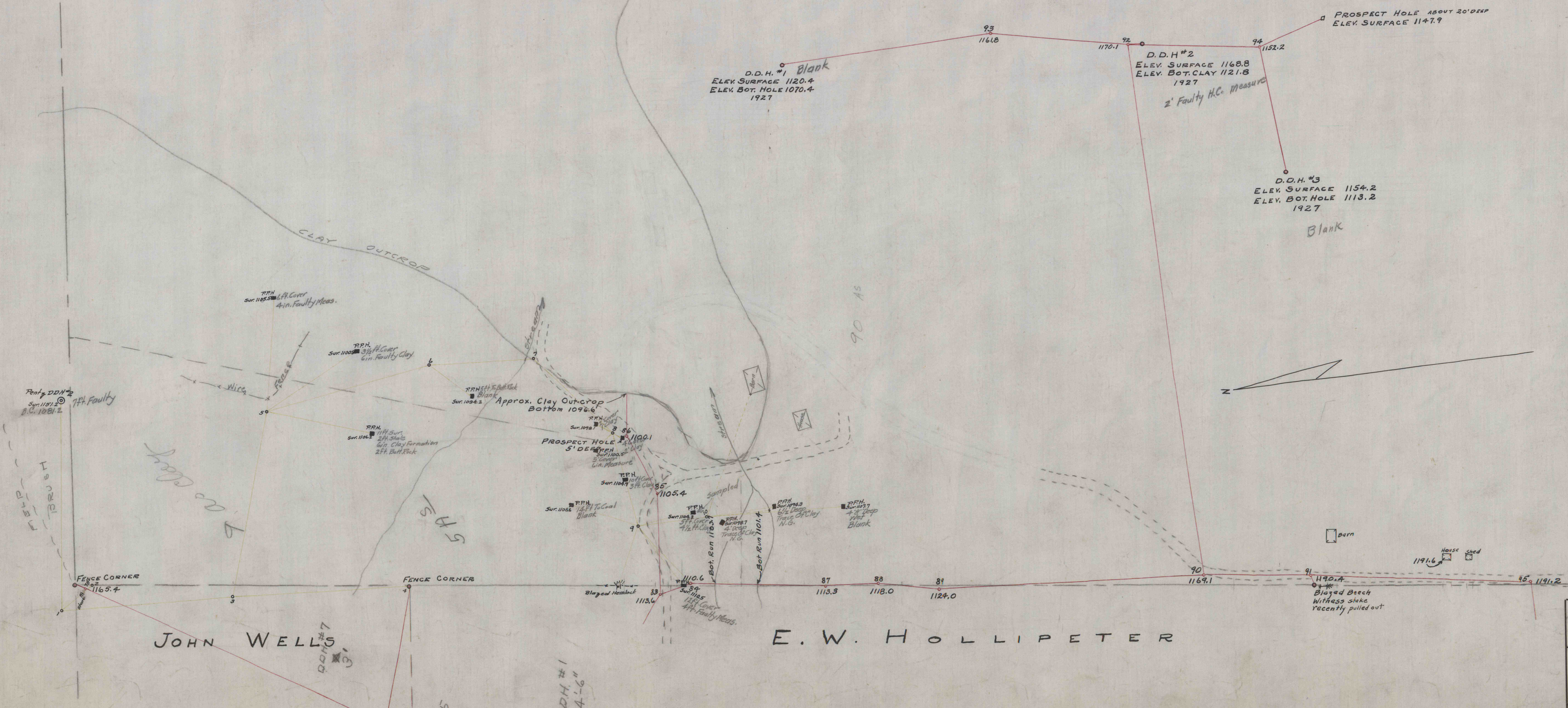
HENRY BICKLE EST.

J. F. WEAVER ET AL.

HENRY PENTZ HEIRS

MRS. MARGARET PENTZ

WILLIAM KIRK



CRESCENT REFRACTORIES CO.
CURWENSVILLE, CLEARFIELD COUNTY, PA.
ENGINEERING DEPARTMENT

MAP SHOWING THE LOCATION OF
DIAMOND DRILL HOLES ON THE
PROPERTY OF WILLIAM KIRK.

DRAWN P.F.V.	SCALE 1"=100'	10-79-I
CHECKED	DATE Nov. 4, 1928	50-3-144
REFERENCE	ORDER	