

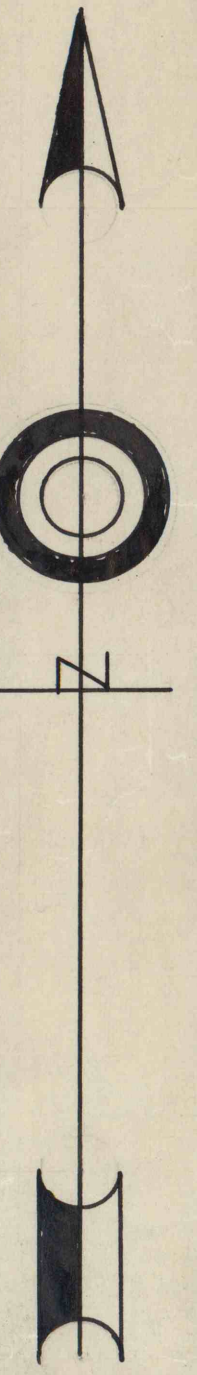
20-3-1535

20-3-1535

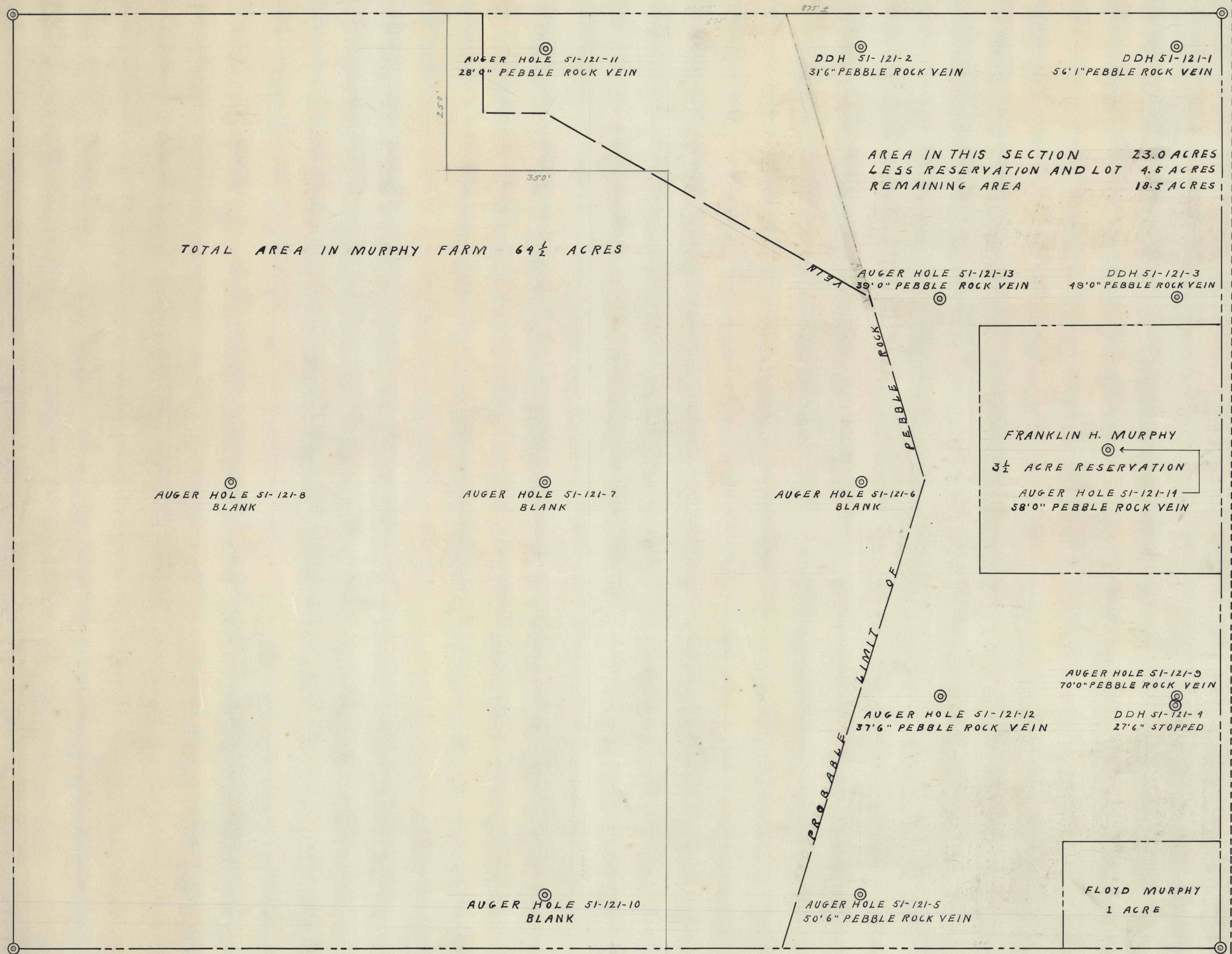
EVA A TOWN

ROBERT L. BOSTWICK

ROBERT W. SIDLEY



TO MADISON 6 MILES
OHIO ROUTE No. 328



TOTAL AREA IN MURPHY FARM 64 1/2 ACRES

AREA IN THIS SECTION 23.0 ACRES
LESS RESERVATION AND LOT 4.5 ACRES
REMAINING AREA 18.5 ACRES

FRANKLIN H. MURPHY
3 1/2 ACRE RESERVATION
AUGER HOLE 51-121-11
58'0\"/>

FLOYD MURPHY
1 ACRE

GENERAL REFRACTORIES CO.

NORTH AMERICAN REFRACTORIES COMPANY

CLEVELAND OHIO

MAP SHOWING

FRANKLIN H. MURPHY FARM

LOCATED IN

THOMPSON TOWNSHIP GAUGA COUNTY OHIO

SCALE 1"=100'

DRAWN J.C.M. TRACED J.C.M. APPROVED [Signature]

INDEX No. 50-3-1232

11-14-51

REVISED 12-6-51

20-3-1535

20-3-1535

118000811