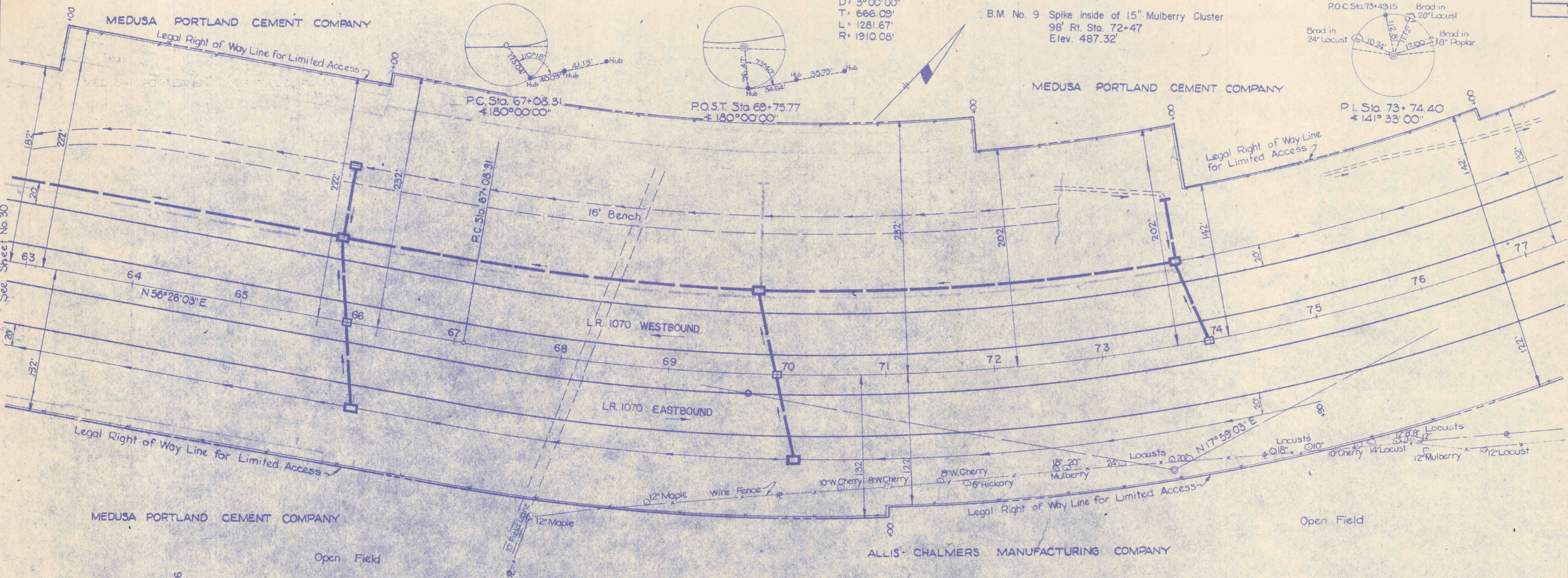
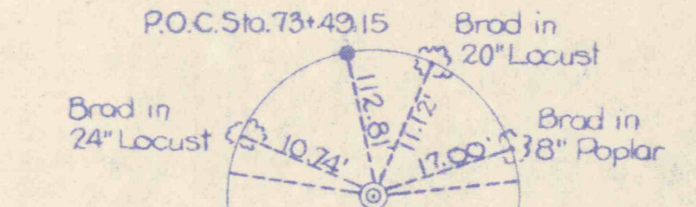


SURVEY & RIGHT OF WAY
P.I. Sta. 73+74.40
 $\Delta = 38^{\circ}27'00''$ Lt.
 $D = 3^{\circ}00'00''$
 $T = 666.09'$
 $L = 1281.67'$
 $R = 1910.08'$

B.M. No. 9 Spike inside of 15" Mulberry Cluster
98' Rt. Sta. 72+47
Elev. 487.32'



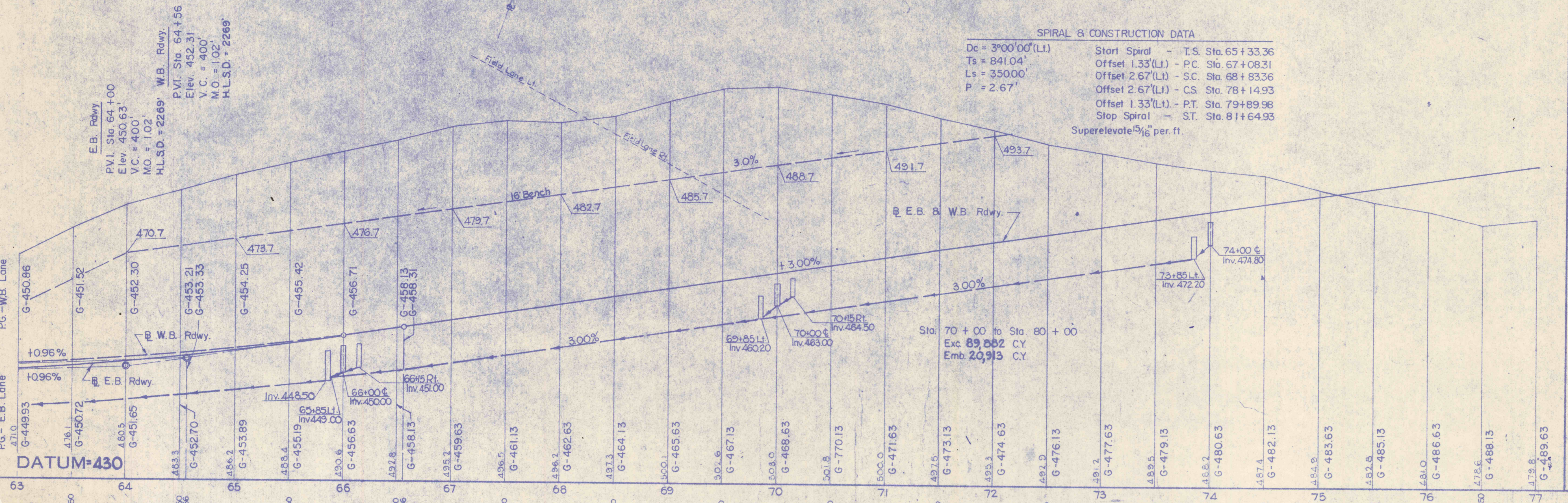
REQUIRED LIST

- Sta. 65+87 to Sta. 69+83 Lt.
Storm Sewer
396 L.F. 18" Extra Str. Pl. Cem. Conc. Pipe or Extra Str. V.C. Pipe or C.M. Pipe
234 C.Y. Cl. 2 Exc. (Pipe) (Cl. Bedding)
- Sta. 66+00
146 L.F. Cl. III 18" R.C.C. Pipe
47 C.Y. Granular Material
66 L.F. 18" A.C.C.M. Pipe FC. (Slope Lt.)
1 Type H Inlet (Bench Lt.)
1 4 Ft. Inlet (Median)
1 Type H Inlet, Modified (Lt.)
1 Type H Inlet (Rt.)
133 C.Y. Cl. 2 Exc. (Pipe) (Cl. C. Bedding)
- Sta. 69+87 to Sta. 73+83 Lt.
Storm Sewer
396 L.F. 18" Extra Str. Pl. Cem. Conc. Pipe or Extra Str. V.C. Pipe or C.M. Pipe
234 C.Y. Cl. 2 Exc. (Pipe) (Cl. C. Bedding)
- Sta. 70+00
146 L.F. Cl. III 18" R.C.C. Pipe
47 C.Y. Granular Material
1 4 Ft. Inlet (Median)
2 Type H Inlets (Lt. & Rt.)
99 C.Y. Cl. 2 Exc. (Pipe) (Cl. C. Bedding)
- Sta. 72+75 to Sta. 73+85 Lt.
84 C.Y. Cl. 2 Exc. (Par. Dit. 18" Bott.)
- Sta. 74+00
72 L.F. Cl. III 18" R.C.C. Pipe
23 C.Y. Granular Material
60 L.F. 18" A.C.C.M. Pipe FC. (Slope Lt.)
1 Type H Inlet Modified (Lt.)
1 4 Ft. Inlet (Median)
0.7 C.Y. Cl. B Conc. (Type D Edw. Lt.)
90 C.Y. Cl. 2 Exc. (Pipes & Edw.) (Cl. C. Bedding)
- Sta. 74+96 to Sta. 75+86
Lateral Bench
3,880 C.Y. Cl. 1 Exc.
3,880 C.Y. Emb. (Granular Backfill)
(See Detail Sheet No. 7)
- Sta. 75+40 to Sta. 93+95 Lt.
2,242 C.Y. Cl. 2 Exc. (Par. Dit. 18" Bott.)

SPIRAL & CONSTRUCTION DATA

$D_c = 3^{\circ}00'00''$ (Lt.) Start Spiral - T.S. Sta. 65+33.36
 $T_s = 841.04'$ Offset 1.33' (Lt.) - P.C. Sta. 67+08.31
 $L_s = 350.00'$ Offset 2.67' (Lt.) - S.C. Sta. 68+83.36
 $P = 2.67'$ Offset 2.67' (Lt.) - C.S. Sta. 78+14.93
 Offset 1.33' (Lt.) - P.T. Sta. 79+89.98
 Stop Spiral - S.T. Sta. 81+64.93

Superelevate $1\frac{5}{16}$ " per ft.



Sta. 70+00 to Sta. 80+00
Exc. 89,882 C.Y.
Emb. 20,913 C.Y.

40.75
1.25
39.50
A30
469.50

DATUM=430