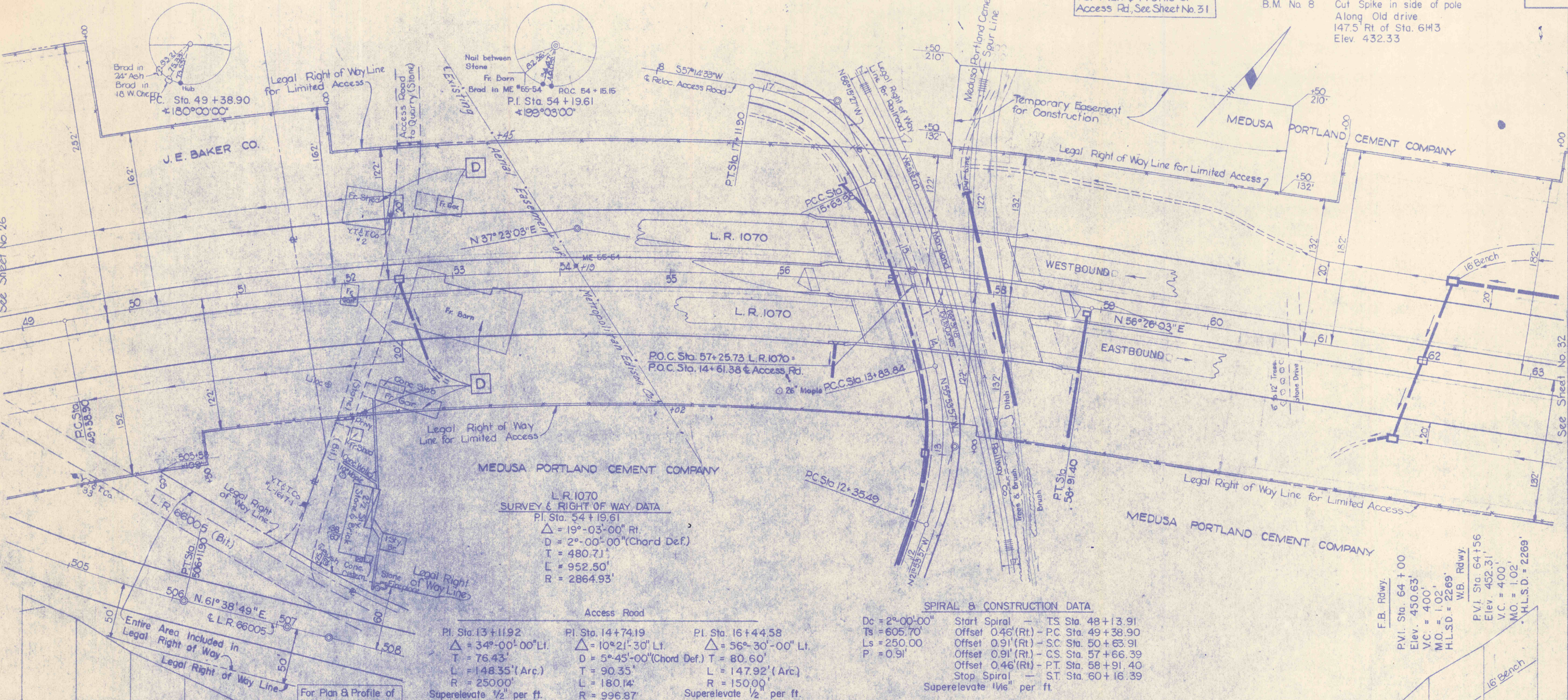


For Plan & Profile of Access Rd, See Sheet No. 31

B.M. No 8 Cut Spike in side of pole Along Old drive 147.5 Rt of Sta. 61+3 Elev. 432.33



L.R. 1070 SURVEY & RIGHT OF WAY DATA
 P.I. Sta. 54 + 19.61
 $\Delta = 19^{\circ} - 03' - 00''$ Rt.
 $D = 2^{\circ} - 00' - 00''$ (Chord Def.)
 $T = 480.71'$
 $L = 952.50'$
 $R = 2864.93'$

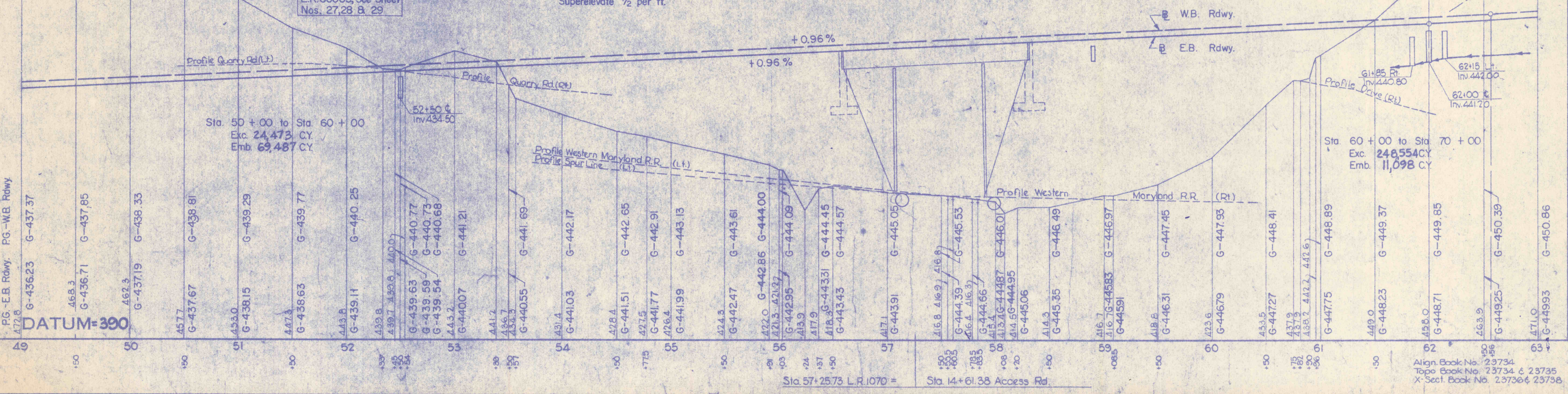
P.I. Sta. 13 + 11.92 $\Delta = 34^{\circ} - 00' - 00''$ Lt. $T = 76.43'$ $L = 148.35'$ (Arc.) $R = 2500.0'$ Superelevate $\frac{1}{2}$ per ft.	P.I. Sta. 14 + 74.19 $\Delta = 10^{\circ} - 21' - 30''$ Lt. $D = 5^{\circ} - 45' - 00''$ (Chord Def.) $T = 90.35'$ $L = 180.14'$ $R = 996.87'$ Superelevate $\frac{1}{2}$ per ft.	P.I. Sta. 16 + 44.58 $\Delta = 56^{\circ} - 30' - 00''$ Lt. $T = 80.60'$ $L = 147.92'$ (Arc.) $R = 150.00'$ Superelevate $\frac{1}{2}$ per ft.
---	---	---

SPIRAL & CONSTRUCTION DATA

$D_c = 2^{\circ} - 00' - 00''$	Start Spiral - TS Sta. 48 + 13.91
$T_s = 605.70'$	Offset 0.46' (Rt.) - PC Sta. 49 + 38.90
$L_s = 250.00'$	Offset 0.91' (Rt.) - SC Sta. 50 + 63.91
$P = 0.91'$	Offset 0.91' (Rt.) - CS Sta. 57 + 66.39
	Offset 0.46' (Rt.) - PT Sta. 58 + 91.40
	Stop Spiral - ST Sta. 60 + 16.39
	Superelevate $\frac{1}{16}$ per ft.

F.B. Rdwy.
 P.V.I. Sta. 64 + 00
 Elev. 450.63'
 $VC = 400'$
 $M.O. = 1.02'$
 $H.L.S.D. = 2269'$

W.B. Rdwy.
 P.V.I. Sta. 64 + 56
 Elev. 452.31'
 $VC = 400'$
 $M.O. = 1.02'$
 $H.L.S.D. = 2269'$



REQUIRED LIST

- Sta. 51+45 to Sta. 52+45 Rt. 201 C.Y. Cl. I Exc. (Undercutting)
- 201 C.Y. Emb. (Granular Backfill) (As Shown On Cross Sections)

Sta. 51+90 Rt.
 20 L.F. Perm. Barricade, Type A

Item No. 125c Lump Sum Complete Demolition of Fr. Bldg. Rt of Sta. 52+00

Item No. 125d Lump Sum Complete Demolition of Outhouse Rt of Sta. 52+05

Item No. 125e Lump Sum Complete Demolition of Fr. Shed Lt of Sta. 52+25

Item No. 125f Lump Sum Complete Demolition of Fr. Bldg. Rt of Sta. 52+40

Sta. 52+50
 74 L.F. Cl. III 18" R.C.C. Pipe
 26 C.Y. Granular Material
 1 4' Inlet (Median)
 41 C.Y. Cl. 2 Exc. (Pipe) (Cl. C. Bedding)
 10 C.Y. Cl. 2 Exc. (Outlet Ditch Rt.)

Sta. 52+70 Lt.
 20 L.F. Perm. Barricade, Type A

Item No. 125g Lump Sum Complete Demolition of Fr. Barn at Sta. 52+80

Item No. 125h Lump Sum Complete Demolition of Fr. Bldg. Lt. of Sta. 53+00

Sta. 53+15 to Sta. 53+51
 Lateral Bench
 765 C.Y. Cl. I Exc.
 765 C.Y. Emb. (Granular Backfill) (See Detail Sheet No. 7)

The removal of the Medusa Portland Cement Company Spur track at Sta. 57 + 80 shall be the responsibility of the contractor. All salvageable material shall be the property of Medusa.

(Continued on Sheet No. 36)

Sta. 57+25.73 L.R. 1070 Westbound Sta. 14+61.38 Access Rd. Prestressed Conc. Bridge
 Spans 10@43.10, 10@69.35, 10@47.67 c/c Brg. Min. Cl. 22.61, Skew 65°30' Rt., Rdwy. 40'

165 C.Y. Cl. 3 Exc.
 76 C.Y. Cl. A Conc.
 234 C.Y. Cl. B Conc.
 12 C.Y. Cl. C Conc.
 27,610 Lbs. Reinf. Bars
 Item No. 43c Lump Sum Prestressed Conc. Br. Superstructure
 Item No. 124c Lump Sum, Downspouting
 Item No. 37a Lump Sum Steel Beam Test Piles 10BP42
 2 ea @ 25', 2 ea @ 30'
 955 L.F. Steel Beam Piles 10BP42
 S-8613 4-25-68

Sta. 57+25.73 L.R. 1070 Eastbound Sta. 14+61.38 Access Rd. Spans 10@43.10, 10@69.35, 10@48.17 c/c Brg. Min. Cl. 22.61, Skew 65°30' Rt., Rdwy. 40'

171 C.Y. Cl. 3 Exc.
 221 C.Y. Cl. B Conc.
 22 C.Y. Cl. C Conc.
 26,185 Lbs. Reinf. Bars
 Item No. 43d Lump Sum Prestressed Conc. Br. Superstructure
 Item No. 124d Lump Sum, Downspouting
 Item No. 37 Lump Sum Steel Beam Test Piles 10BP42
 2 ea @ 20', 2 ea @ 30'
 738 L.F. Steel Beam Piles 10BP42

Align. Book No. 29734
 Topo. Book No. 23734 & 23735
 X Sect. Book No. 23736 & 23738