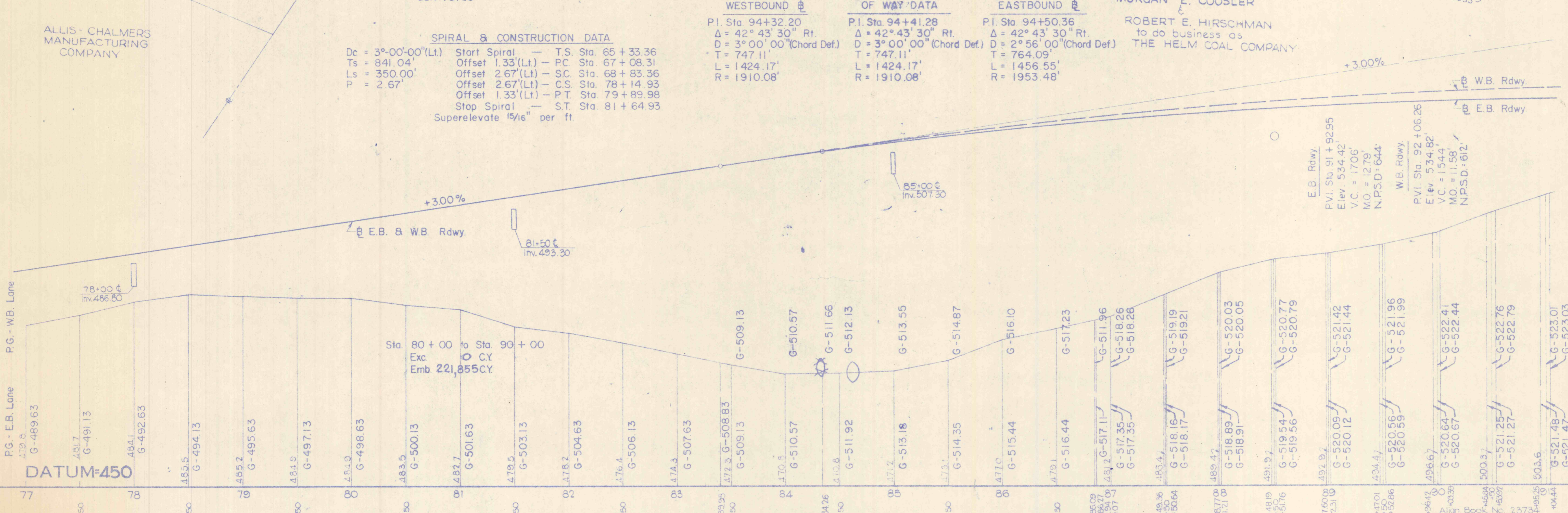
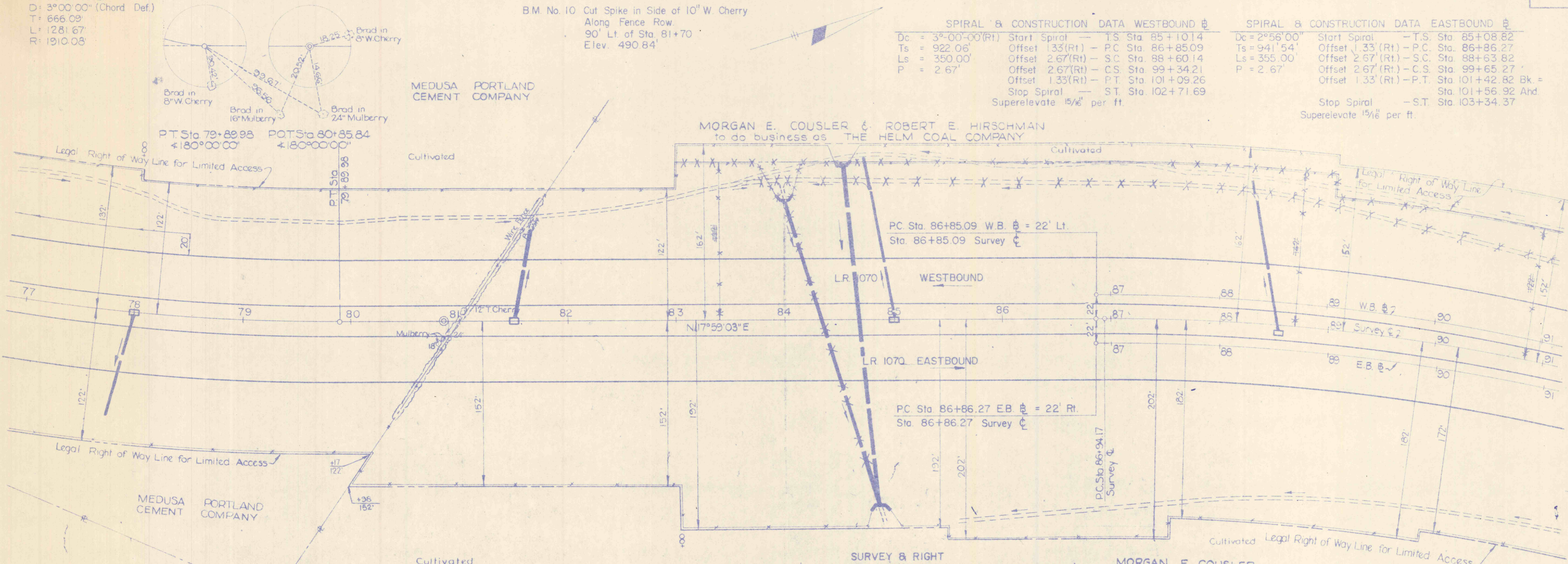


**SURVEY & RIGHT-OF-WAY DATA**  
 P.I. Sta. 73+74.40  
 $\Delta = 38^\circ 27' 00''$  Lt  
 $D = 3^\circ 00' 00''$  (Chord Def.)  
 $T = 666.09'$   
 $L = 1281.67'$   
 $R = 1910.08'$

BM. No. 10 Cut Spike in Side of 10" W. Cherry Along Fence Row. 90' Lt. of Sta. 81+70 Elev. 490.84'

**SPIRAL & CONSTRUCTION DATA WESTBOUND**  
 $D_c = 3^\circ 00' 00''$  (Rt) Start Spiral - T.S. Sta. 85+10.14  
 $T_s = 922.06'$  Offset 1.33' (Rt) - P.C. Sta. 86+85.09  
 $L_s = 350.00'$  Offset 2.67' (Rt) - S.C. Sta. 88+60.14  
 $P = 2.67'$  Offset 2.67' (Rt) - C.S. Sta. 99+34.21  
 Offset 1.33' (Rt) - P.T. Sta. 101+09.26  
 Stop Spiral - S.T. Sta. 102+71.69  
 Superelevate  $1\frac{1}{16}''$  per ft.

**SPIRAL & CONSTRUCTION DATA EASTBOUND**  
 $D_c = 2^\circ 56' 00''$  Start Spiral - T.S. Sta. 85+08.82  
 $T_s = 941.54'$  Offset 1.33' (Rt) - P.C. Sta. 86+86.27  
 $L_s = 355.00'$  Offset 2.67' (Rt) - S.C. Sta. 88+63.82  
 $P = 2.67'$  Offset 2.67' (Rt) - C.S. Sta. 99+65.27  
 Offset 1.33' (Rt) - P.T. Sta. 101+42.82 Bk. = Sta. 101+56.92 Ahd.  
 Stop Spiral - S.T. Sta. 103+34.37  
 Superelevate  $1\frac{1}{16}''$  per ft.



**REQUIRED LIST**

- Sta. 78+00
- 98 L.F. Cl. III 18" RCC Pipe
- 32 C.Y. Granular Material
- 1 4' Inlet (Median)
- 91 C.Y. Cl. 2 Exc. (Pipe)(Cl. C Bedding)
- Sta. 80+50 to Sta. 94+50 Rt.
- 787 C.Y. Cl. 1 Exc. (Fill Bench)
- 787 C.Y. Emb. (Backfill)
- Sta. 81+50
- 68 L.F. Cl. III 18" RCC Pipe
- 22 C.Y. Granular Material
- 22 L.F. 18" ACCM. Pipe, (Slope Lt.)
- 1 4' Inlet (Median)
- 65 C.Y. Cl. 2 Exc. (Pipes)(Cl. C Bedding)
- 5 C.Y. Cl. 2 Exc. (Outlet Ditch Lt.)
- Sta. 84+35
- 292 L.F. Cl. IV 36" RCC Pipe
- 182 C.Y. Granular Material
- 44 C.Y. Cl. B Conc. (Type D - w Edws. Lt. & Rt.)
- 448 C.Y. Cl. 2 Exc. (Pipes & Edws.) (Cl. C Bedding)
- 10 C.Y. Cl. 2 Exc. (Inlet Ditch Lt.)
- 15 C.Y. Cl. 2 Exc. (Outlet Ditch Rt.)
- Sta. 85+00
- 70 L.F. Cl. III 18" RCC Pipe
- 22 C.Y. Granular Material
- 50 L.F. 18" ACCM. Pipe, (Slope Lt.)
- 1 4' Inlet (Median)
- 75 C.Y. Cl. 2 Exc. (Pipes)(Cl. C Bedding)
- 5 C.Y. Cl. 2 Exc. (Outlet Ditch Lt.)
- Sta. 85+50 to Sta. 94+60 Rt.
- 838 C.Y. Cl. 2 Exc. (Par. Dit. 2' Bott.)
- Sta. 88+50
- 80 L.F. Cl. III 18" R.C.C. Pipe
- 26 C.Y. Granular Material
- 38 L.F. 18" ACCM. Pipe, (Slope Lt.)
- 1 4' Inlet (Median)
- 90 C.Y. Cl. 2 Exc. (Pipes)(Cl. C Bedding)
- 2 C.Y. Cl. 2 Exc. (Outlet Ditch Lt.)