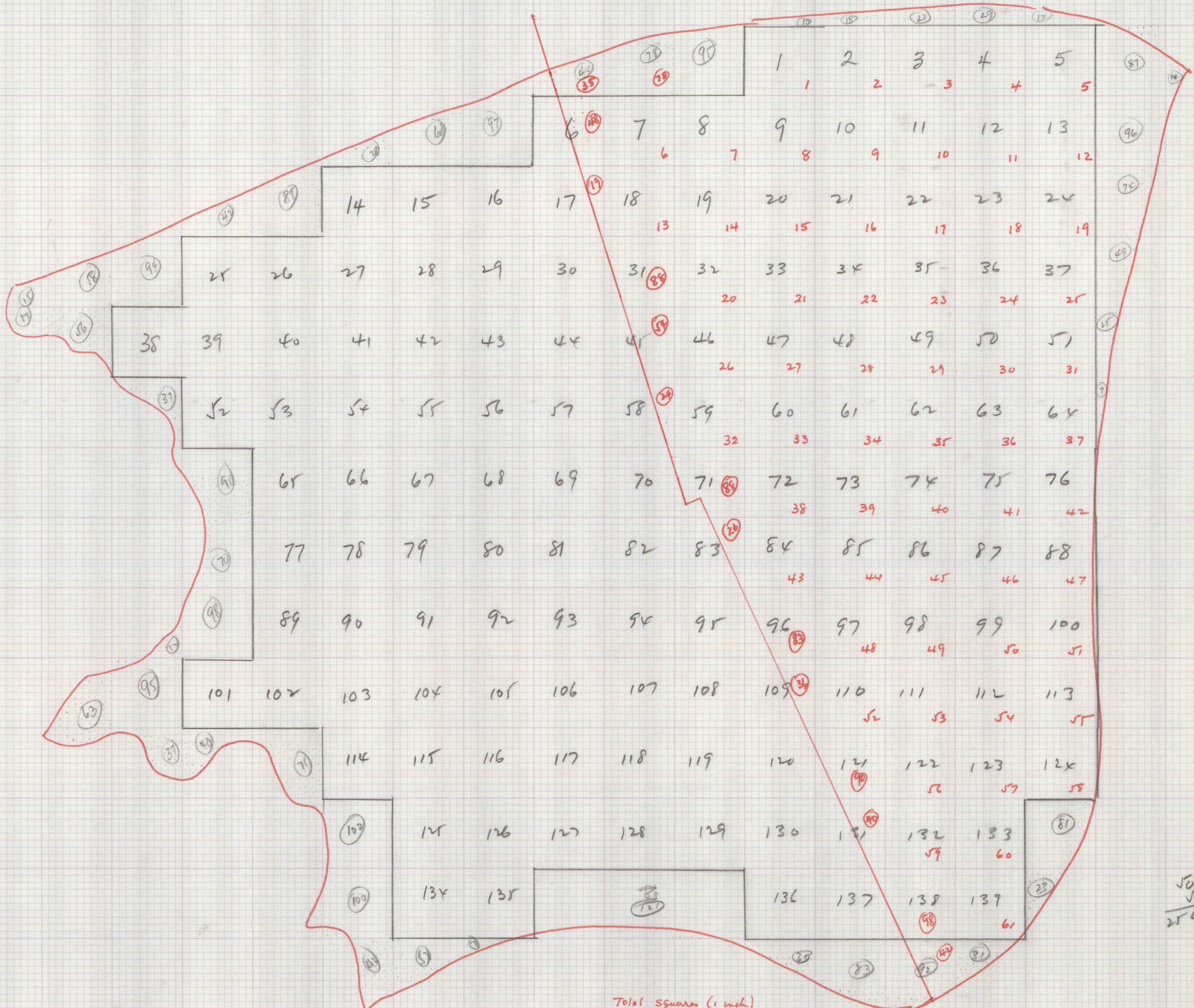


Molva  
Level 1 A series A 13-16 ?

Area within condemned reserves within blue-lined outline of A13-16 on Molva map - Your Quarry First Level Chemistry



- 87
- 96
- 74
- 49
- 25
- 7
- 51
- 23
- 31
- 42
- 98
- 40
- 90
- 36
- 83
- 26
- 88
- 54
- 54
- 88
- 19
- 48
- 55
- 78
- 95
- 10
- 18
- 23
- 29
- 17
- 1514

50  
2500 sq ft per one  
inch square

139  
+ 26.2  
165.2

2500  
165  
12500  
15000  
2500  
412500 sq ft  
40 thickness  
16500000  
1375000 tons

Total squares (1 inch)  
61  
15.2  
76.2

1524 small sq

76 sq inch  
2500 sq ft / inch square  
38000  
15.2  
190,000 sq ft

28.5  
190,000  
16650000  
285  
45150000  
36  
376250

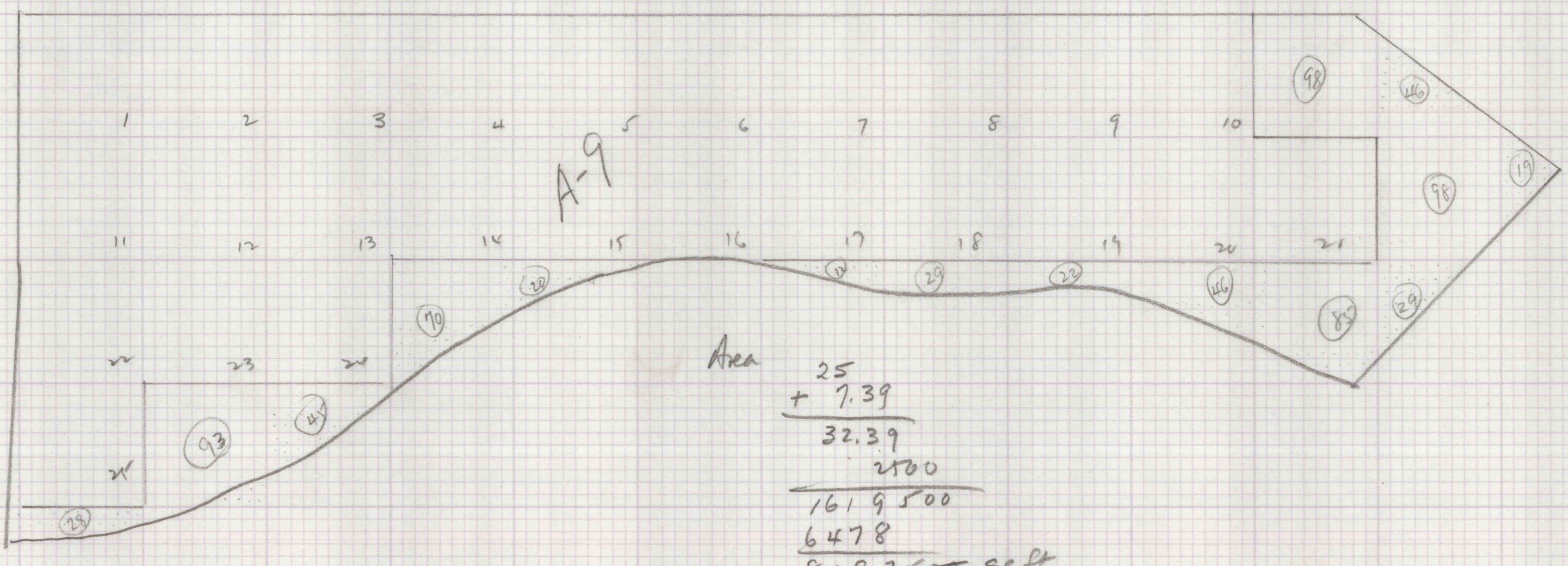
12) 760000  
63333  
683000 tons First Level

165.2 Total  
- 76.2  
89.0 uncondemned area  
2500  
89  
22500  
200  
222500 sq ft

Depth of hole - uncondemned  
12) 476 39.67  
36  
116  
108  
80  
72  
50

222500  
39.67  
1557500  
13350  
20025  
6675  
12) 8826575 → 735,548

Red numbers show squares etc under condemned reserves  
10/26/22 1992



Area  
25  
+ 7.39  
32.39  
2500  
1619500  
6478  
8097500 sq ft  
60.6  
485850  
4858500  
12) 49070850 → 408,924