

SURFICIAL GEOLOGY OF THE RED LION 7.5' QUADRANGLE, PA

Open-File Report 96-02

RED LION QUADRANGLE
PENNSYLVANIA—YORK CO.
7.5 MINUTE SERIES (TOPOGRAPHIC)

by W. D. Sevon
1996

UNITED STATES
DEPARTMENT OF THE INTERIOR
GEOLOGICAL SURVEY

**THIS REPORT HAS NOT BEEN REVIEWED
FOR CONFORMITY WITH THE PUBLICATION STANDARDS
OF THE PENNSYLVANIA GEOLOGICAL SURVEY.**

EXPLANATION

AF = Artificial Fill
Compacted to semi-compacted material used for fill. Composed of locally derived bedrock or surficial material.

A = Alluvium
Material underlies narrow to broad, flat-surfaced floodplains of perennial streams. Comprises stratified sand, silt, and clay in upper part; same plus gravel in lower part. Generally less than 10 feet thick.

C = Colluvium
Colluvium is unsorted and unstratified to crudely stratified debris derived from underlying bedrock. Comprises fragments set in finer-grained matrix. Platy fragments in schist bedrock areas (RC); more sand in quartzite bedrock areas (RC_q). Mapped where greater than 6 feet thick.

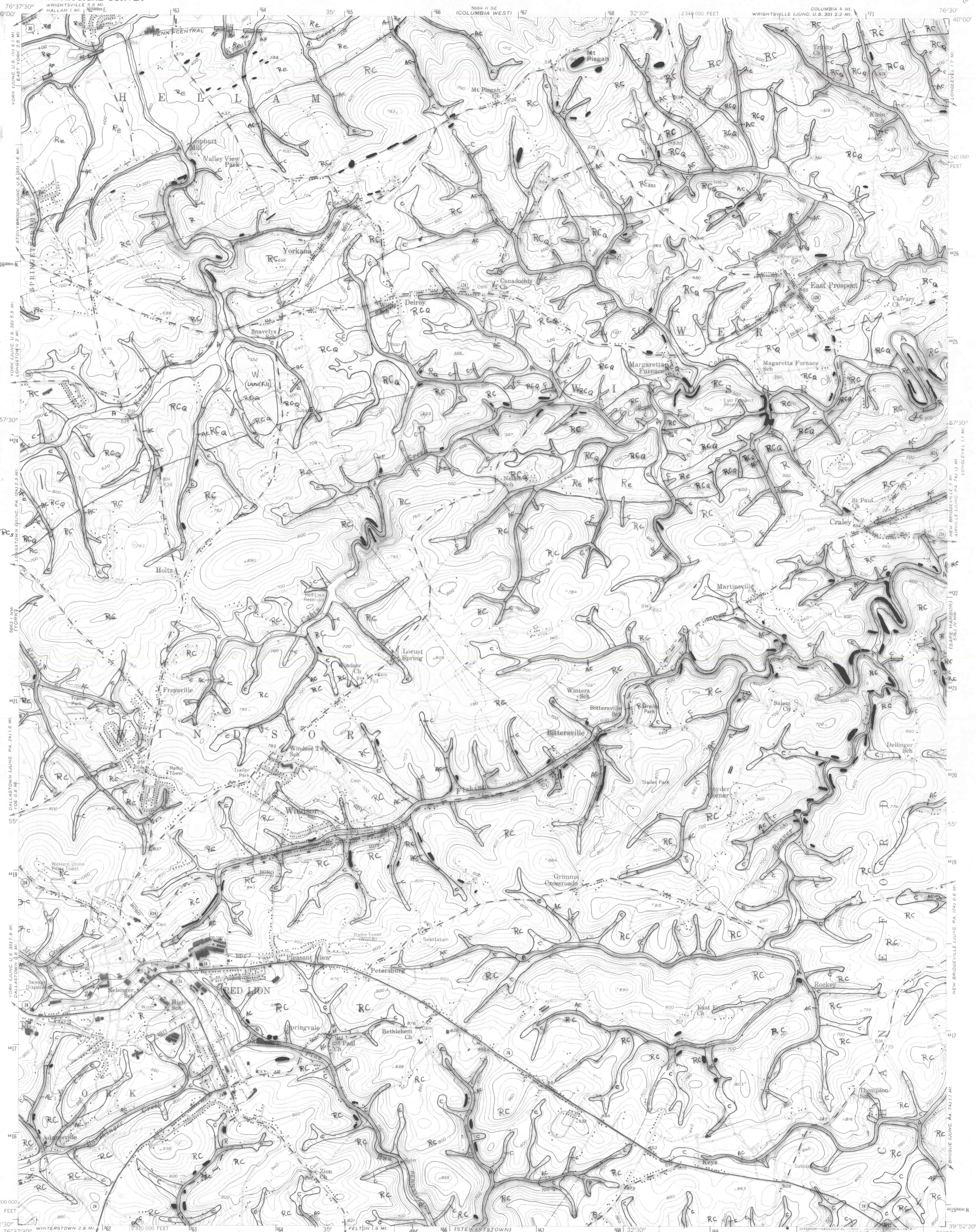
AC = Alluvium and colluvium undivided
Alluvium and colluvium are mapped together where the valley in which they occur is too narrow to map the units separately at 1:24,000 scale.

RC = Schist bedrock and colluvium undivided
Surfaces with low to steep slopes underlain by unweathered or weathered schist bedrock and thin (<6 feet), discontinuous deposits of colluvium.

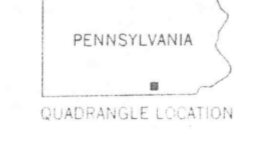
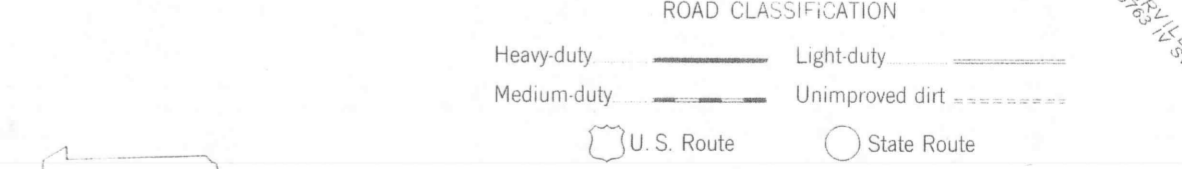
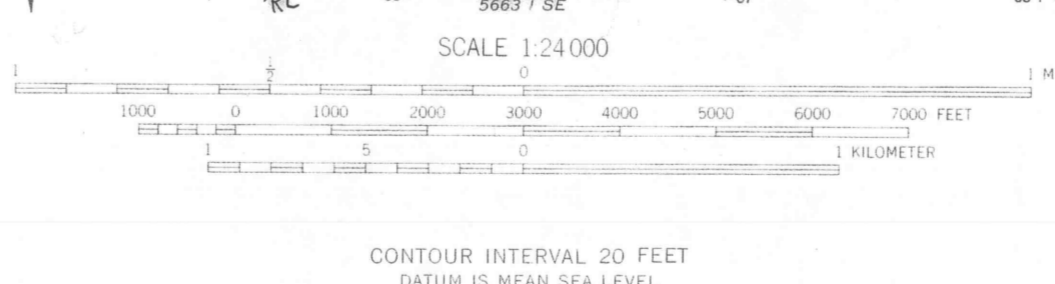
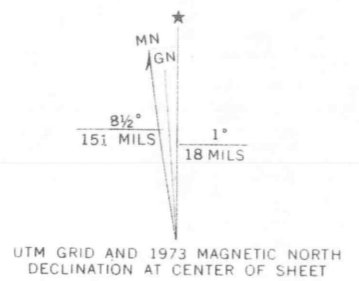
RC_q = Quartzite bedrock and colluvium undivided
Surfaces with low to steep slopes underlain by unweathered or weathered quartzite bedrock and thin (<6 feet), discontinuous deposits of colluvium.

R = Rock
Surfaces with steep to very steep slopes underlain by unweathered or weathered rock that is at or very close to the surface. Some colluvium may occur at the base of the slope.

● = Outcrop
Areas with continuous or discontinuous bedrock outcrop.



Mapped, edited, and published by the Geological Survey
Control by USGS and USC&GS
Topography from aerial photographs by photogrammetric methods. Aerial photographs taken 1952. Field check 1953.
Polyconic projection. 1927 North American datum
10,000-foot grid based on Pennsylvania coordinate system, south zone
1000-meter Universal Transverse Mercator grid ticks, zone 18, shown in blue
Red tint indicates area in which only landmark buildings are shown
Revisions shown in purple compiled in cooperation with State of Pennsylvania agencies from aerial photographs taken 1968 and 1973. This information not field checked



RED LION, PA.
N 3952.5—W 7630/7.5
1953
PHOTOREVISED 1968 AND 1973
AMS 5663 I NE—SERIES V831

THIS MAP COMPLIES WITH NATIONAL MAP ACCURACY STANDARDS
FOR SALE BY U. S. GEOLOGICAL SURVEY, RESTON, VIRGINIA 22092
A FOLDER DESCRIBING TOPOGRAPHIC MAPS AND SYMBOLS IS AVAILABLE ON REQUEST

**ADDITIONAL COPIES OF THIS REPORT CAN BE OBTAINED FROM:
PENNSYLVANIA GEOLOGICAL SURVEY
P. O. BOX 8453
HARRISBURG, PA 17105-8453**