

SURFICIAL GEOLOGY OF THE PENNSYLVANIA PART OF THE NEW FREEDOM 7.5' QUADRANGLE, MD-PA

**THIS REPORT HAS NOT BEEN REVIEWED
FOR CONFORMITY WITH THE PUBLICATION STANDARDS
OF THE PENNSYLVANIA GEOLOGICAL SURVEY.**

by **W. D. Sevon**
1996

Open-File Report 96-13

NEW FREEDOM QUADRANGLE
MARYLAND-PENNSYLVANIA
7.5 MINUTE SERIES (TOPOGRAPHIC)

UNITED STATES
DEPARTMENT OF THE INTERIOR
GEOLOGICAL SURVEY

UNITED STATES
DEPARTMENT OF THE ARMY
CORPS OF ENGINEERS

EXPLANATION

AF = Artificial Fill
Compacted to semi-compacted material used for fill. Composed of locally derived bedrock or surficial material.

A = Alluvium
Material underlies narrow to broad, flat-surfaced floodplains of perennial streams. Comprises stratified sand, silt, and clay in upper part; same plus gravel in lower part. Generally less than 10 feet thick.

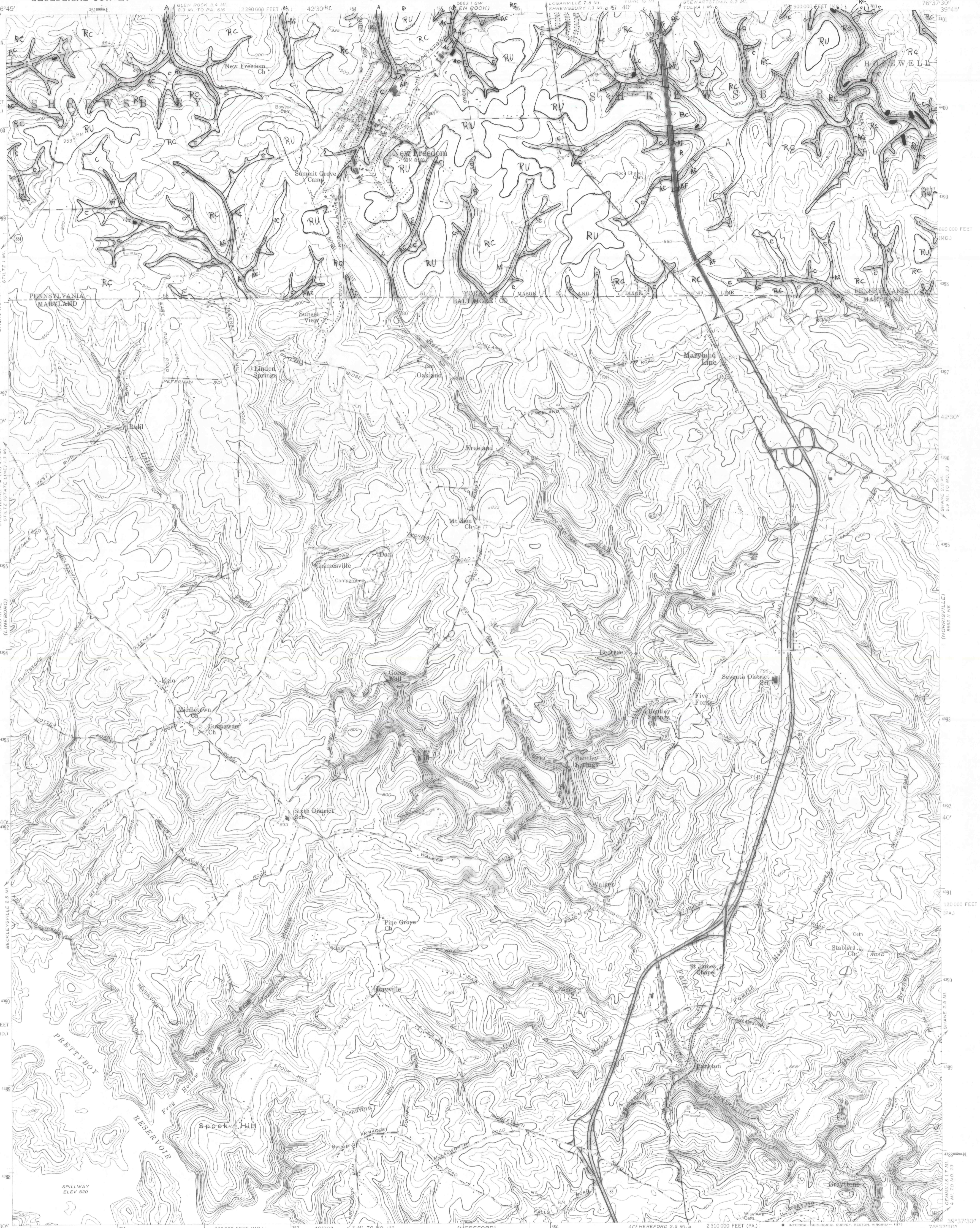
C = Colluvium
Colluvium is unsorted and unstratified to crudely stratified debris derived from underlying bedrock. Comprises fragments set in finer-grained matrix. Platy fragments in schist bedrock areas (RC). Mapped where greater than 6 feet thick.

AC = Alluvium and colluvium undivided
Alluvium and colluvium are mapped together where the valley in which they occur is too narrow to map the units separately at 1:24,000 scale.

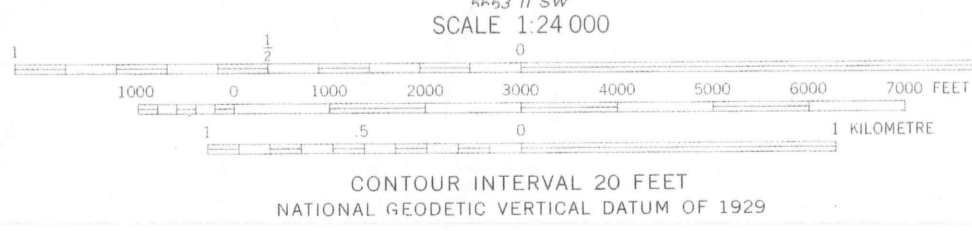
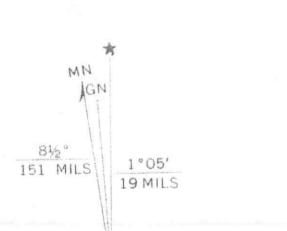
RC = Schist bedrock and colluvium undivided
Surfaces with low to steep slopes underlain by unweathered or weathered schist bedrock and thin (<6 feet), discontinuous deposits of colluvium.

RU = Rock upland
Nearly flat upland surface underlain usually by weathered schist bedrock, sometimes by unweathered schist bedrock. Little or no colluvium is present.

● = Outcrop
Areas with continuous or discontinuous bedrock outcrop.



Mapped by the Army Map Service
Edited and published by the Geological Survey
Control by USGS, USC&GS, USCE, and
U. S. Soil Conservation Service
Topography from aerial photographs by photogrammetric
methods. Aerial photographs taken 1943
Culture revised by the Geological Survey 1958
Polyconic projection. 1927 North American datum
10,000-foot grids based on Maryland coordinate system,
and Pennsylvania coordinate system, south zone
1000-metre Universal Transverse Mercator grid ticks,
zone 18, shown in blue
Unchecked elevations are shown in brown



ROAD CLASSIFICATION	
Heavy-duty	Light-duty
Medium-duty	Unimproved dirt
U.S. Route	State Route

NEW FREEDOM, MD.-PA.

N3937.5-W7637.5/7.5

1958
PHOTOREVISED 1974
AMS 5663 II NW-SERIES V633

THIS MAP COMPLIES WITH NATIONAL MAP ACCURACY STANDARDS
FOR SALE BY U. S. GEOLOGICAL SURVEY, RESTON, VIRGINIA 22092
A FOLDER DESCRIBING TOPOGRAPHIC MAPS AND SYMBOLS IS AVAILABLE ON REQUEST

Revisions shown in purple compiled by the Geological
Survey from aerial photographs taken 1974. This
information not field checked.

**ADDITIONAL COPIES OF THIS REPORT CAN BE OBTAINED FROM:
PENNSYLVANIA GEOLOGICAL SURVEY
P. O. BOX 8453
HARRISBURG, PA 17105-8453**