

**SURFICIAL GEOLOGY  
OF THE  
WAKEFIELD 7.5' QUADRANGLE, PA**

**Open-File Report 96-11**

WAKEFIELD QUADRANGLE  
PENNSYLVANIA—LANCASTER CO.  
7.5 MINUTE SERIES (TOPOGRAPHIC)

by **W. D. Sevon**  
1996

UNITED STATES  
DEPARTMENT OF THE INTERIOR  
GEOLOGICAL SURVEY

**EXPLANATION**

**A = Alluvium**  
Material underlies narrow to broad, flat-surfaced floodplains of perennial streams. Comprises stratified sand, silt, and clay in upper part; same plus gravel in lower part. Generally less than 10 feet thick.

**C = Colluvium**  
Colluvium is unsorted and unstratified to crudely stratified debris derived from underlying bedrock. Comprises fragments set in finer-grained matrix. Platy fragments in schist bedrock areas (RC). Mapped where greater than 6 feet thick.

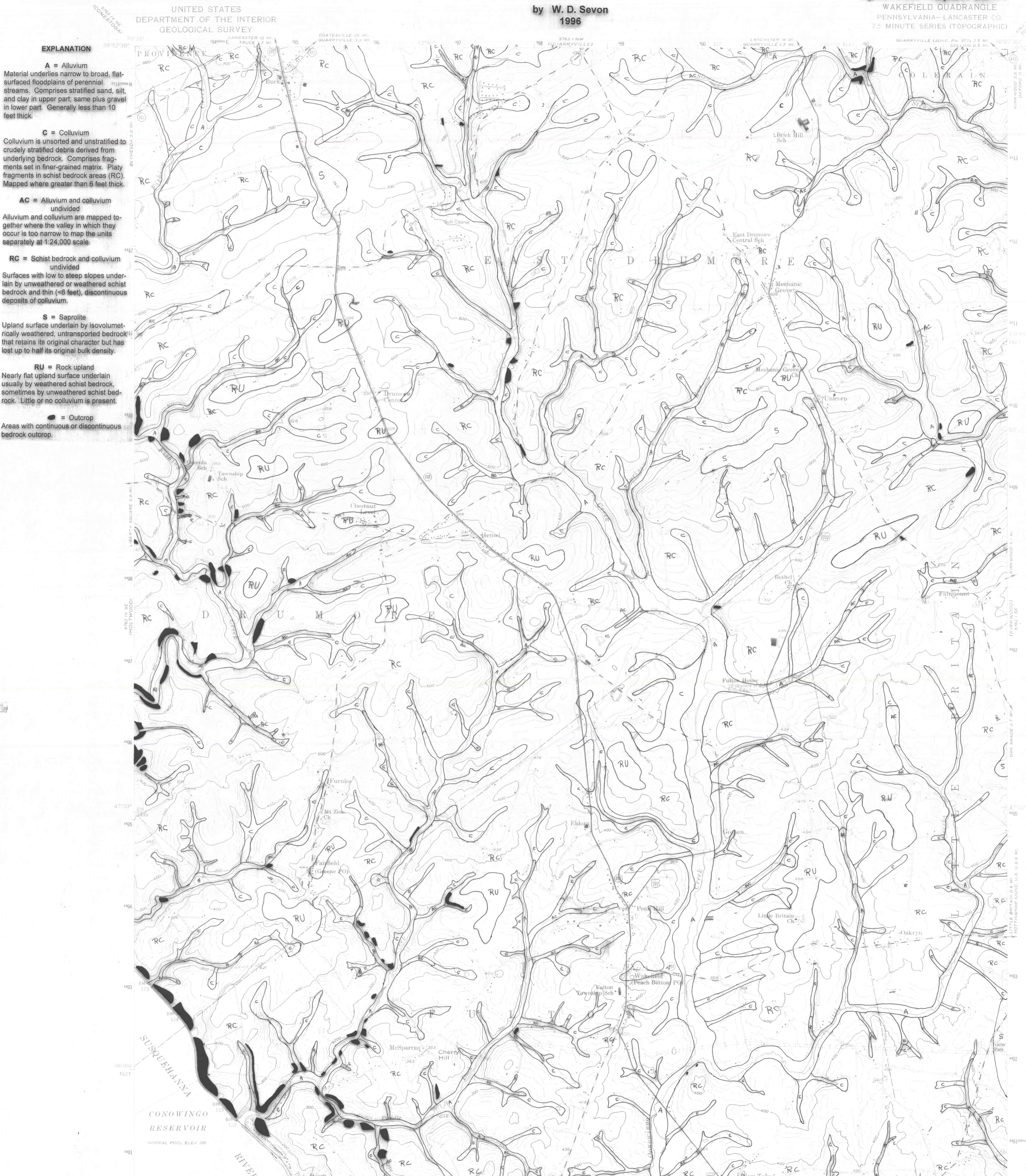
**AC = Alluvium and colluvium undivided**  
Alluvium and colluvium are mapped together where the valley in which they occur is too narrow to map the units separately at 1:24,000 scale.

**RC = Schist bedrock and colluvium undivided**  
Surfaces with low to steep slopes underlain by unweathered or weathered schist bedrock and thin (<6 feet), discontinuous deposits of colluvium.

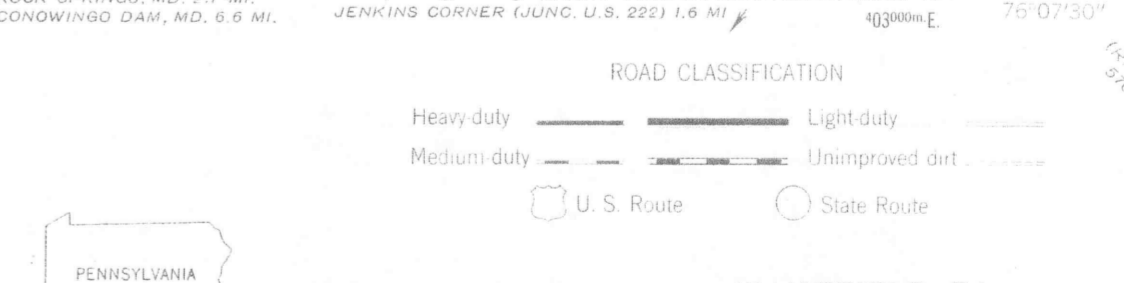
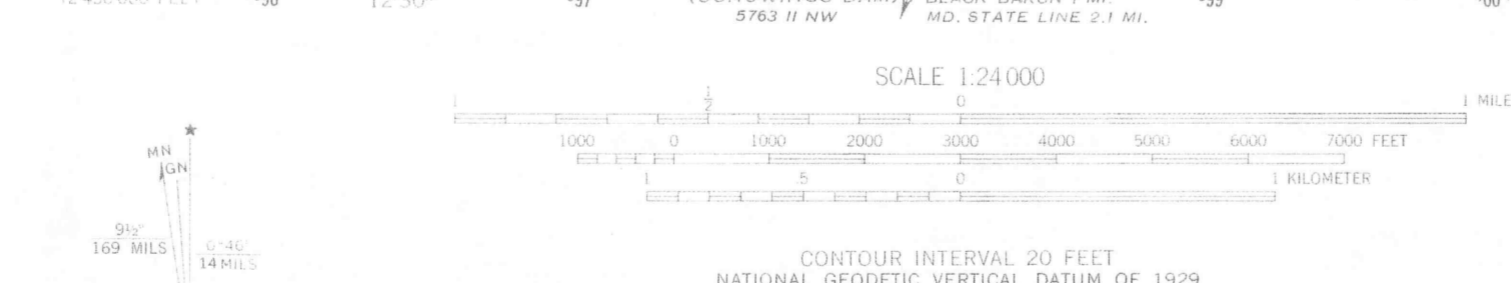
**S = Saprolite**  
Upland surface underlain by isovolumetrically weathered, untransported bedrock that retains its original character but has lost up to half its original bulk density.

**RU = Rock upland**  
Nearly flat upland surface underlain usually by weathered schist bedrock, sometimes by unweathered schist bedrock. Little or no colluvium is present.

**● = Outcrop**  
Areas with continuous or discontinuous bedrock outcrop.



Mapped, edited, and published by the Geological Survey  
Control by USGS, USCGS, USCE, and USCS  
Topography from aerial photographs by photogrammetric methods. Aerial photographs taken 1953. Field check 1955  
Polyconic projection. 1927 North American datum  
10,000-foot grid based on Pennsylvania coordinate system, south zone  
1000-meter Universal Transverse Mercator grid ticks, zone 18, shown in blue  
Revisions shown in purple compiled in cooperation with State of Pennsylvania agencies from aerial photographs taken 1969 and 1976. This information not field checked



THIS MAP COMPLIES WITH NATIONAL MAP ACCURACY STANDARDS  
FOR SALE BY U.S. GEOLOGICAL SURVEY, RESTON, VIRGINIA 22092  
A FOLDER DESCRIBING TOPOGRAPHIC MAPS AND SYMBOLS IS AVAILABLE ON REQUEST

1955  
PHOTOREVISED 1969 AND 1976  
AMS 5763 1 SW—SERIES Y831

**ADDITIONAL COPIES OF THIS REPORT CAN BE OBTAINED FROM:  
PENNSYLVANIA GEOLOGICAL SURVEY  
P. O. BOX 8453  
HARRISBURG, PA 17105-8453**