

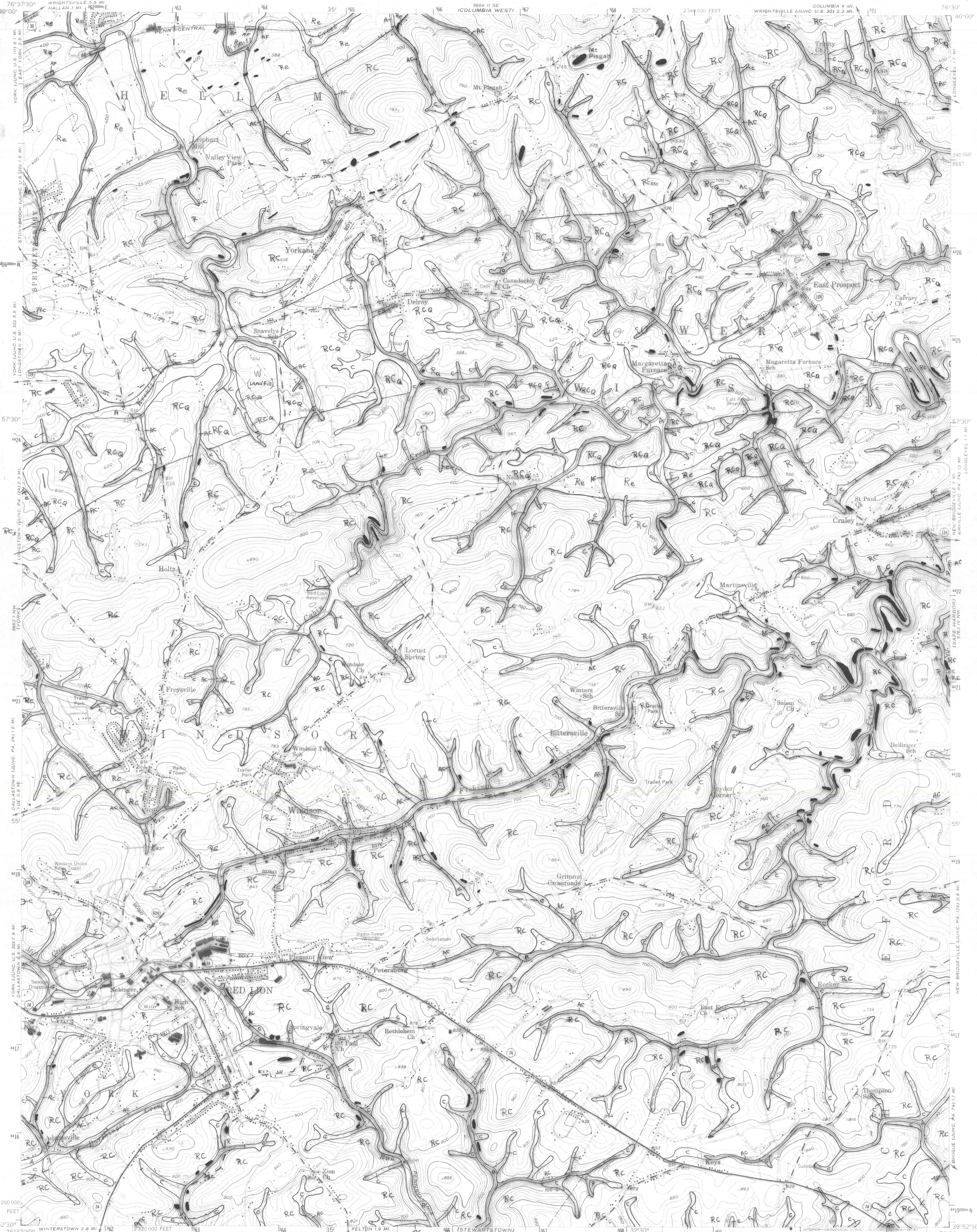
# SURFICIAL GEOLOGY OF THE RED LION 7.5' QUADRANGLE, PA

by W. D. Sevon  
1996

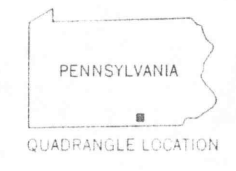
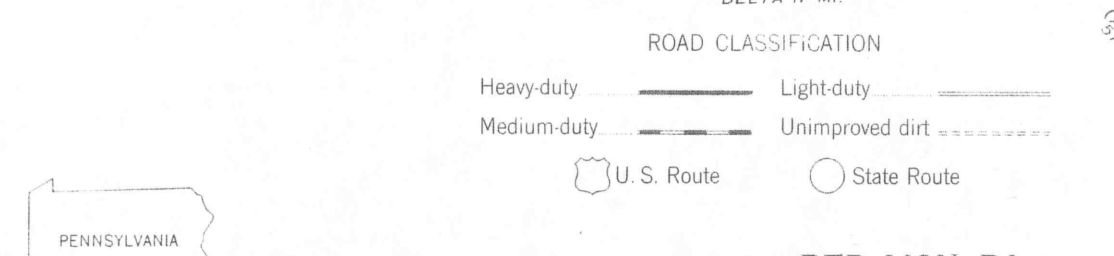
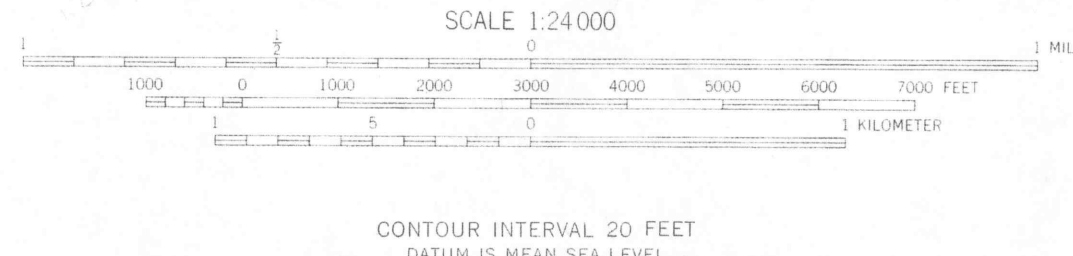
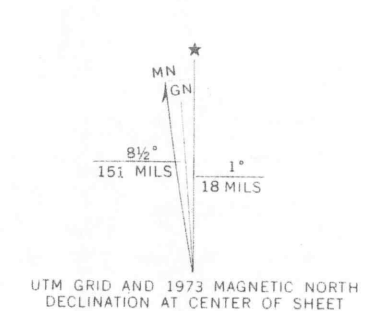
RED LION QUADRANGLE  
PENNSYLVANIA—YORK CO.  
7.5 MINUTE SERIES (TOPOGRAPHIC)

UNITED STATES  
DEPARTMENT OF THE INTERIOR  
GEOLOGICAL SURVEY

- EXPLANATION**
- AF = Artificial Fill**  
Compacted to semi-compacted material used for fill. Composed of locally derived bedrock or surficial material.
  - A = Alluvium**  
Material underlies narrow to broad, flat-surfaced floodplains of perennial streams. Comprises stratified sand, silt, and clay in upper part; same plus gravel in lower part. Generally less than 10 feet thick.
  - C = Colluvium**  
Colluvium is unsorted and unstratified to crudely stratified debris derived from underlying bedrock. Comprises fragments set in finer-grained matrix. Platy fragments in schist bedrock areas (RC); more sand in quartzite bedrock areas (RC<sub>q</sub>). Mapped where greater than 6 feet thick.
  - AC = Alluvium and colluvium undivided**  
Alluvium and colluvium are mapped together where the valley in which they occur is too narrow to map the units separately at 1:24,000 scale.
  - RC = Schist bedrock and colluvium undivided**  
Surfaces with low to steep slopes underlain by unweathered or weathered schist bedrock and thin (<6 feet), discontinuous deposits of colluvium.
  - RC<sub>q</sub> = Quartzite bedrock and colluvium undivided**  
Surfaces with low to steep slopes underlain by unweathered or weathered quartzite bedrock and thin (<6 feet), discontinuous deposits of colluvium.
  - R = Rock**  
Surfaces with steep to very steep slopes underlain by unweathered or weathered rock that is at or very close to the surface. Some colluvium may occur at the base of the slope.
  - = Outcrop**  
Areas with continuous or discontinuous bedrock outcrop.



Maped, edited, and published by the Geological Survey  
Control by USGS and USC&GS  
Topography from aerial photographs by photogrammetric methods. Aerial photographs taken 1952. Field check 1953  
Polyconic projection. 1927 North American datum  
10,000-foot grid based on Pennsylvania coordinate system, south zone  
1,000-meter Universal Transverse Mercator grid ticks, zone 18, shown in blue  
Red tint indicates area in which only landmark buildings are shown  
Revisions shown in purple compiled in cooperation with State of Pennsylvania agencies from aerial photographs taken 1968 and 1973. This information not field checked



RED LION, PA.  
N 3952.5-W 7630/7.5  
1953  
PHOTOREVISED 1968 AND 1973  
AMS 5663 1 NE-SERIES V831

**ADDITIONAL COPIES OF THIS REPORT CAN BE OBTAINED FROM:  
PENNSYLVANIA GEOLOGICAL SURVEY  
P. O. BOX 8453  
HARRISBURG, PA 17105-8453**