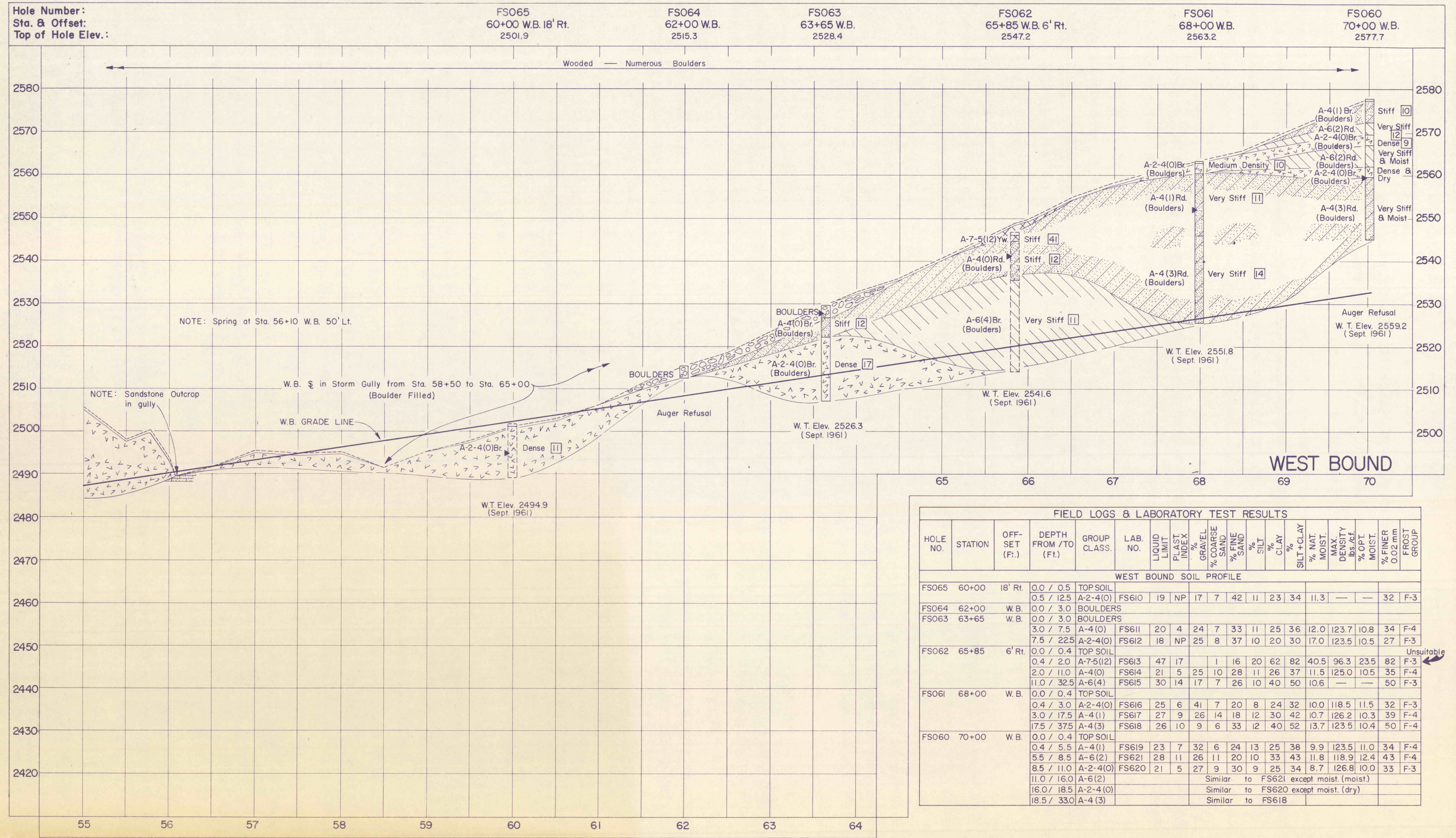


DUAL PROFILE



FIELD LOGS & LABORATORY TEST RESULTS																		
HOLE NO.	STATION	OFF-SET (Ft.)	DEPTH FROM / TO (Ft.)	GROUP CLASS.	LAB. NO.	LIQUID LIMIT	PLAST. INDEX	% GRAVEL	% COARSE SAND	% FINE SAND	% SILT	% CLAY	SILT+CLAY	% NAT. MOIST.	MAX. DENSITY lbs./cft.	% OPT. MOIST.	% FINER 0.02 mm	FROST GROUP
WEST BOUND SOIL PROFILE																		
FSO65	60+00	18' Rt.	0.0 / 0.5	TOP SOIL														
			0.5 / 12.5	A-2-4(O)	FS610	19	NP	17	7	42	11	23	34	11.3	—	—	32	F-3
FSO64	62+00	W.B.	0.0 / 3.0	BOULDERS														
FSO63	63+65	W.B.	0.0 / 3.0	BOULDERS														
			3.0 / 7.5	A-4(O)	FS611	20	4	24	7	33	11	25	36	12.0	123.7	10.8	34	F-4
			7.5 / 22.5	A-2-4(O)	FS612	18	NP	25	8	37	10	20	30	17.0	123.5	10.5	27	F-3
FSO62	65+85	6' Rt.	0.0 / 0.4	TOP SOIL														
			0.4 / 2.0	A-7-5(12)	FS613	47	17		1	16	20	62	82	40.5	96.3	23.5	82	F-3
			2.0 / 11.0	A-4(O)	FS614	21	5	25	10	28	11	26	37	11.5	125.0	10.5	35	F-4
			11.0 / 32.5	A-6(4)	FS615	30	14	17	7	26	10	40	50	10.6	—	—	50	F-3
FSO61	68+00	W.B.	0.0 / 0.4	TOP SOIL														
			0.4 / 3.0	A-2-4(O)	FS616	25	6	41	7	20	8	24	32	10.0	118.5	11.5	32	F-3
			3.0 / 17.5	A-4(1)	FS617	27	9	26	14	18	12	30	42	10.7	126.2	10.3	39	F-4
			17.5 / 37.5	A-4(3)	FS618	26	10	9	6	33	12	40	52	13.7	123.5	10.4	50	F-4
FSO60	70+00	W.B.	0.0 / 0.4	TOP SOIL														
			0.4 / 5.5	A-4(1)	FS619	23	7	32	6	24	13	25	38	9.9	123.5	11.0	34	F-4
			5.5 / 8.5	A-6(2)	FS621	28	11	26	11	20	10	33	43	11.8	118.9	12.4	43	F-4
			8.5 / 11.0	A-2-4(O)	FS620	21	5	27	9	30	9	25	34	8.7	126.8	10.0	33	F-3
			11.0 / 16.0	A-6(2)										Similar to FS621 except moist. (moist)				
			16.0 / 18.5	A-2-4(O)										Similar to FS620 except moist. (dry)				
			18.5 / 33.0	A-4(3)										Similar to FS618				

Unsuitable