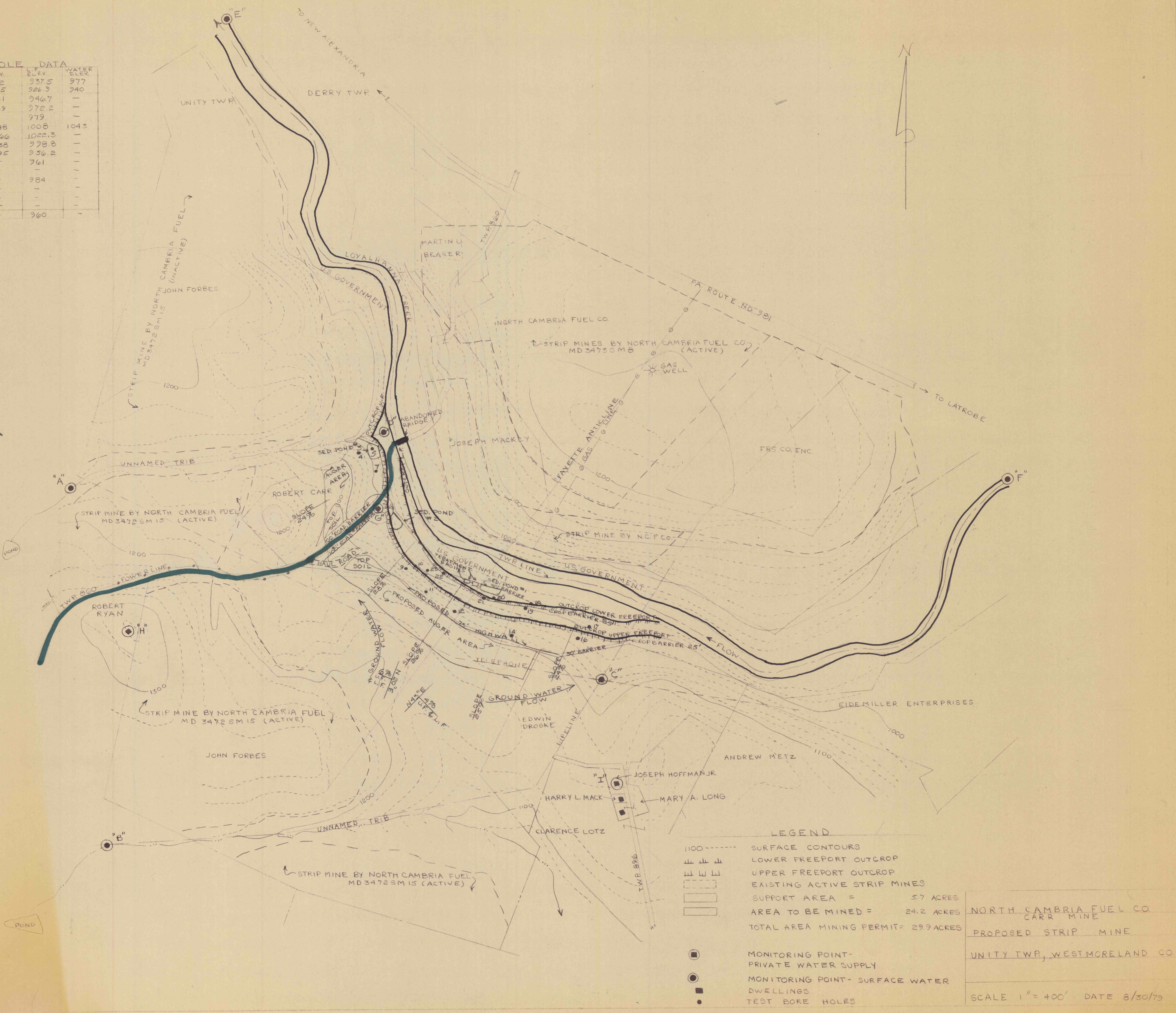


TEST HOLE DATA			
HOLE NO.	SURFACE ELEV.	U.F. ELEV.	WATER ELEV.
4	1020	962	937.5
5	980	965	926.9
7	990	981	946.7
9	1035	1009	972.2
10	1010	-	979
11	1070	1048	1008
12	1080	1066	1022.3
14	1080	1038	998.8
16	1020	995	956.2
17	987	-	961
18	980	-	-
19	1003	-	984
20	995	-	-
21	1005	-	-
22	980	-	-
23	995	-	960



- LEGEND**
- 1100 - - - - SURFACE CONTOURS
 - ▬▬▬▬ LOWER FREEPORT OUTCROP
 - ▬▬▬▬ UPPER FREEPORT OUTCROP
 - ▭▭▭▭ EXISTING ACTIVE STRIP MINES
 - ▭▭▭▭ SUPPORT AREA = 5.7 ACRES
 - ▭▭▭▭ AREA TO BE MINED = 24.2 ACRES
 - ▭▭▭▭ TOTAL AREA MINING PERMIT = 29.9 ACRES
 - MONITORING POINT - PRIVATE WATER SUPPLY
 - MONITORING POINT - SURFACE WATER
 - DWELLINGS
 - TEST BORE HOLES

NORTH CAMBRIA FUEL CO.
CARR MINE

PROPOSED STRIP MINE

UNITY TWP, WESTMORELAND CO.

SCALE 1" = 400' DATE 8/30/79