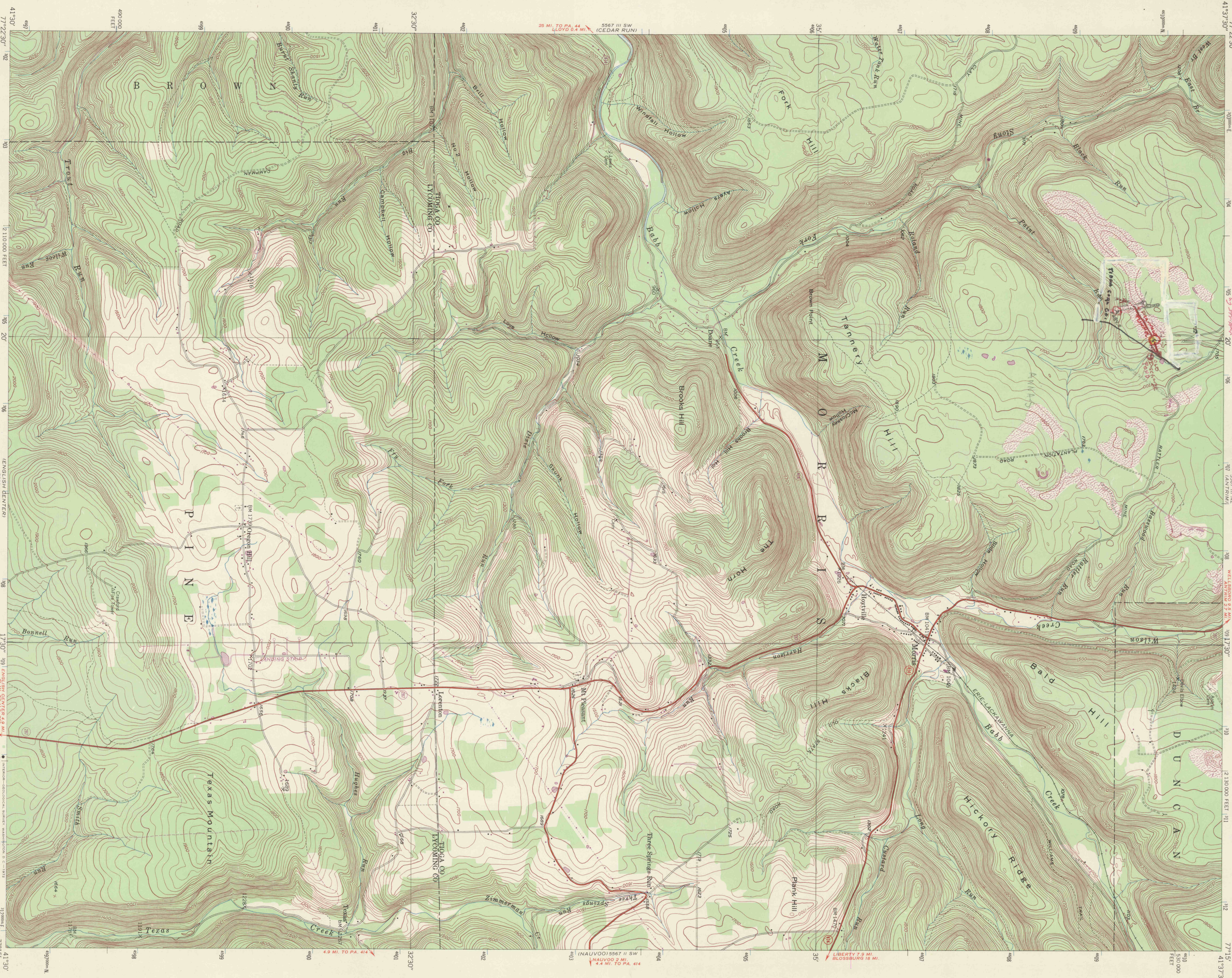


*5th TPOCA Quad to
MSP 1907 - Morris
Standard 0811214 400 North
to 1500 road left
by station 20*



41°30' N
77°23'30" W
490 000
FET

12 110 000 FEET
ENGLISH DENVER
5666 1/4 IN

17°30' 109 150 150 250
17°30' 109 150 150 250

41°30' N
77°15' W
490 000
FET

Control by USGS and USCGS
Topography from aerial photographs by multiplex methods
Aerial photographs taken 1944. Field check 1946
Polyconic projection, 1927 North American datum
10,000-foot grid based on Pennsylvania coordinate system,
north zone
1000-meter Universal Transverse Mercator grid ticks.
Zone 18, shown in blue
Revisions shown in purple compiled in cooperation with State of
Pennsylvania agencies from aerial photographs taken 1971. This
information not field checked

1:62,500
1:25,000
1:12,500
1:6,250
1:3,125
1:1,562.5

SCALE 1:24,000
CONTOUR INTERVAL 20 FEET
DATUM IS MEAN SEA LEVEL

1 MILE
1:62,500
1:25,000
1:12,500
1:6,250
1:3,125
1:1,562.5

ROAD CLASSIFICATION
HARD SURFACE ALL WEATHER ROADS
HEAVY DUTY
MEDIUM DUTY
LOOSE SURFACE, GRADED, OR NARROW
U. S. ROUTE

ROAD CLASSIFICATION
DRY WEATHER ROADS
IMPROVED DIRT
UNIMPROVED DIRT
STATE ROUTE

MORRIS, PA.
N4130-W7715/7.5
PHOTO/REVISED 1971
AMS 5987 III SE--SERIES V831

DIXONS
STATIONER
301 MARKET STREET
LENDING PA. 17040

41°30' N
77°23'30" W
490 000
FET

12 110 000 FEET
ENGLISH DENVER
5666 1/4 IN

17°30' 109 150 150 250
17°30' 109 150 150 250

41°30' N
77°15' W
490 000
FET

DIXONS
STATIONER
301 MARKET STREET
LENDING PA. 17040