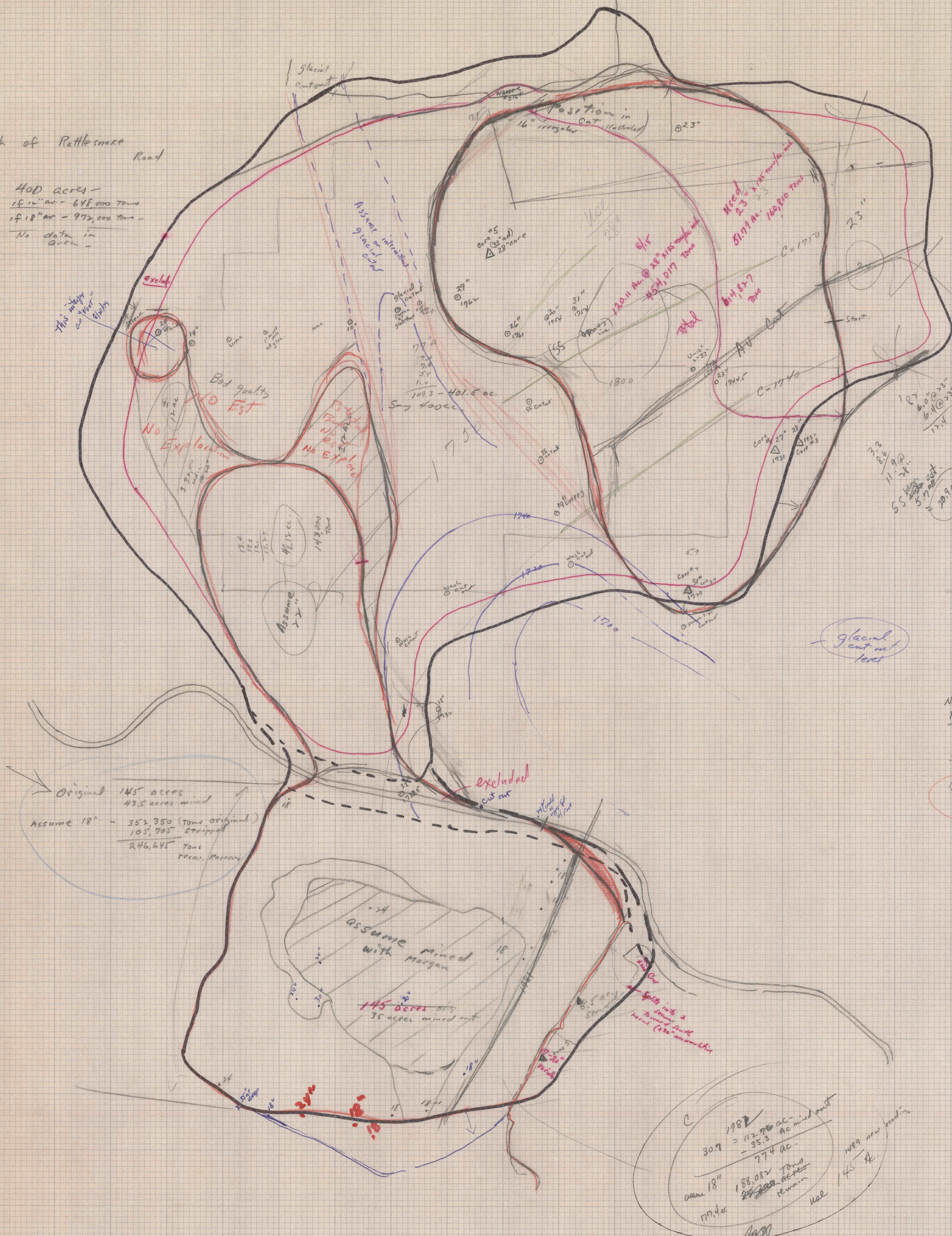


C' - "CANNEL" vein = Middle Kittanning Coal

North of Rattlesnake Road

400 acres -
 if 18" air - 648,000 tons
 if 18" air - 972,000 tons
 No data in area -



Conversion factor
 $12000 \approx 3.6731 \text{ Ac. per } 10'$
 $46.3' \square \quad 47.3' \square \quad 17.1' @ 25'$
 $32.7' @ 28'$
 $46.8'$
 17.19 ac
 $16.8'$
 $17.4'$

Revisions - August 1979

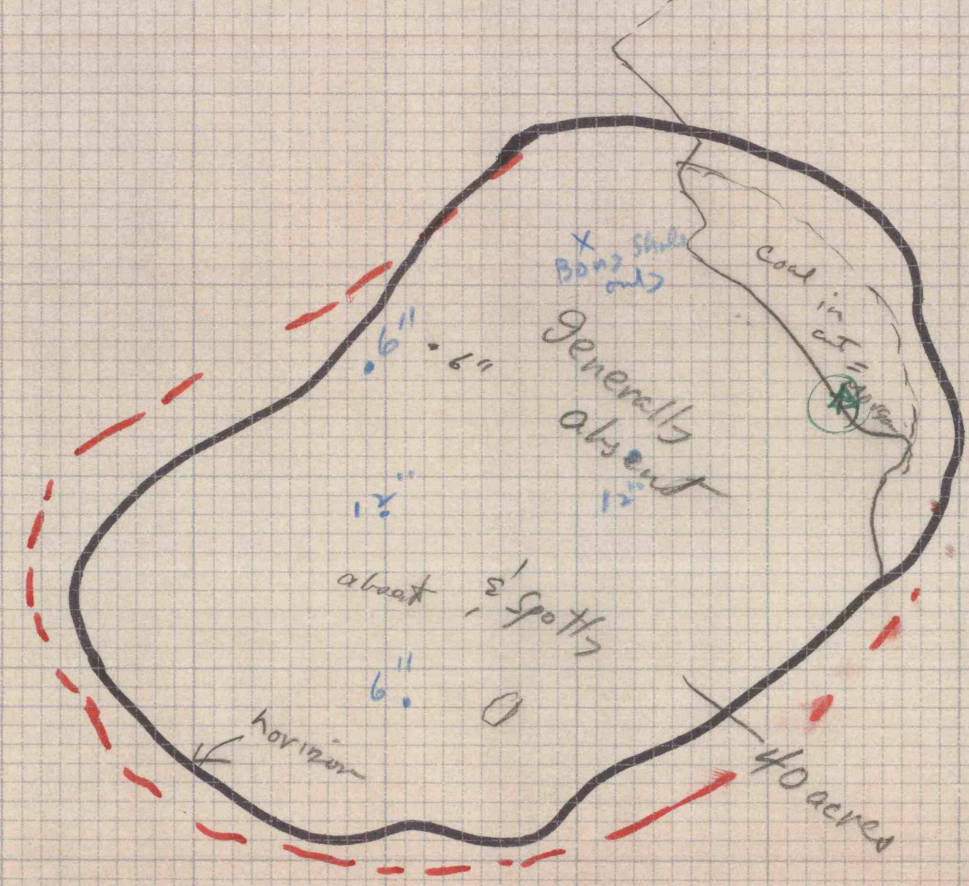
Northern Tract	171.9 Ac	51.79 Ac @ 23"	169,210
Proved		120.11 Ac @ 28"	434,017
		171.90 Ac	614,827
Southern Tract	101.5 Ac	assume 18" air	246,645
Indicated			861,492
N. of Road	72 Ac	20-22" assumed	209,000
			1,061,492
			Tons Middle K.

Drillings by Mass almost out 9/2/79
 Say 900,000 Tons

Original 145 acres
 43.5 acres mined
 Assume 18" - 352,350 (Tons original)
 105,705 (Striped)
 246,645 Tons
 Peas, Peasery

Assume mined with Morgan
 145 acres air
 35 acres mined out

1982
 $30.9 = 112.77 \text{ ac.} - 35.3 \text{ ac. mined out}$
 $= 77.4 \text{ ac.}$
 Assume 18" 188,082 Tons
 177.4 ac
 145 ac



Thickness of Reserve
 C. Coal (middle K.)