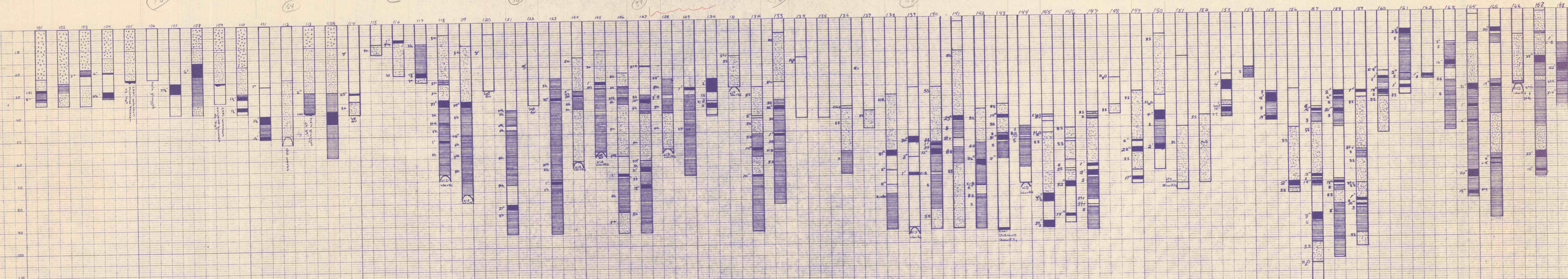


Handwritten notes for test holes TH-101 through TH-167, detailing geological observations and measurements. Each entry includes a hole number and a list of layers with their thicknesses and descriptions.

Examples of entries:

- TH-101:** 0 - Dirt, 22 - Sandstone, 27 - Coal 1", 35 - Black shale, 31 - Coal 6", 32 - Sandstone, 34 - TD
- TH-102:** 0 - Gravel, 24 - Dark shale, 25 - Sandstone, 26 - TD
- TH-103:** 0 - Cover, 15 - Black shale, 20 - Coal 3", 25 - Sandstone, 26 - TD
- TH-104:** 0 - Cover, 13 - Sandstone, 14 - Clay, 15 - Coal 2", 24 - Coal 2 1/2", 20 - TD
- TH-105:** 0 - Cover, 10 - Sandstone, 15 - Water, 23 - Coal - with out
- TH-106:** 0 - Cover, 4 - Sandstone, 13 - Water, 23 - Shale - hole plugged
- TH-107:** 0 - Cover, 10 - Water, 25 - Coal 1/4", 24 - TD
- TH-108:** 0 - Cover, 16 - Sandstone, 14 - Coal 6", 23 - Shale, 25 - Sandstone, 24 - TD
- TH-109:** 0 - Cover, 8 - Water, 11 - Sandstone, 25 - Coal with out, 24 - TD
- TH-110:** 0 - Cover, 17 - Water, 18 - Sandstone, 27 - Sandstone, 30 - Soft material, 30 - Black shale, 21 - Coal 1 1/2", 26 - Coal 1 1/2"
- TH-111:** 0 - Cover, 47 - Coal 1", 40 - Coal 3 1/2", 44 - Coal 1 1/4"
- TH-112:** 0 - Cover, 24 - Sandstone, 45 - Soft air, 53 - Old works
- TH-113:** 0 - Dirt, 10 - Sandstone, 30 - Coal 2", 51 - Gray shale, 56 - Shale, 24 - Hole covered
- TH-114:** 0 - Gravel, 30 - Coal 3 1/2", 34 - Sandstone, 40 - Soft air
- TH-115:** 0 - Cover, 9 - Sandstone, 4 - Water, 13 - TD
- TH-116:** 0 - Cover, 7 - Coal 1", 10 - Claystone, 23 - Sandstone, 23 - TD
- TH-117:** 0 - Cover, 9 - Shale, 25 - Coal 1 1/2", 24 - Claystone, 26 - Sandstone, 26 - TD
- TH-118:** 0 - Cover, 16 - Sandstone, 21 - Coal 2", 21 - Shale, 23 - Coal shale, 23 - Shale, 23 - Shale, 23 - Sandstone, 23 - Sandstone, 23 - Old works
- TH-119:** 0 - Cover, 10 - Sandstone, 35 - Coal 2 1/2", 38 - Shale, 50 - Coal shale, 29 - Shale, 76 - Old works
- TH-120:** 0 - Cover, 5 - Gravel, 30 - Soft air
- TH-121:** 0 - Cover, 34 - Coal shale, 40 - Shale, 46 - Coal shale, 48 - Coal shale, 47 - Shale, 72 - Coal shale, 72 - Shale, 81 - Coal 2", 83 - Shale, 94 - TD
- TH-122:** 0 - Gravel, 27 - Soft air
- TH-123:** 0 - Cover, 25 - Shale, 34 - Coal 10", 35 - Shale, 63 - Coal shale, 63 - Shale, 71 - Coal 1", 72 - Shale, 73 - Shale, 74 - TD
- TH-124:** 0 - Cover, 16 - Sandstone, 21 - Coal 2", 21 - Shale, 23 - Coal shale, 23 - Shale, 23 - Shale, 23 - Sandstone, 23 - Sandstone, 23 - Old works
- TH-125:** 0 - Cover, 13 - Sandstone, 27 - Black shale, 27 - Coal 1" (Dirty), 28 - Shale, 54 - Soft air
- TH-126:** 0 - Cover, 23 - Sandstone, 24 - Black shale, 34 - Coal shale, 34 - Shale, 54 - Coal 3 1/2", 41 - Shale, 42 - Coal shale, 44 - Shale, 52 - Coal 1", 53 - Shale, 60 - Coal shale, 60 - Claystone, 64 - Coal 1", 64 - Shale, 85 - Sandstone, 94 - TD
- TH-127:** 0 - Cover, 20 - Coal shale, 33 - Black shale, 37 - Coal 1", 37 - Shale, 41 - Sandstone, 62 - Coal shale, 65 - Coal 2", 73 - Coal 1 1/2", 75 - Shale, 94 - TD
- TH-128:** 0 - Cover, 25 - Coal 2 1/2", 30 - Shale, 33 - Coal 2" (Dirty), 35 - Shale, 41 - Sandstone, 57 - Old works
- TH-129:** 0 - Cover, 22 - Clay, 30 - Coal 1", 33 - Shale, 64 - TD
- TH-130:** 0 - Cover, 21 - Soft material, 53 - Coal 30", 57 - Coal 2", 59 - Coal 1", 60 - Shale, 69 - Black shale, 70 - Shale, 82 - Sandstone, 84 - TD
- TH-131:** 0 - Cover, 16 - Coal shale, 16 - Sandstone, 30 - Old works
- TH-132:** 0 - Cover, 20 - Sandstone, 43 - Coal 2", 44 - Sandstone, 44 - Sandstone, 51 - Shale, 57 - Coal 1 1/2", 59 - Shale, 61 - Sandstone, 64 - Coal 10", 70 - Shale, 84 - TD
- TH-133:** 0 - Cover, 6 - Sandstone, 24 - Coal shale, 26 - Shale, 26 - Coal 2 1/2", 40 - Shale, 51 - Coal 1", 52 - Shale, 58 - Coal 1" (Dirty), 59 - Shale, 62 - Old works
- TH-134:** 0 - Gravel, 44 - TD
- TH-135:** 0 - Gravel, 44 - TD
- TH-136:** 0 - Gravel, 24 - Clay, 40 - Sandstone, 55 - Shale, 64 - TD
- TH-137:** 0 - Gravel, 44 - Sandstone, 44 - TD
- TH-138:** 0 - Gravel, 44 - TD
- TH-139:** 0 - Cover, 21 - Soft material, 53 - Coal 30", 57 - Coal 2", 59 - Coal 1", 60 - Shale, 69 - Black shale, 70 - Shale, 82 - Sandstone, 84 - TD
- TH-140:** 0 - Gravel, 21 - Sandstone, 25 - Black shale, 55 - Coal 1", 57 - Shale, 59 - Coal 2", 60 - Shale, 69 - Black shale, 70 - Shale, 81 - Coal shale, 84 - Coal 2", 85 - Shale, 85 - TD
- TH-141:** 0 - Sandstone, 44 - Coal 2 1/2", 46 - Shale, 54 - Coal shale, 58 - Black shale, 68 - Sandstone, 69 - TD
- TH-142:** 0 - Gravel, 41 - Sandstone, 54 - Coal 2 1/2", 63 - Shale, 66 - Shale, 74 - Coal/Bone 6", 79 - Black shale, 81 - Shale, 84 - TD
- TH-143:** 0 - Gravel, 24 - Sandstone, 44 - Coal 1" (Group), 45 - Sandstone, 52 - Shale, 53 - Coal 2 1/2", 56 - Shale, 63 - Shale, 74 - Coal with out
- TH-144:** 0 - Gravel, 44 - Black shale, 54 - Shale, 74 - Old works
- TH-145:** 0 - Gravel, 44 - Clay, 45 - Coal shale, 47 - Clay, 62 - Water, 62 - Sandstone, 70 - Coal 2 1/2", 91 - Coal 2 1/2", 94 - TD
- TH-146:** 0 - Gravel, 50 - Sandstone, 57 - Shale, 56 - Sandstone, 64 - Shale, 68 - Sandstone, 73 - Coal 3 1/2", 88 - Coal 1 1/2", 93 - Shale, 94 - TD
- TH-147:** 0 - Gravel, 43 - Sandstone, 45 - Shale, 45 - Sandstone, 66 - Coal 1", 60 - Coal 2 1/2", 75 - Shale, 75 - Coal shale, 84 - Coal 2", 85 - Shale, 85 - TD
- TH-148:** 0 - Cover, 28 - Water, 40 - Sandstone, 44 - TD
- TH-149:** 0 - Gravel, 24 - Sandstone, 55 - Coal 6", 54 - Coal 2 1/2", 61 - Sandstone, 72 - Coal 1 1/2", 75 - TD (plugged hole)
- TH-150:** 0 - Cover, 9 - Sandstone, 26 - Water, 43 - Coal 4", 47 - Shale, 54 - Coal 2 1/2", 64 - TD
- TH-151:** 0 - Gravel, 14 - Mud, 50 - Sandstone, 75 - Coal with out, 76 - TD
- TH-152:** 0 - Gravel, 45 - Sandstone, 75 - TD - mud
- TH-153:** 0 - Gravel, 21 - Coal 1 1/2", 30 - Coal 5 1/2", 41 - Coal 1 1/2", 44 - Sandstone
- TH-154:** 0 - Gravel, 24 - Shale, 29 - Soft air
- TH-155:** 0 - Gravel, 35 - Shale, 36 - Coal 4 1/2", 40 - Shale, 46 - Coal 1 1/2", 48 - Shale, 48 - TD
- TH-156:** 0 - Gravel, 21 - Sandstone, 25 - Coal 2 1/2", 26 - Sandstone, 27 - TD (plugged hole)
- TH-157:** 0 - Gravel, 42 - Black shale, 42 - Coal 16", 43 - Shale, 45 - Shale, 46 - Sandstone, 46 - Coal 15", 74 - Shale, 75 - Coal 1 1/2", 77 - Shale, 78 - Coal 3 1/2", 82 - Shale, 82 - Sandstone, 114 - TD
- TH-158:** 0 - Gravel, 35 - Coal 2 1/2", 34 - Coal 6", 34 - Shale, 43 - Coal 2 1/2", 45 - Shale, 51 - Sandstone, 74 - Shale, 75 - Coal 1 1/2", 77 - Shale, 79 - Sandstone, 88 - Shale, 104 - TD
- TH-159:** 0 - Cover, 35 - Coal 1", 28 - Sandstone, 61 - Coal shale, 62 - Shale, 65 - Sandstone, 76 - Coal shale, 83 - Coal 1" (dirty), 84 - Shale, 85 - Coal 10", 87 - Shale, 98 - Sandstone, 104 - TD
- TH-160:** 0 - Cover, 24 - Coal 6" (Group), 24 - Coal 1", 30 - Black shale, 35 - Coal 1 1/2", 37 - Shale, 38 - Sandstone, 54 - TD (mud)
- TH-161:** 0 - Cover, 8 - Coal 2 1/2" (Group), 11 - Shale, 34 - Coal 2", 36 - Shale, 33 - Coal 1", 34 - Shale, 37 - Sandstone, 37 - TD
- TH-162:** 0 - Spoil pile, 28 - Coal 1", 24 - Shale, 30 - TD
- TH-163:** 0 - Gravel, 14 - Coal 3 1/4", 15 - Shale, 26 - Coal 1 1/2", 24 - Shale, 26 - Black shale/coal 5", 31 - Shale, 40 - Coal shale, 52 - Sandstone, 63 - Coal 2 1/2", 66 - Shale, 71 - Coal 10", 72 - Shale, 74 - Sandstone TD
- TH-164:** 0 - Cover, 2 - Sandstone, 10 - Coal shale, 14 - Sandstone, 23 - Coal 2 1/2", 42 - Shale, 43 - Coal 6", 50 - Shale, 71 - Coal 4 1/2", 75 - Shale, 80 - Coal 1 1/2", 83 - TD
- TH-165:** 0 - Cover, 8 - Coal 30", 11 - Shale, 33 - Coal 1 1/2", 35 - Shale, 46 - Sandstone, 64 - Shale, 66 - Coal 6", 68 - Coal 6", 68 - Coal shale, 80 - Shale, 92 - Sandstone TD
- TH-166:** 0 - Cover, 12 - Sandstone, 22 - Shale, 33 - Old works
- TH-167:** 0 - Cover, 1 - Sandstone, 10 - Shale, 11 - Sandstone, 21 - Coal 3 1/2", 24 - Shale, 30 - Sandstone, 32 - Shale, 35 - Coal shale, 24 - Shale, 40 - Coal shale, 40 - Shale, 52 - Sandstone, 63 - Coal 2 1/2", 66 - Shale, 71 - Coal 10", 72 - Shale, 74 - Sandstone TD
- TH-168:** 0 - Gravel, 15 - Coal/Bone 1", 21 - Shale, 24 - Coal 4 1/2", 28 - Shale, 32 - Coal shale, 32 - Shale, 34 - Coal 3 1/4", 38 - Shale, 42 - Sandstone, 42 - TD



NPSEG COAL EVALUATION
 S & S Coal Company
 Anna S Complex
 Test Hole Profiles
 Vertical Scale 1" = 30 feet
 Prepared July-August 1974
 under the direction of

Byron R. [Signature]