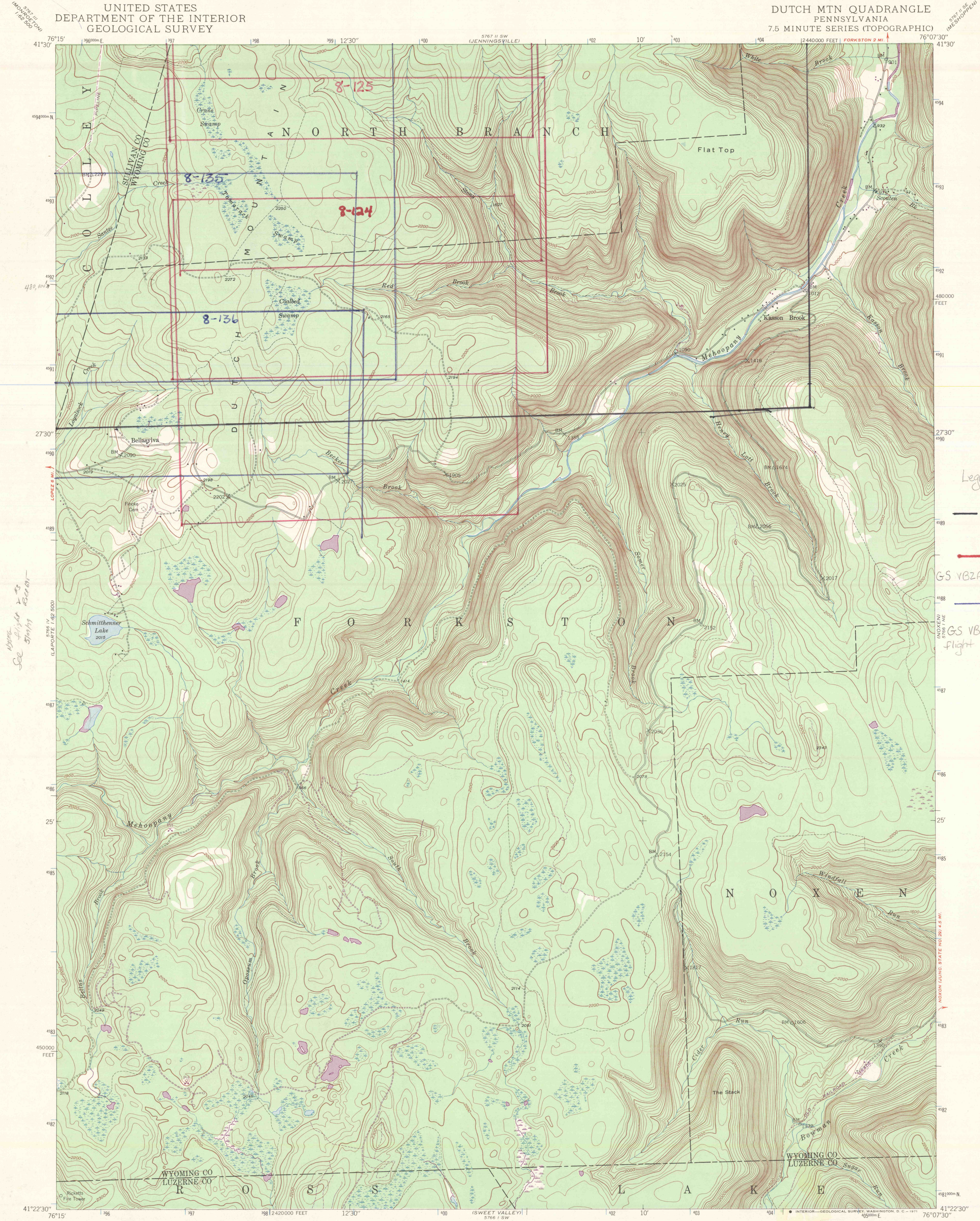


UNITED STATES  
DEPARTMENT OF THE INTERIOR  
GEOLOGICAL SURVEY

DUTCH MTN QUADRANGLE  
PENNSYLVANIA  
7.5 MINUTE SERIES (TOPOGRAPHIC)



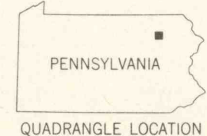
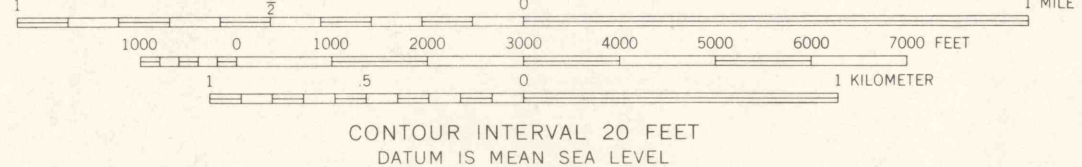
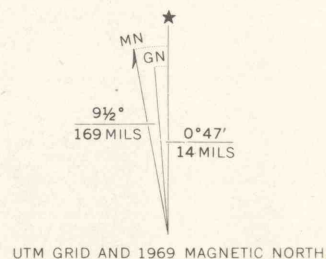
Legend

project area

8-124  
8-125  
8-126  
GS VBZA flight line

8-132  
8-136  
GS VBZA flight line

Mapped, edited, and published by the Geological Survey  
Control by USGS and USC&GS  
Topography from aerial photographs by multiplex methods  
Aerial photographs taken 1942. Field check 1946  
Polyconic projection. 1927 North American datum  
10000 foot grid based on Pennsylvania coordinate system,  
North zone  
1000-meter Universal Transverse Mercator grid ticks,  
zone 18, shown in blue  
Revisions shown in purple compiled from aerial  
photographs taken 1969. This information not  
field checked



ROAD CLASSIFICATION  
Light-duty ——— Unimproved dirt ———

DUTCH MTN., PA.  
N4122.5—W7607.5/7.5

1946  
PHOTOREVISED 1969  
AMS 5766 1 NW—SERIES V831