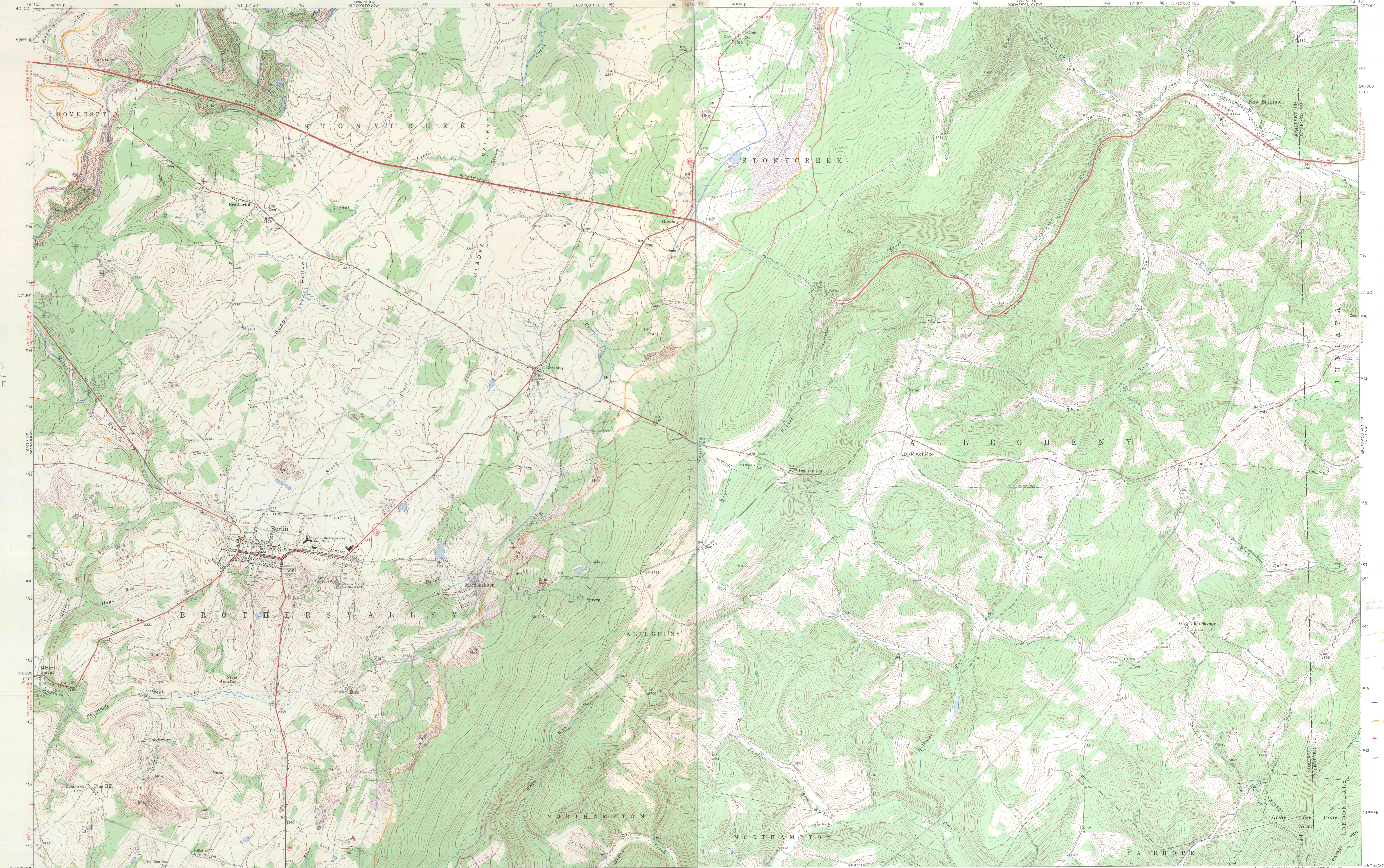


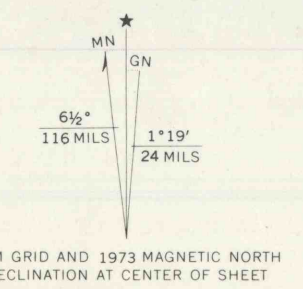
check prop on 64

TS  
TI

E (UF)  
C (UF)  
B (LF)  
Structures



Maped, edited, and published by the Geological Survey  
Control by USGS and USC&GS  
Topography by photogrammetric methods from aerial  
photographs taken 1966. Field checked 1967  
Polyconic projection. 1927 North American datum  
10,000-foot grid based on Pennsylvania coordinate system, south zone  
1000-meter Universal Transverse Mercator grid ticks,  
zone 17, shown in blue  
Fine red dashed lines indicate selected fence and field lines where  
generally visible on aerial photographs. This information is unchecked  
Revisions shown in purple compiled in cooperation with  
State of Pennsylvania agencies from aerial photographs  
taken 1973. This information not field checked

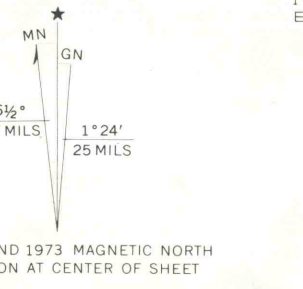


SCALE 1:24000  
CONTOUR INTERVAL 20 FEET  
DATUM IS MEAN SEA LEVEL

ROAD CLASSIFICATION  
Primary highway, all weather. Light-duty road, all weather.  
hard surface. Improved surface.  
Secondary highway, all weather. Unimproved road, fair or dry  
hard surface. weather.  
Interstate Route U.S. Route State Route

BERLIN, PA.  
N3952.5-W7852.577.5  
1967  
PHOTO REVISIONED 1973  
AMS 5263 IV NW-SERIES V81

Maped, edited, and published by the Geological Survey  
Control by USGS and USC&GS  
Topography by photogrammetric methods from aerial  
photographs taken 1966. Field checked 1967  
Polyconic projection. 1927 North American datum  
10,000-foot grid based on Pennsylvania coordinate system, south zone  
1000-meter Universal Transverse Mercator grid ticks,  
zone 17, shown in blue  
Fine red dashed lines indicate selected fence and field lines where  
generally visible on aerial photographs. This information is unchecked  
Revisions shown in purple compiled in cooperation with  
State of Pennsylvania agencies from aerial photographs  
taken 1973. This information not field checked



SCALE 1:24000  
CONTOUR INTERVAL 20 FEET  
DATUM IS MEAN SEA LEVEL

NEW BALTIMORE, PA.  
N3952.5-W7845.77.5  
1967  
PHOTO REVISIONED 1973  
AMS 5263 IV NE-SERIES V831

ROAD CLASSIFICATION  
Primary highway, all weather. Light-duty road, all weather.  
hard surface. Improved surface.  
Secondary highway, all weather. Unimproved road, fair or dry  
hard surface. weather.  
Interstate Route State Route