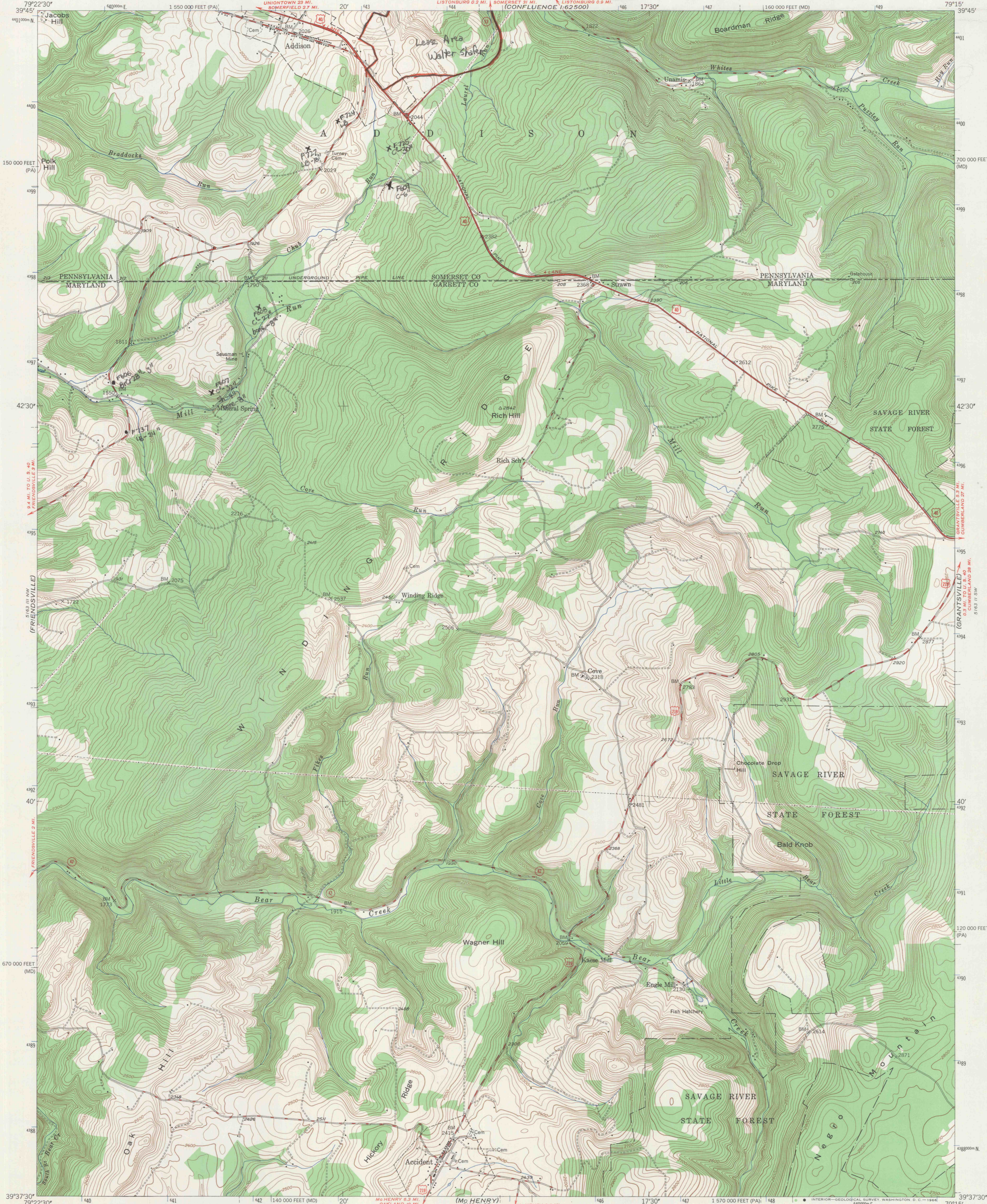
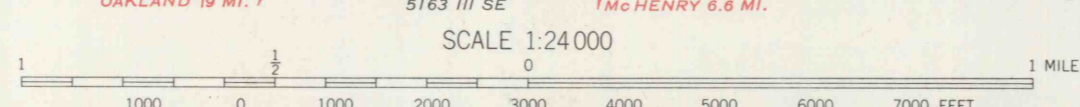
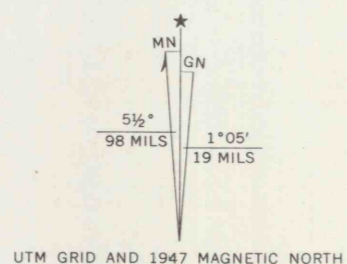


(CONFLUENCE)  
162550

(MEYERSDALE)  
162550



Mapped, edited, and published by the Geological Survey  
Control by USGS and USC&GS  
Topography from aerial photographs by multiplex methods  
Aerial photographs taken 1946. Field check 1947  
Polyconic projection. 1927 North American datum  
10 000 foot grids based on Maryland coordinate system  
and Pennsylvania coordinate system, south zone.  
1000-meter Universal Transverse Mercator grid ticks,  
zone 17, shown in blue



CONTOUR INTERVAL 20 FEET  
DATUM IS MEAN SEA LEVEL

THIS MAP COMPLIES WITH NATIONAL MAP ACCURACY STANDARDS  
FOR SALE BY U. S. GEOLOGICAL SURVEY, WASHINGTON, D. C. 20242  
A FOLDER DESCRIBING TOPOGRAPHIC MAPS AND SYMBOLS IS AVAILABLE ON REQUEST

ROAD CLASSIFICATION

HARD-SURFACE ALL WEATHER ROADS	DRY WEATHER ROADS
Heavy-duty, 4 LANE LANE	Improved dirt
Medium-duty, 4 LANE LANE	Unimproved dirt
Loose-surface, graded, or narrow hard-surface	
U. S. Route	State Route

gwin engineers, Inc.  
Allentown, Pennsylvania  
Date FEB 1973

ACCIDENT, MD.-PA.  
N3937.5-W7915.7.5  
PRINTED 1948  
AMS 5163 III NE-SERIES V833

(BTTINGER)  
5163 III SW  
67