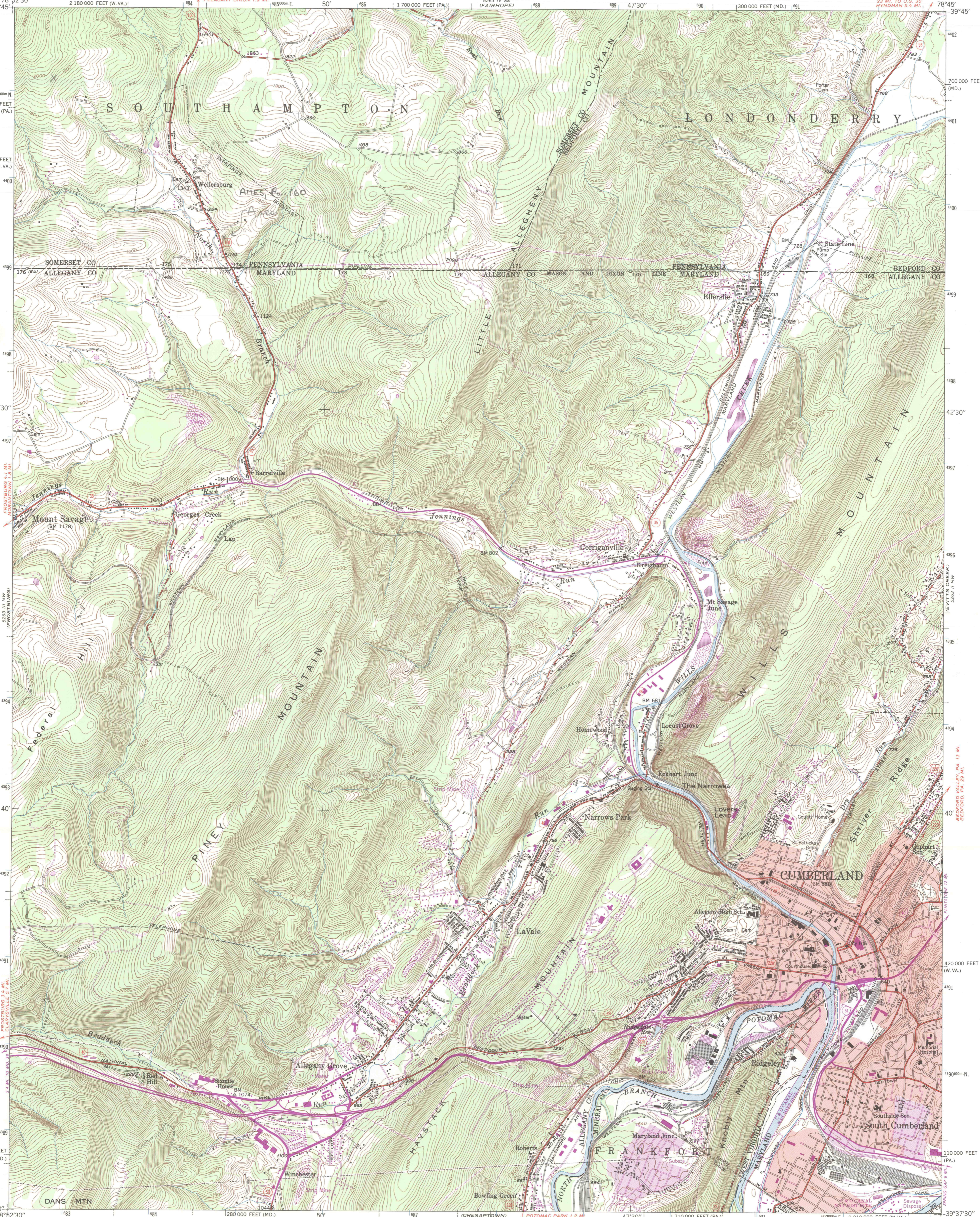


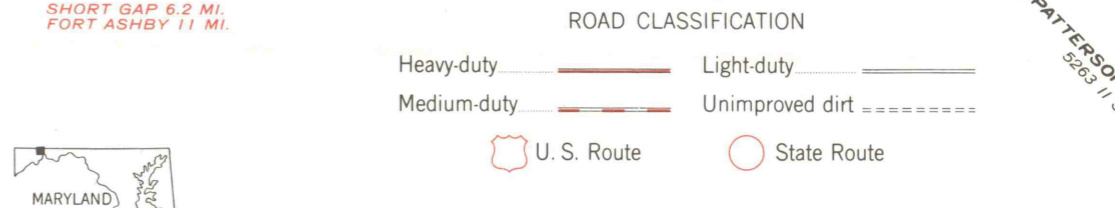
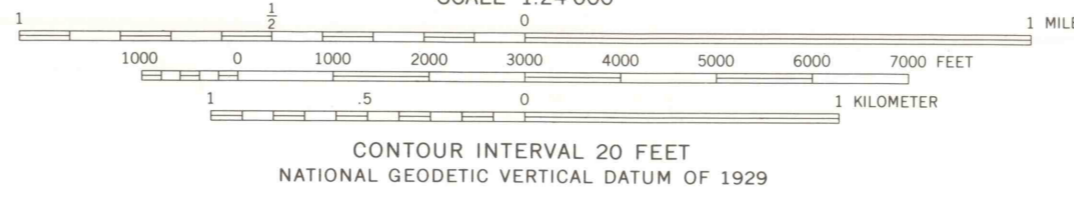
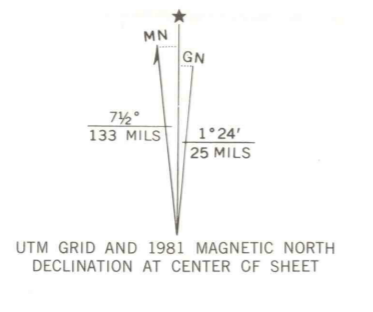
Area Lc  
39° 43' 34" N  
78° 50' 49" W

Area Lc  
39° 44' 34" N  
78° 52' 11" W  
EWING, GOMER



Mapped, edited, and published by the Geological Survey

Control by USGS and NOS/NOAA  
Topography by photogrammetric methods from aerial photographs taken 1947. Field checked 1949  
Polyconic projection. 10,000-foot grid ticks based on Maryland coordinate system, Pennsylvania coordinate system, south zone, and West Virginia coordinate system, north zone  
1000-meter Universal Transverse Mercator grid ticks, zone 17, shown in blue. 1927 North American Datum  
To place on the predicted North American Datum 1983 move the projection lines 6 meters south and 22 meters west as shown by dashed corner ticks  
Red tint indicates area in which only landmark buildings are shown  
There may be private inholdings within the boundaries of the National or State reservations shown on this map



CUMBERLAND, MD.-PA.-W.VA.  
NE/4 FROSTBURG 15' QUADRANGLE  
39078-F7-TF-024  
1949  
PHOTOREVISED 1981  
DMA 5263 III NE-SERIES V833

THIS MAP COMPLIES WITH NATIONAL MAP ACCURACY STANDARDS  
FOR SALE BY U.S. GEOLOGICAL SURVEY, DENVER, COLORADO 80225  
OR RESTON, VIRGINIA 22092  
A FOLDER DESCRIBING TOPOGRAPHIC MAPS AND SYMBOLS IS AVAILABLE ON REQUEST

Revisions shown in purple compiled in cooperation with Commonwealth of Pennsylvania agencies from aerial photographs taken 1977 and other sources. This information not field checked. Map edited 1981  
Purple tint indicates extension of urban areas